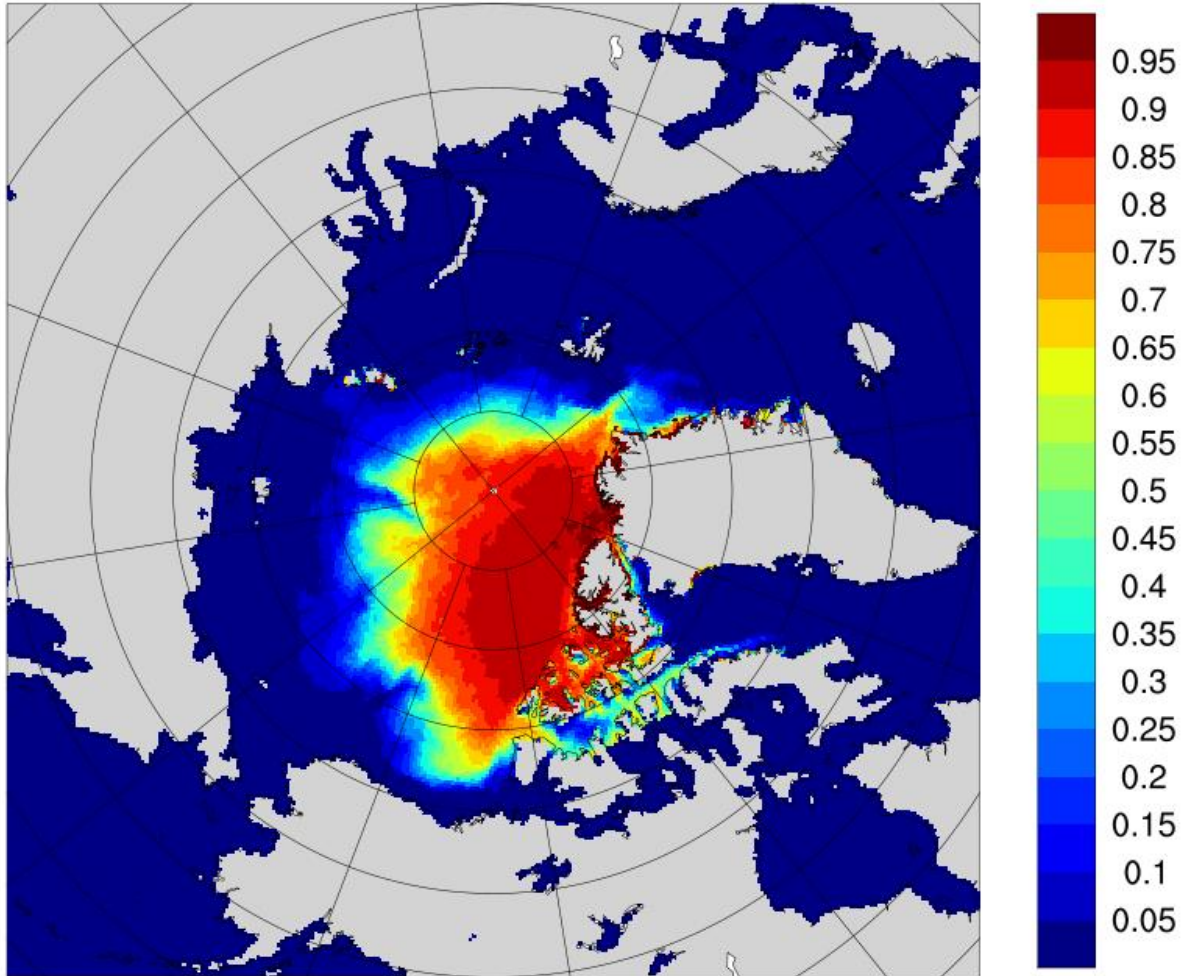
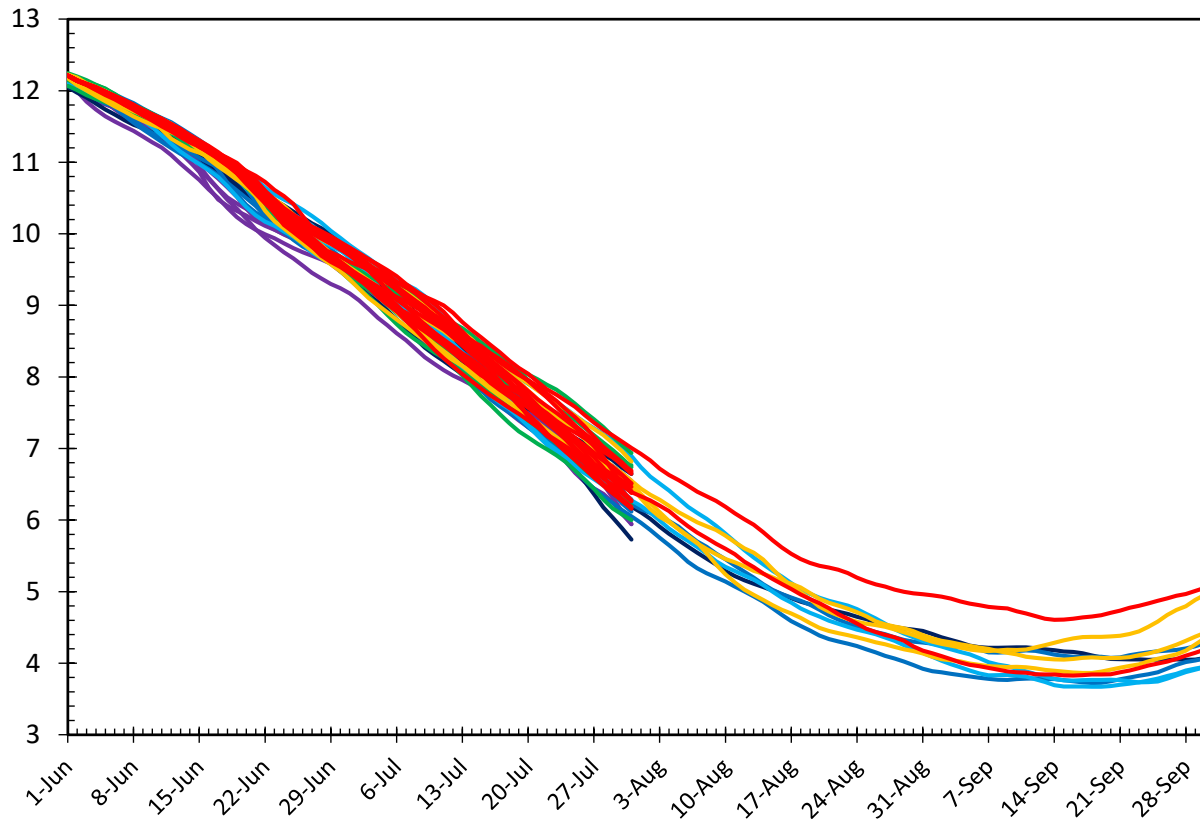


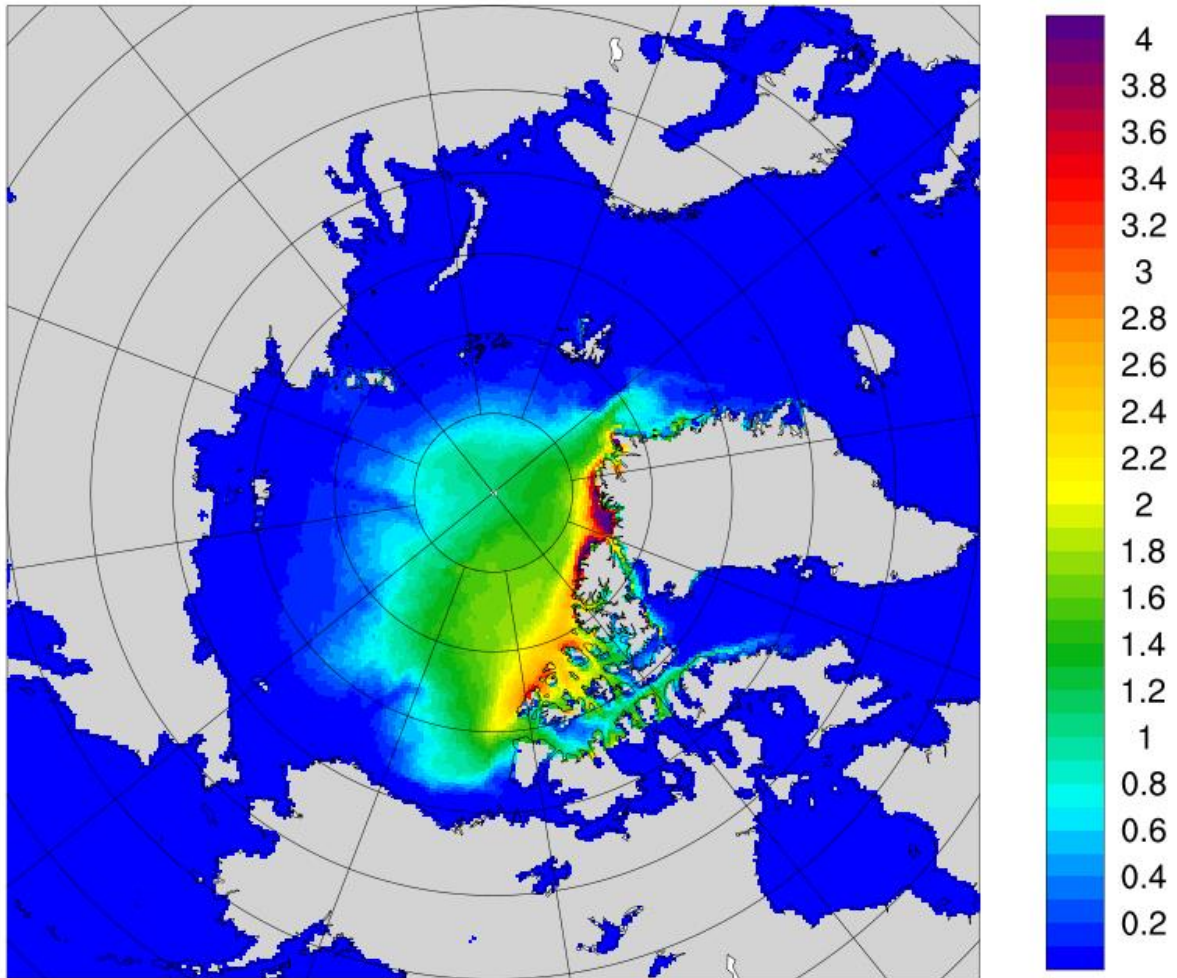
Ensemble-average forecast sea ice concentration for September.



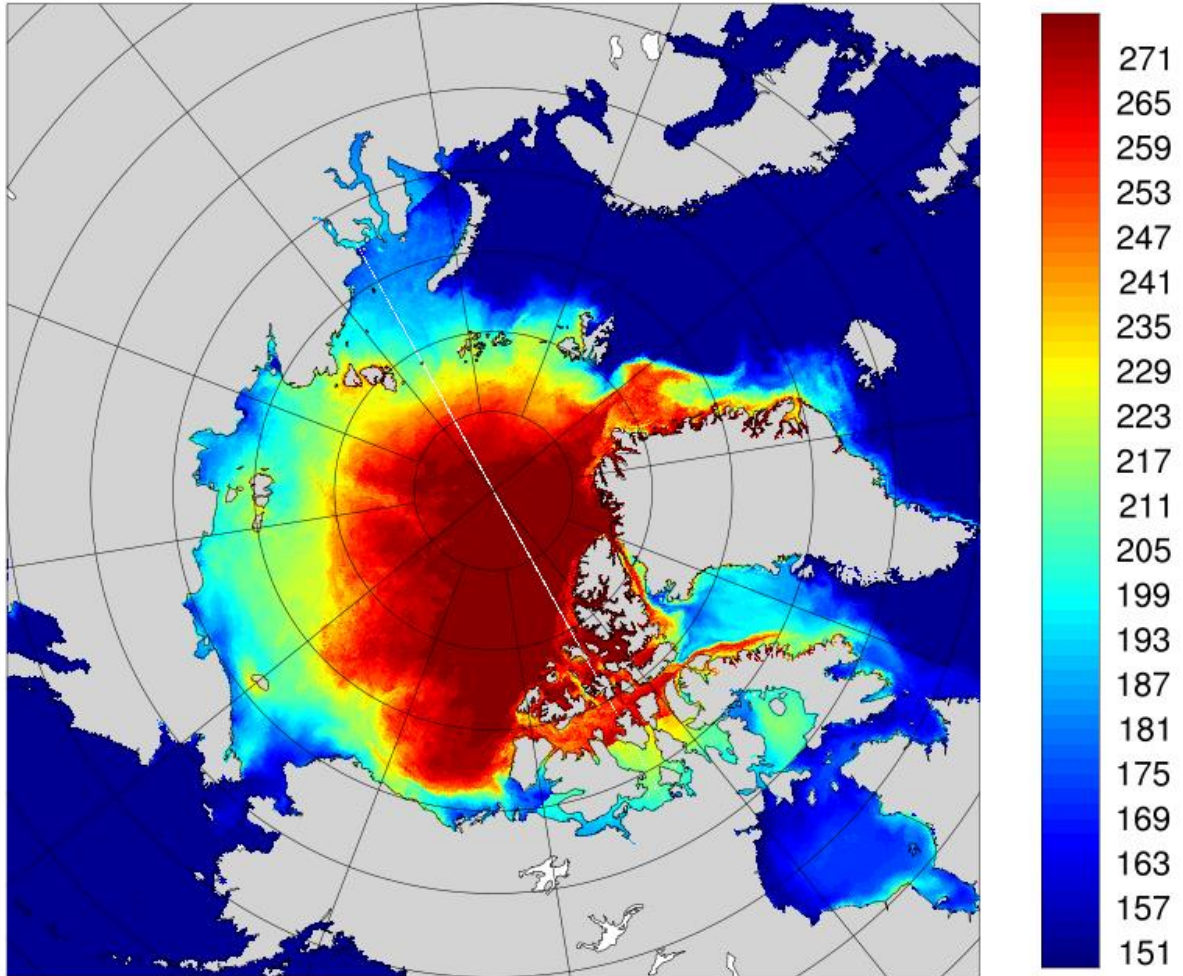
GEOS-S2S Northern Hemisphere Sea Ice Extent Forecast (10⁶ km²)



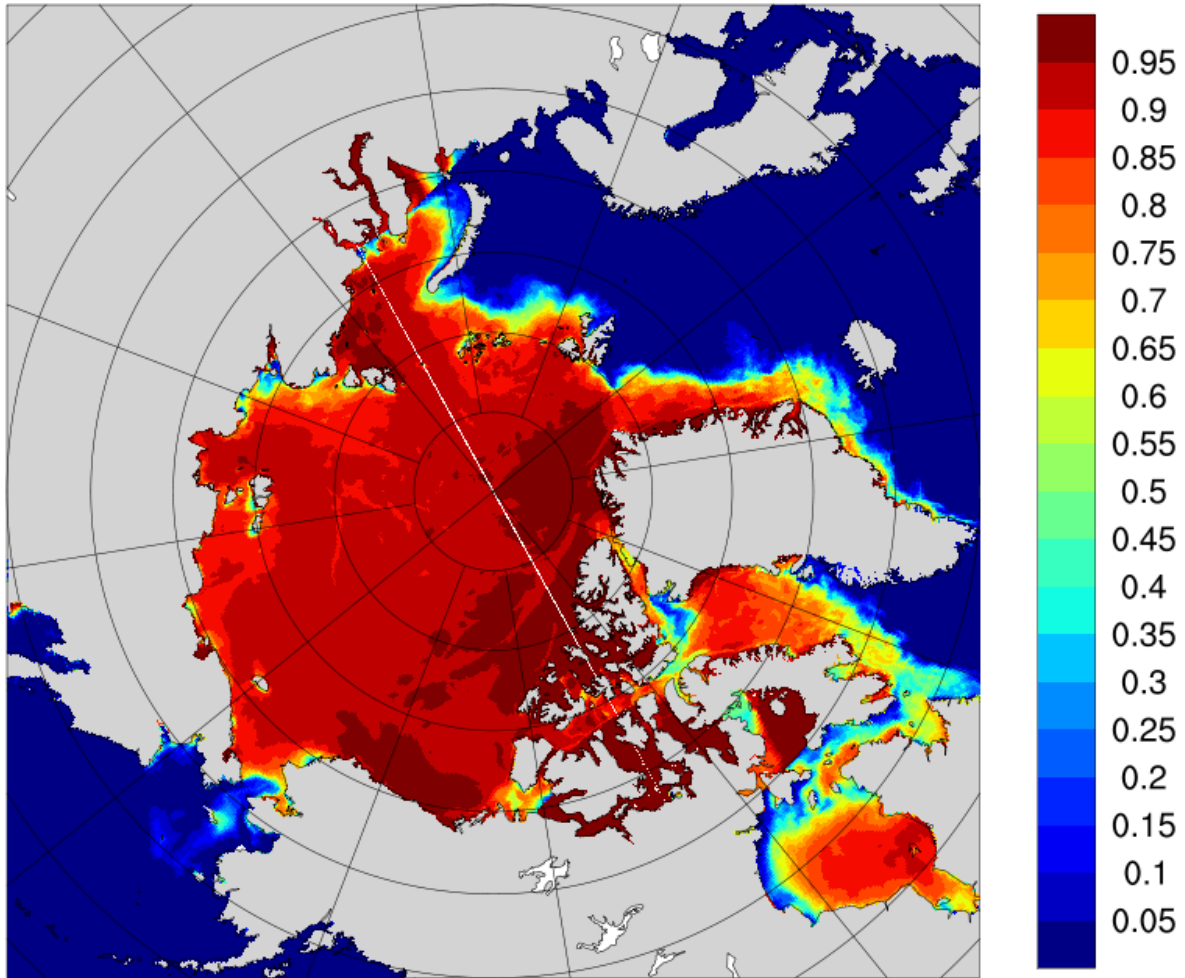
Ensemble-average forecast sea ice thickness for September (m).



Ensemble-average forecast ice-free day of year.



Forecast initial ice concentration for 01-June.



Forecast initial ice thickness for 01-June (m).

