

Figure 1. Spatial pattern of the predicted SIC of September.

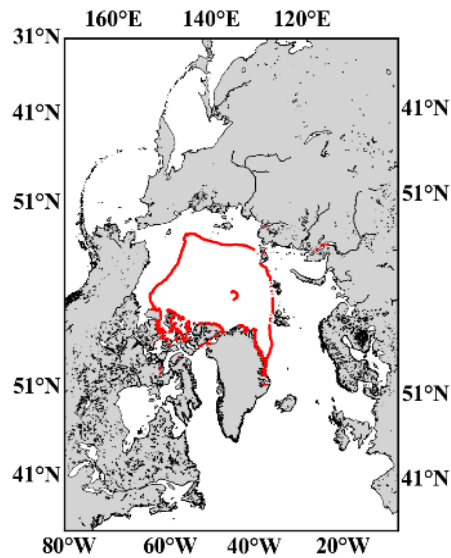


Figure 2. Spatial pattern of the predicted SIE(SIC>0.15) of September.

Reference:

- [1] Ren Y, Li X. Predicting the Daily Sea Ice Concentration on a Sub-Seasonal Scale of the Pan-Arctic During the Melting Season by a Deep Learning Model[J]. IEEE Transactions on Geoscience and Remote Sensing, 2023.
- [2] Ren Y, Li X, Zhang W. A data-driven deep learning model for weekly sea ice concentration prediction of the Pan-Arctic during the melting season[J]. IEEE Transactions on Geoscience and Remote Sensing, 2022, 60: 1-19.