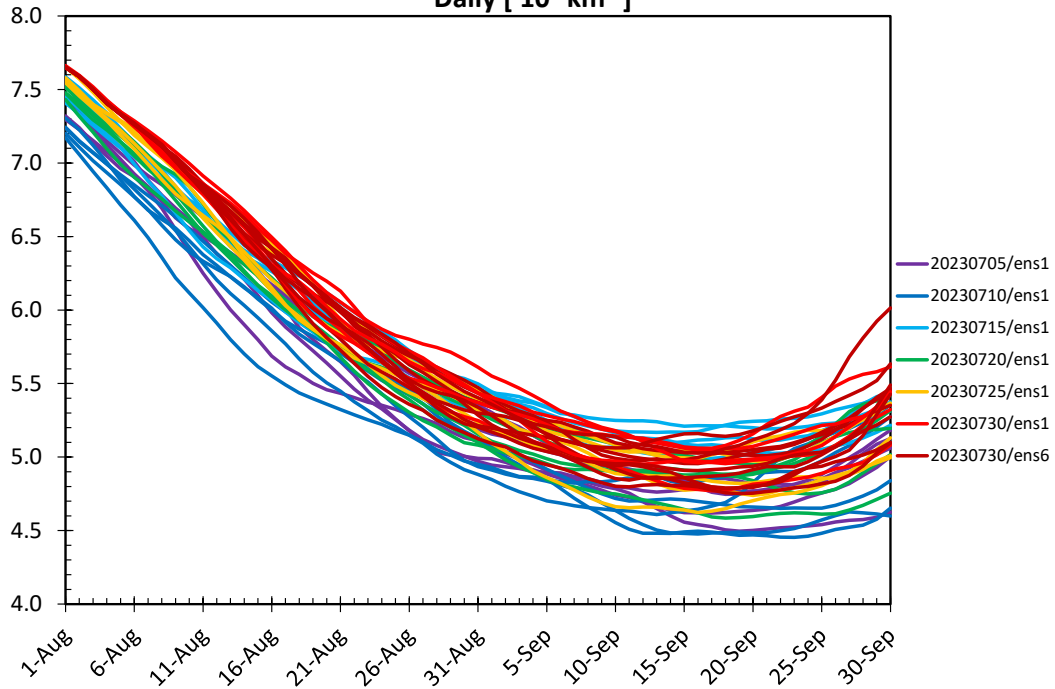
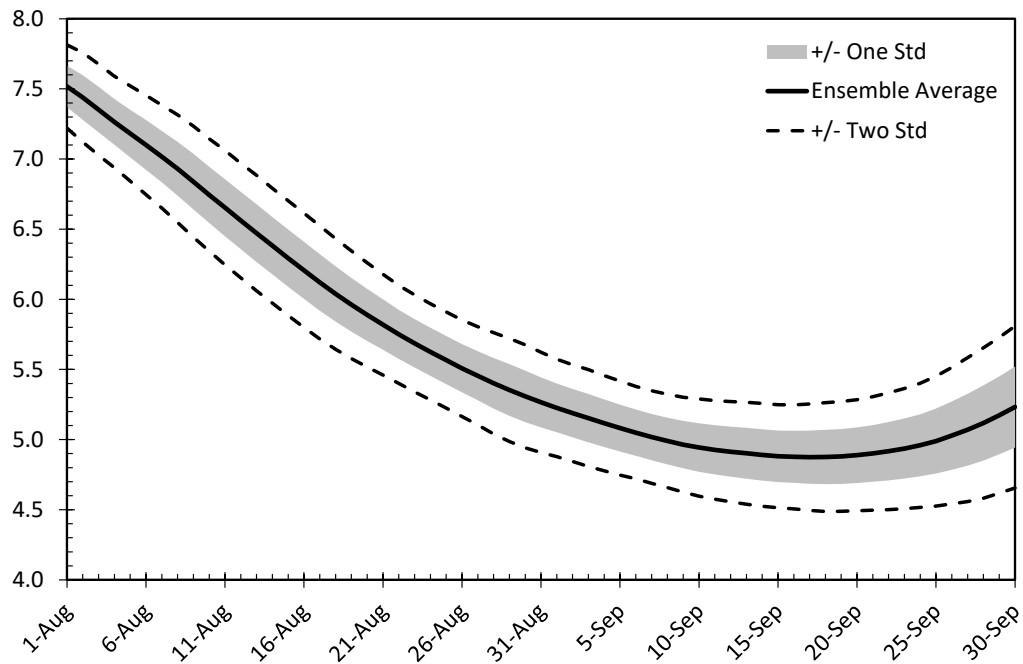


Time series: daily Northern Hemisphere forecast sea ice extent.

**Native Grid S2SV3 Forecast Northern Hemisphere Sea Ice Extent,
Daily [10⁶ km²]**

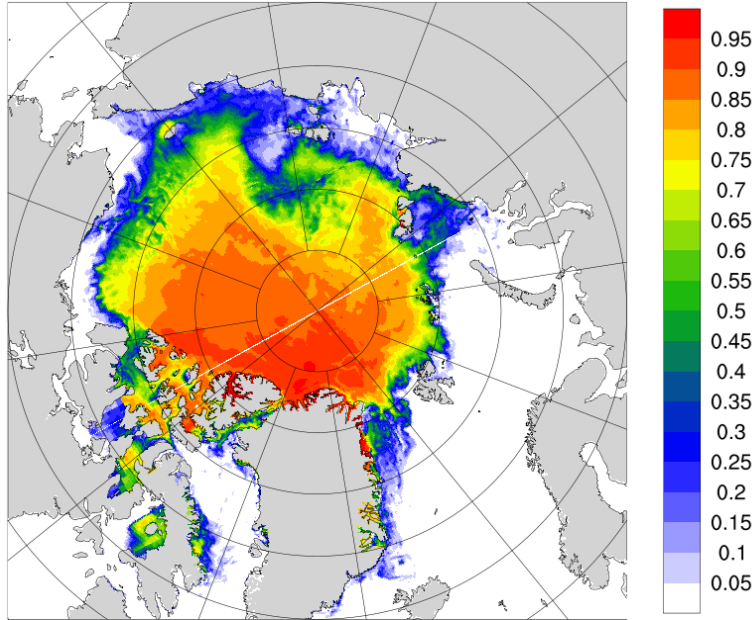


**Native Grid S2SV3 Forecast Northern Hemisphere Sea Ice Extent,
Daily [10⁶ km²]**

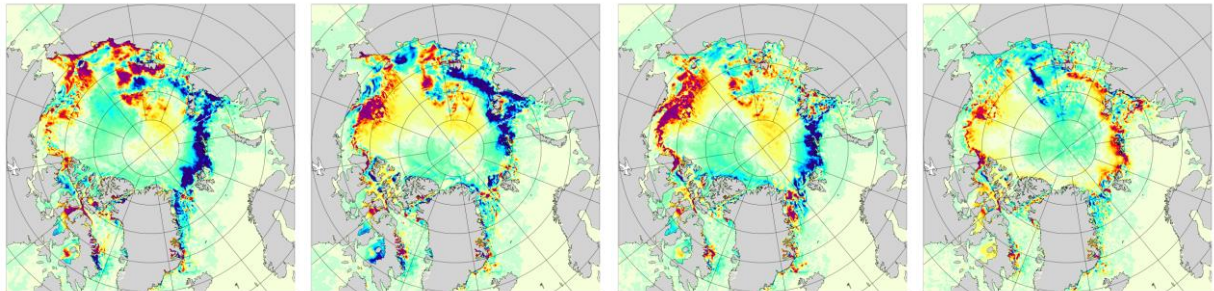


Initialization - 1-August conditions

1-August Ice Concentration Average



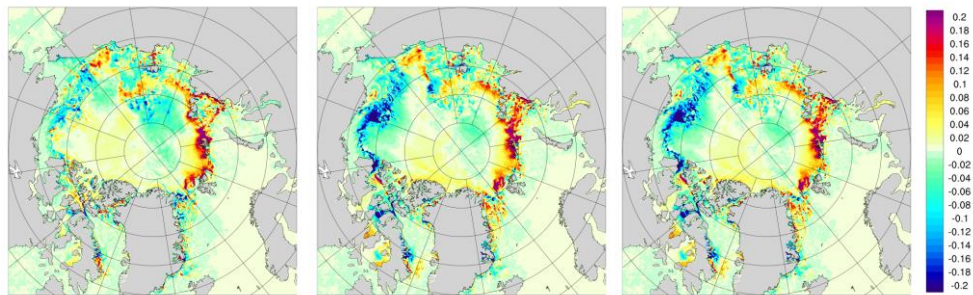
Average 5-July Init Minus Ensemble Average



25-July

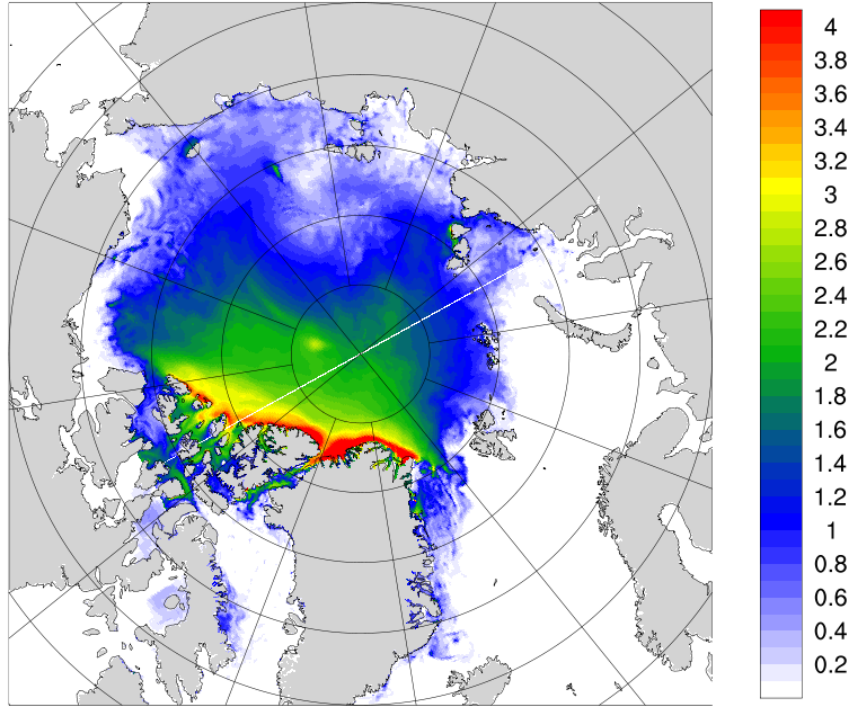
30-July Ens 1-5

30-July Ens 6-15

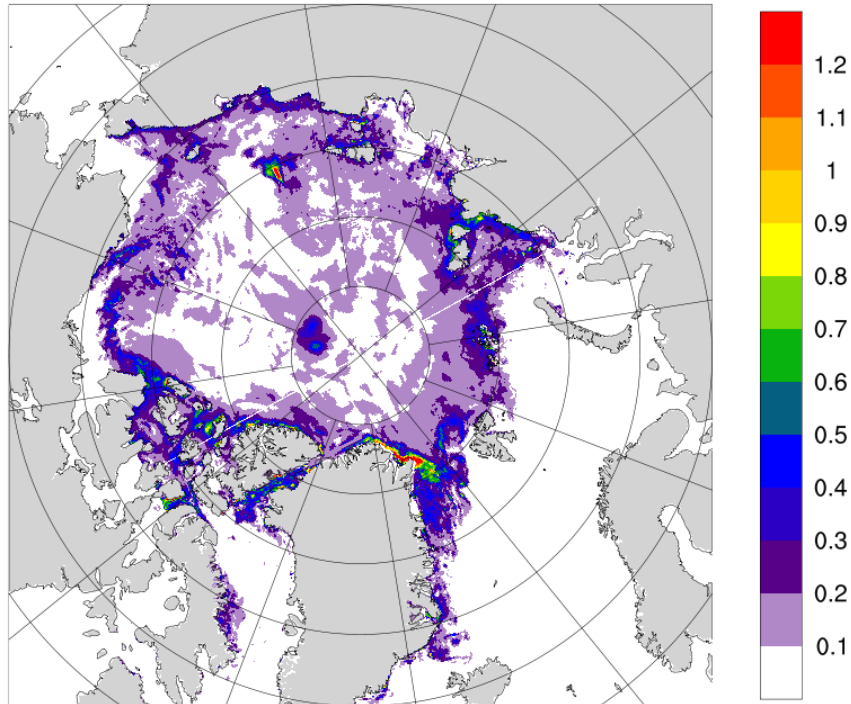


Initialization - 1-August conditions

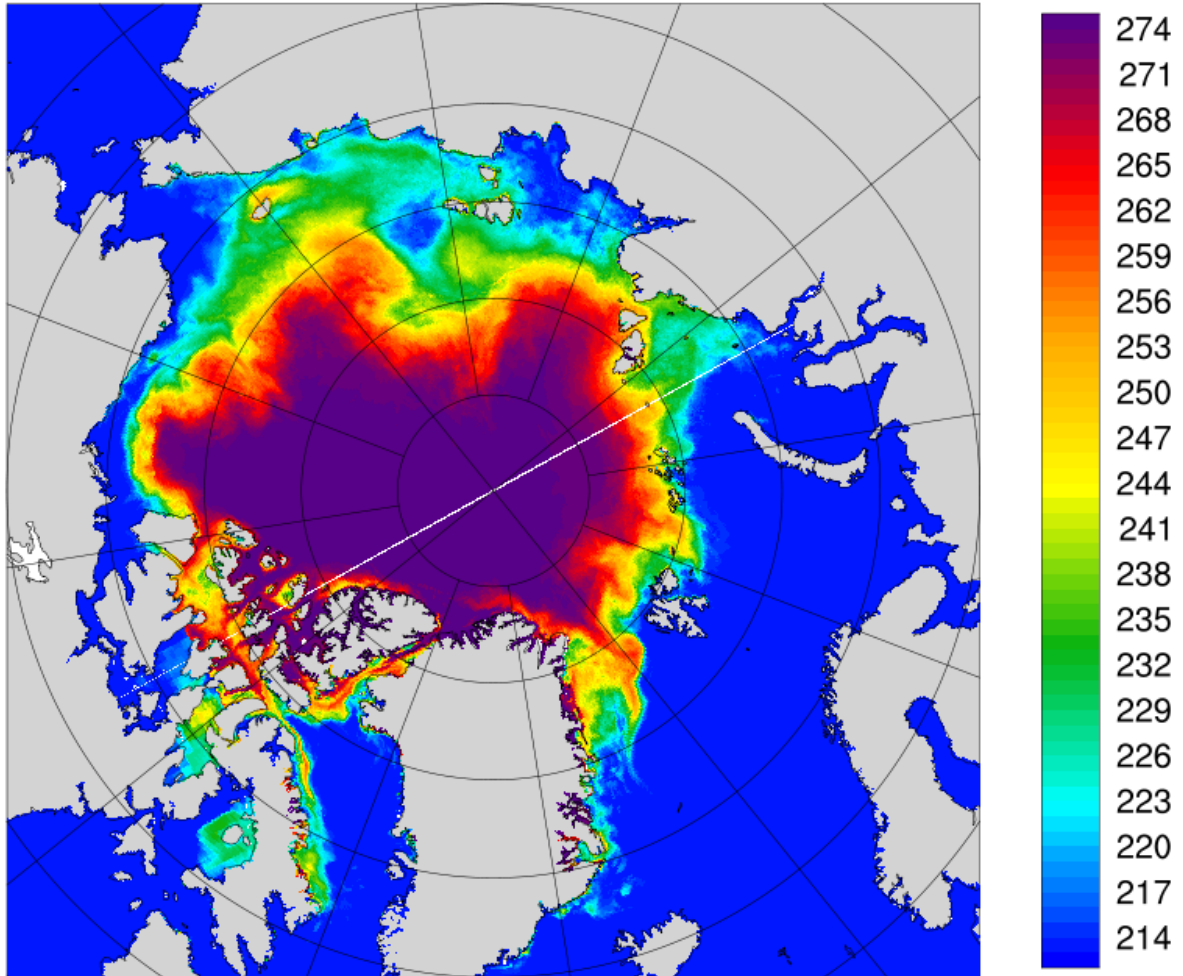
1-August Ice Thickness Ensemble Average



1-August Ice Thickness Ensemble Standard Deviation

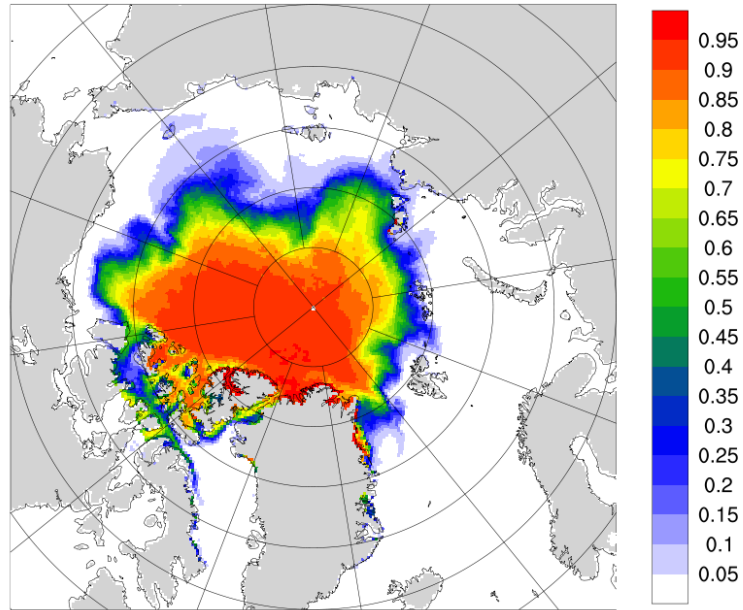


Forecast period - Ice-Free Day



Forecast period - September 2023

Ensemble September Forecast Ice Concentration Average

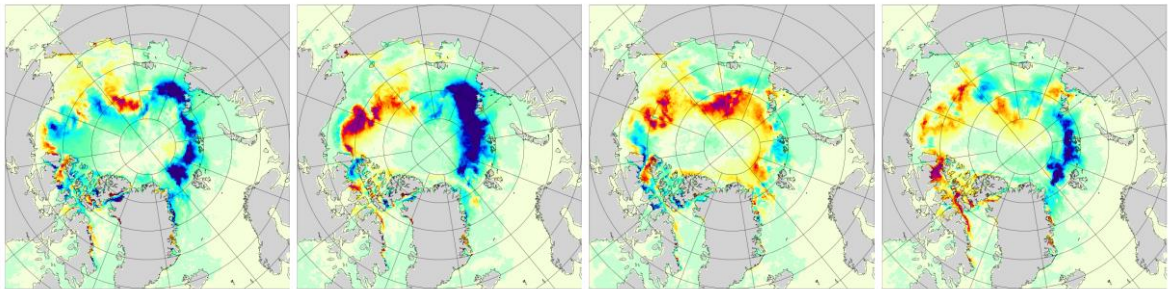


Average 5-July Init Minus
Ensemble Average

10-July

15-July

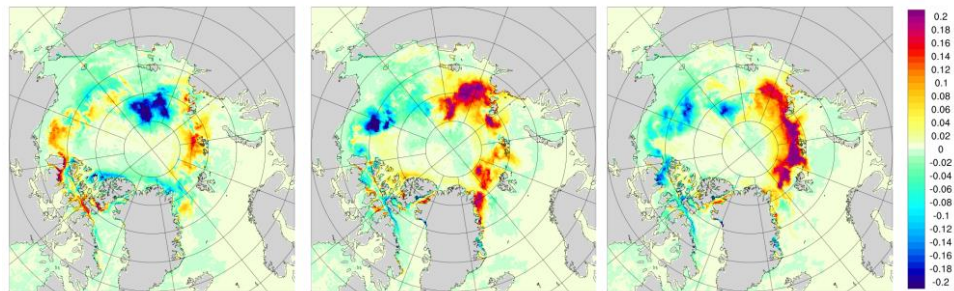
20-July



25-July

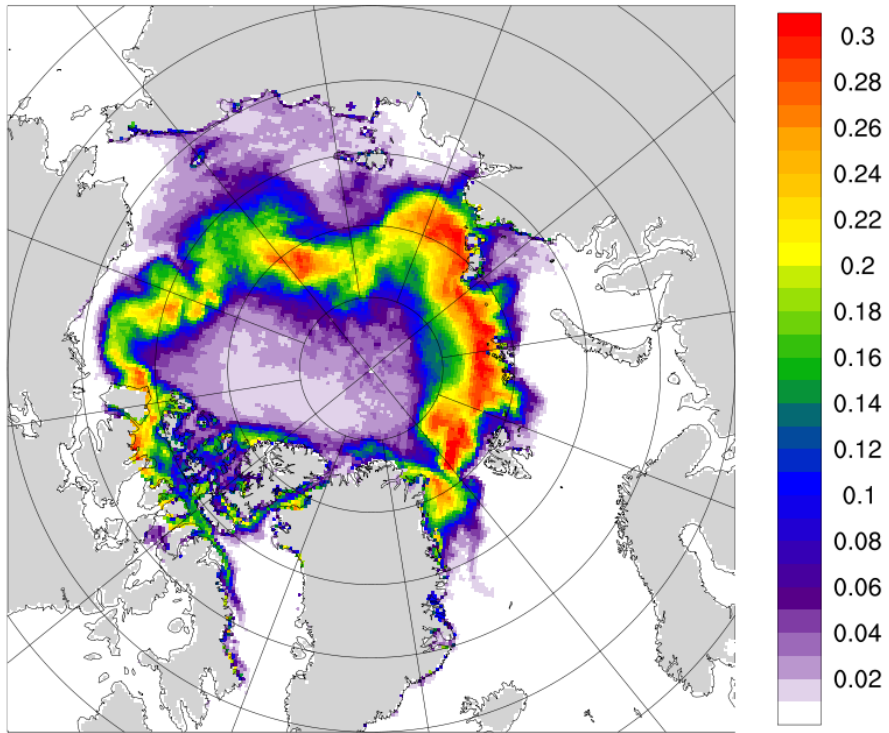
30-July Ens 1-5

30-July Ens 6-15



Forecast period - September 2023

Ensemble September Forecast Ice Concentration Std Dev



Ensemble September Forecast Ice Extent Std Dev

