

RASM Ensemble Members: Daily Ice Extent (1st August-initialized)

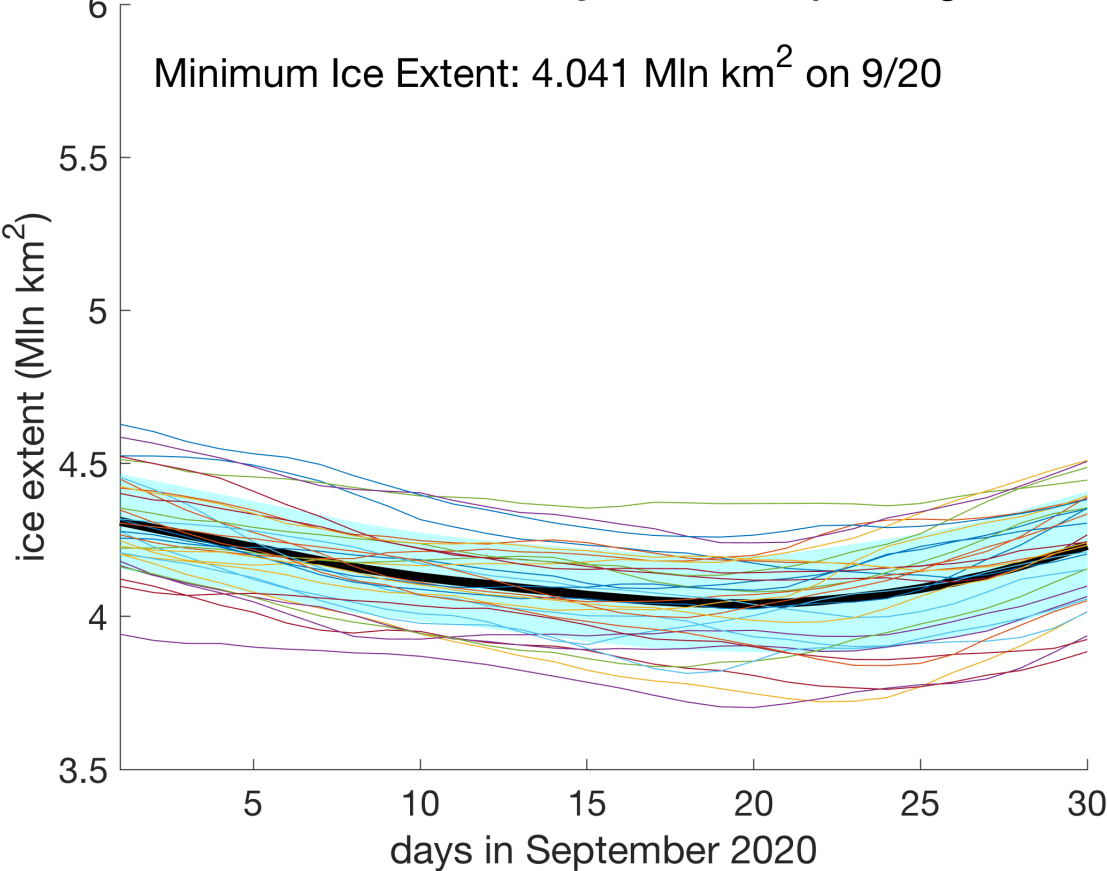


Figure 1. RASM August-initialized ensemble forecast of pan-Arctic sea ice extent for the September 2020 Sea Ice Outlook in contribution to the Sea Ice Prediction Network. The thick black line is the daily ensemble mean sea ice extent for September 2020, color lines are for 31 individual ensemble members and the blue shading represents ± 1 standard deviation from the ensemble mean.