

# Sea Ice Outlook 2016 based on AMSR2 ice extent

Lars Kaleschke

Institute for Oceanography, University of Hamburg, [lars.kaleschke@uni-hamburg.de](mailto:lars.kaleschke@uni-hamburg.de)

August 9, 2016

## Executive summary

I provide a simple statistical estimate for the September sea ice extent based on the total sea ice extent measured on August:  $4.4 \pm 0.4$ .

For updates follow me on Twitter @seaice\_de.

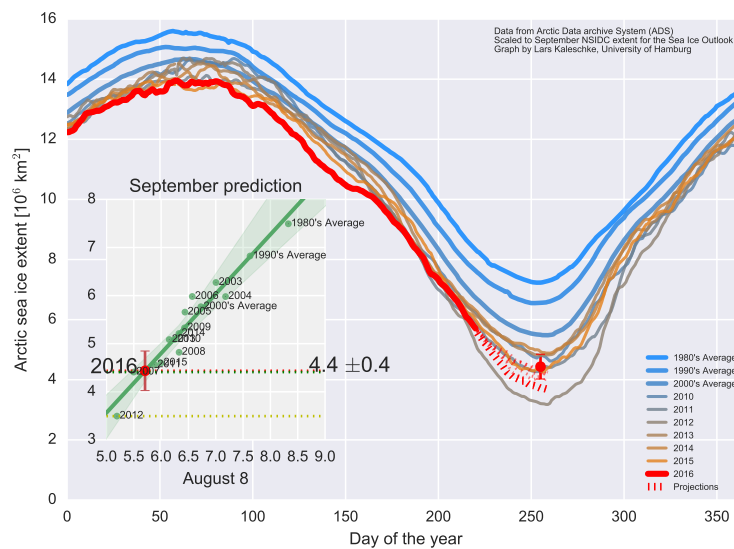
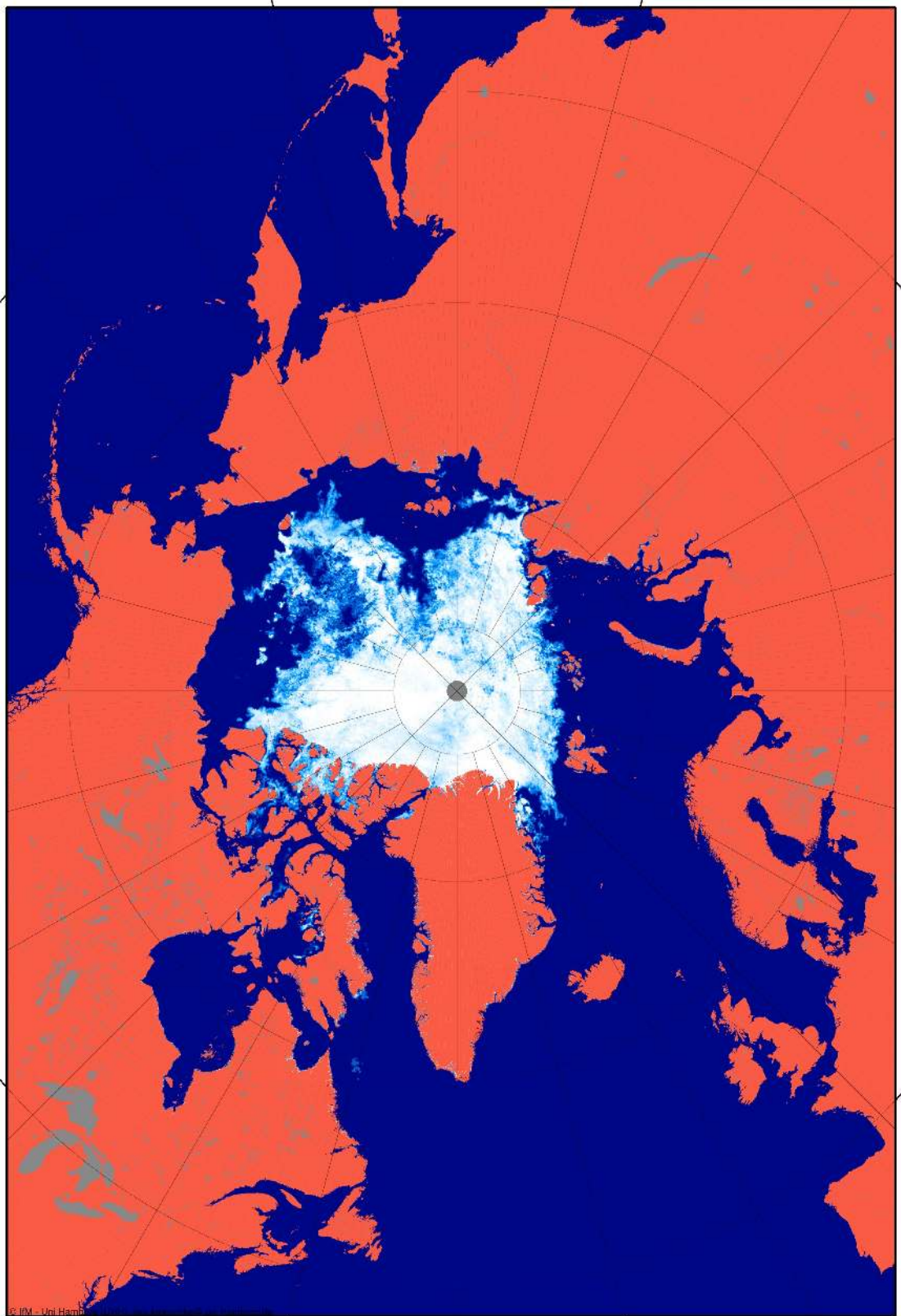


Figure 1: Sea ice extent from ADS, projections based on past declines, and statistical regression based on August 8 (x-axis) and Sept (y-axis) scaled to NSIDC monthly values. Uncertainties of the statistical regression are given with  $5\sigma$  intervalls.



Sea ice concentration 2016-08-08  
AS1v6 (AMSR2/UHH-processing), AMSR2 L1R data (JAXA)  
Grid: 3 125 km

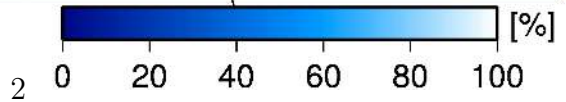


Figure 2: Sea ice concentration from AMSR2 on 8 August 2016.