

# September 2013 Regional Outlook

## Adrienne Tivy

June Report based on January Data

**JULY UPDATE: NO CHANGE**

### SHIPPING ROUTE: Arctic Bridge & Hudson Bay

Sea Ice Parameter: July sea ice concentration anomalies

Methods/Techniques: Canonical correlation analysis with three predictors: 1. North Atlantic Fall SST, 2. Northern hemisphere Fall z500 and 3. Regional (Hudson Bay) Fall SAT. For more information please see: Tivy, A., S. E.L. Howell, B. Alt, J. Yackel and T. Carrieres (2011). *Origins and levels of seasonal forecast skill for sea ice in Hudson Bay using Canonical Correlation Analysis. Journal of Climate. doi:10.1175/2010JCLI3527.1*

Estimate of Forecast Skill: The hind-cast skill of the model is used as an estimate of forecast skill. It is evaluated as the number of times the model correctly categorized ice concentration anomalies at each grid point as above normal, near normal or above normal.

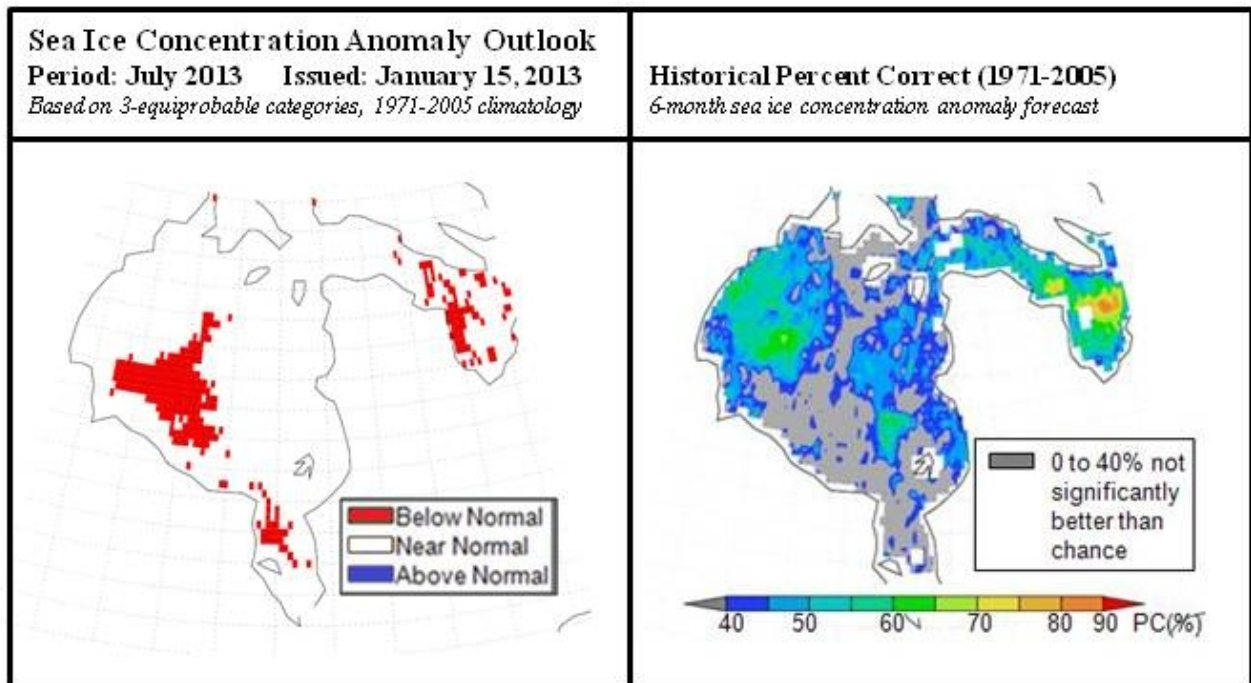


Figure 1. Sea ice concentration anomaly outlook for July 2013.