

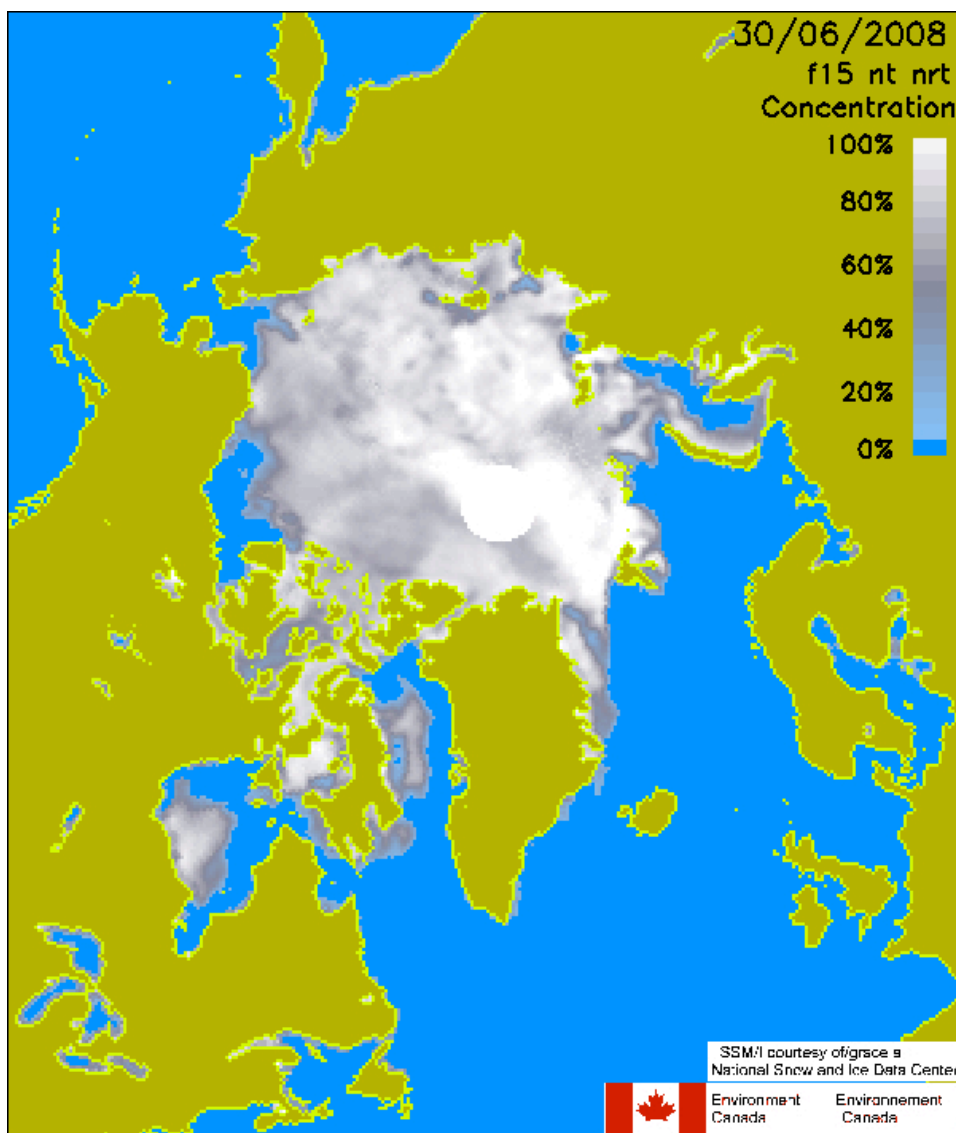
#1—Tom Agnew

1. Names of Scientist(s) making the Outlook.

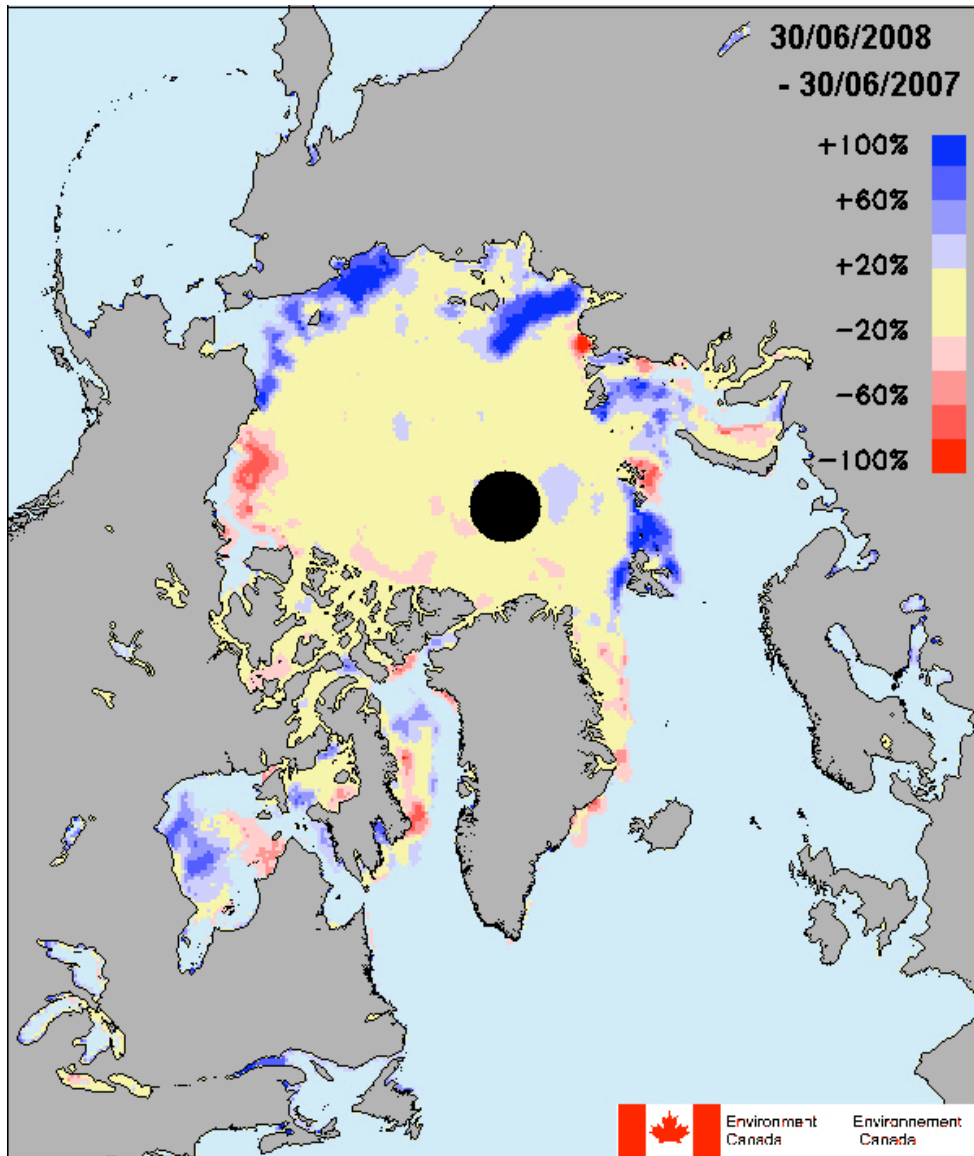
Tom Agnew

2. Estimate of sea ice extent for the month of September 2008 (the value for September 2007 was 4.3 million square kilometers).

I tend to agree with Cecilia Bitz and the other more conservative opinions. The high pressure which sat over the Beaufort and Chukchi Sea last summer was the major reason for the large region of open water in the Siberian, Chukchi and Beaufort Seas in the summer of 2007. The chance that this will happen again this summer is unlikely. The most recent ice cover shows these regions still ice covered (Fig 1) unlike last year. Fig 2 is the difference between this year and last year. Blue regions mean there is more ice this year than last year at this time. There is no indication that the Siberian or Chukchi seas have opened up as they did last summer.



(Figure 1)



(Figure 2)

3. Principal Method (numerical model, statistical model, comparison to 2007 weather and satellite data, etc.) Keep this short as it will go into a table.

Comparison to 2007

4. A short several sentence summary of your primary physical reasoning behind the estimate provided in #2.

Not provided.

5. Any expanded information with figures which backs up #4.

None provided.

6. Any information on regional sea ice conditions or outlooks.

None provided.