

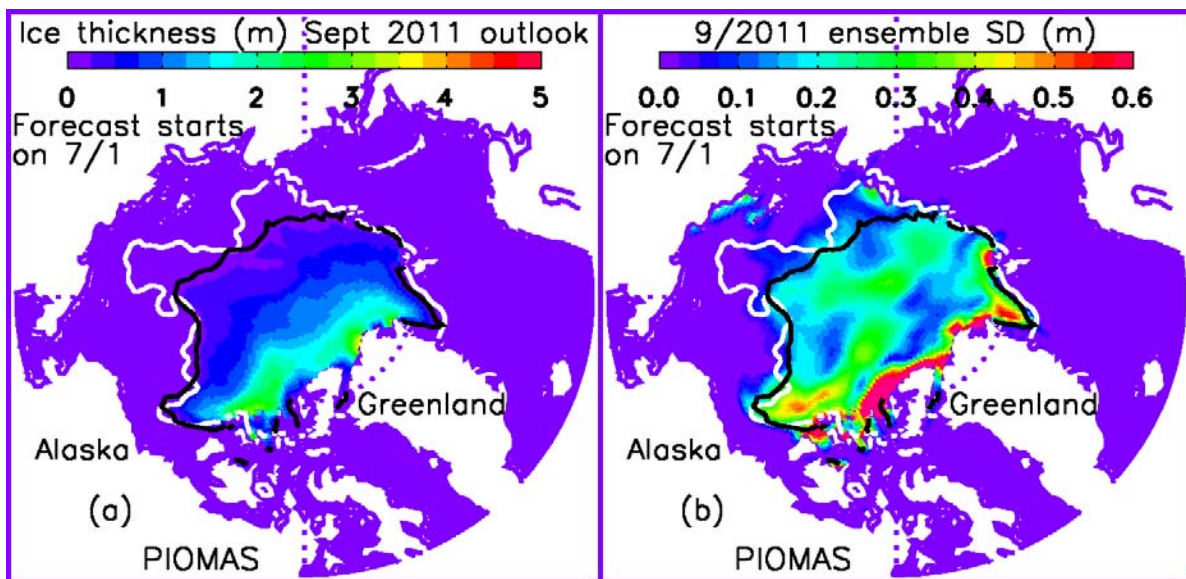
## Pan-arctic outlook of 9/2011 sea ice from 7/1/2011

Jinlun Zhang

Polar Science Center, Applied Physics Lab, University of Washington

**Pan-arctic outlook:** The predicted September 2011 ice extent is **4.3 +/- 0.5 million square kilometers**. This is based on numerical ensemble predictions starting on 7/1/2011 using the Pan-arctic Ice-Ocean Modeling and Assimilation System (PIOMAS). The ensemble consists of seven members each of which uses a unique set of NCEP/NCAR atmospheric forcing fields from recent years, representing recent climate, such that ensemble member 1 uses 2004 NCEP/NCAR forcing, member 2 uses 2005 forcing ..., and member 7 uses 2010 forcing. Each ensemble prediction starts with the same initial ice-ocean conditions on 7/1/2011. The initial ice-ocean conditions are obtained by a retrospective simulation that assimilates satellite ice concentration data and sea surface temperature. No data assimilation is performed during the predictions. More details about the prediction procedure can be found in Zhang et al. (2008)

[http://psc.apl.washington.edu/zhang/Pubs/Zhang\\_etal2008GL033244.pdf](http://psc.apl.washington.edu/zhang/Pubs/Zhang_etal2008GL033244.pdf). Additional information can be found in [http://psc.apl.washington.edu/zhang/IDAO/seasonal\\_outlook.html](http://psc.apl.washington.edu/zhang/IDAO/seasonal_outlook.html).



**Figure 1.** (a) Ensemble prediction of September 2011 sea ice thickness and (b) ensemble standard deviation (SD) of ice thickness which shows the uncertainty of the prediction. The white line represents satellite observed September 2010 ice edge defined as of 0.15 ice concentration, while the black line model predicted September 2011 ice edge.