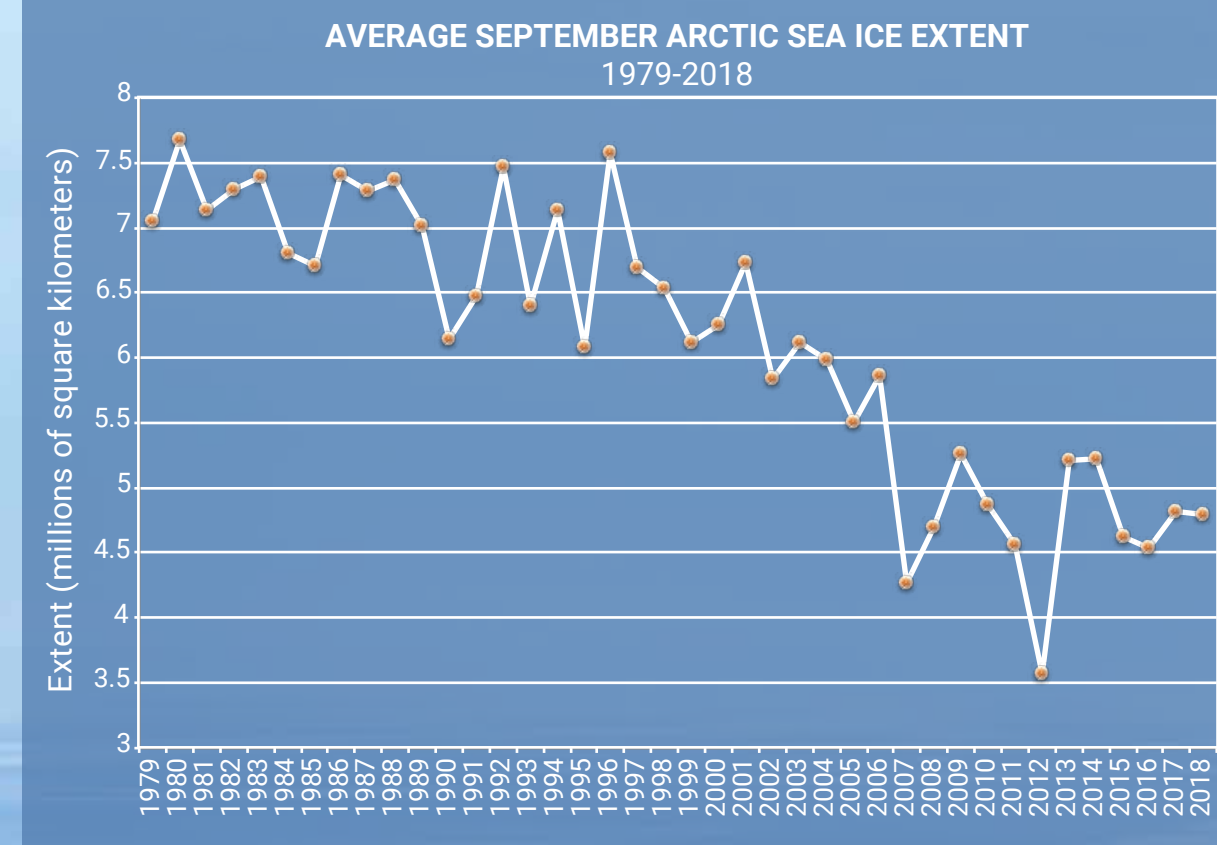
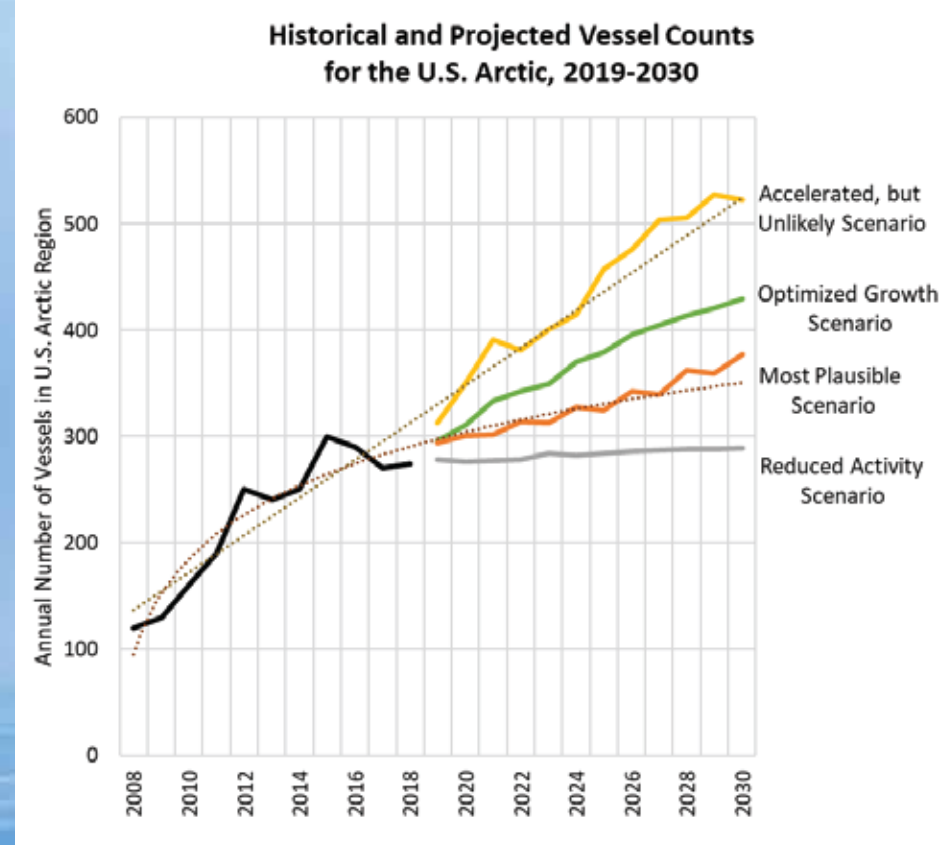


NOW IS THE TIME

to advance a network of safety measures for

VESSEL TRAFFIC IN ALASKAN WATERS



https://www.cmts.gov/downloads/2019_ArcticVesselProjections_draft.pdf

Fitzner, F., K. Knowles, W. N. Meier, M. Savoie, and A. K. Windnagel. 2017, updated daily. Sea30.7265 Ice Index, Version 3. Monthly sea ice extent data. Boulder, Colorado USA: NSIDC: National Snow and Ice Data Center. doi: <https://doi.org/10.7927/H4T3-6Q93> [Accessed Aug 28, 2019].

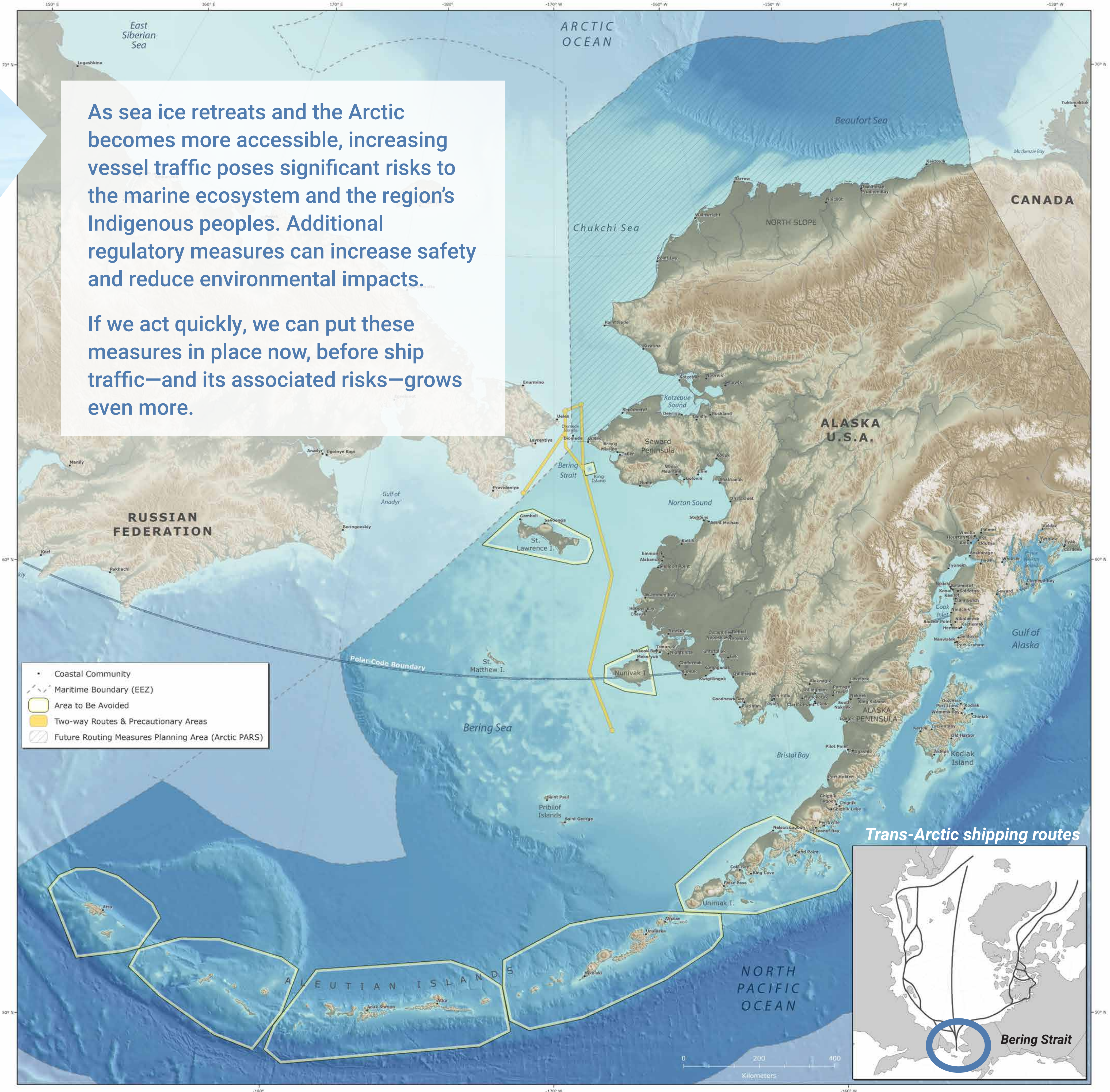


A Vision for Safe Arctic Shipping Includes:

- **ADOPTING A COMPREHENSIVE GOVERNANCE STRUCTURE WITH A MEANINGFUL ROLE FOR TRIBES IN DECISION-MAKING;**
- **IMPLEMENTING ROUTING MEASURES LIKE TRAFFIC LANES AND AREAS TO BE AVOIDED;**
- **BROADENING THE POLAR CODE TO COVER ADDITIONAL VESSELS;**
- **UPDATING NAVIGATIONAL CHARTS;**
- **SUPPLEMENTING VESSEL TRAFFIC MONITORING SYSTEMS;**
- **BANNING HEAVY FUEL OIL IN THE ARCTIC;**
- **IMPROVING THE SAFETY OF LIGHTERING OPERATIONS;**
- **BOLSTERING COMMUNITY SPILL RESPONSE EQUIPMENT AND TRAINING;**
- **REGULATING DISCHARGE OF GRAYWATER;**
- **ESTABLISHING NO-DISCHARGE ZONES;**
- **REDUCING UNDERWATER NOISE FROM SHIPS; AND**
- **REDUCING OR ELIMINATING GREENHOUSE GAS EMISSIONS FROM THE SHIPPING SECTOR.**

As sea ice retreats and the Arctic becomes more accessible, increasing vessel traffic poses significant risks to the marine ecosystem and the region's Indigenous peoples. Additional regulatory measures can increase safety and reduce environmental impacts.

If we act quickly, we can put these measures in place now, before ship traffic—and its associated risks—grows even more.



Vessel traffic measures adopted by the International Maritime Organization

Data sources for maps:
 - ATBA and routing measures: https://www.marine.uscg.gov/pdf/IMO/NCSR_S_3_7.pdf; <http://www.imo.org/en/About/Press/Pages/PressReleases/NCSR/NCSR.aspx>
 - Maritime boundaries: https://www.marine.uscg.gov/pdf/IMO/NCSR_S_3_7.pdf; https://www.marine.uscg.gov/pdf/IMO/NCSR_S_3_7.pdf
 - Major Arctic Shipping Routes: modified from the Arctic Marine Shipping Assessment 2009 Report. Arctic Council, April 2009, second printing.
 - Basemap data: ESRI, Natural Earth, GEBCO, 2014

SAFER SHIPPING: VOTE FOR YOUR TOP THREE !

Take 3 dots & place your votes.

- Adopting a comprehensive governance structure with a meaningful role for Tribes in decision-making;

- Implementing routing measures like traffic lanes and Areas to be Avoided;

- Broadening the Polar Code to cover additional vessels;

- Updating navigational charts;

- Supplementing vessel traffic monitoring systems;

- Banning heavy fuel oil in the Arctic;

- Improving the safety of lightering operations;

- Bolstering community spill response equipment and training;

- Regulating discharge of graywater;

- Establishing no-discharge zones;

- Reducing underwater noise from ships; and

- Reducing or eliminating greenhouse gas emissions from the shipping sector.