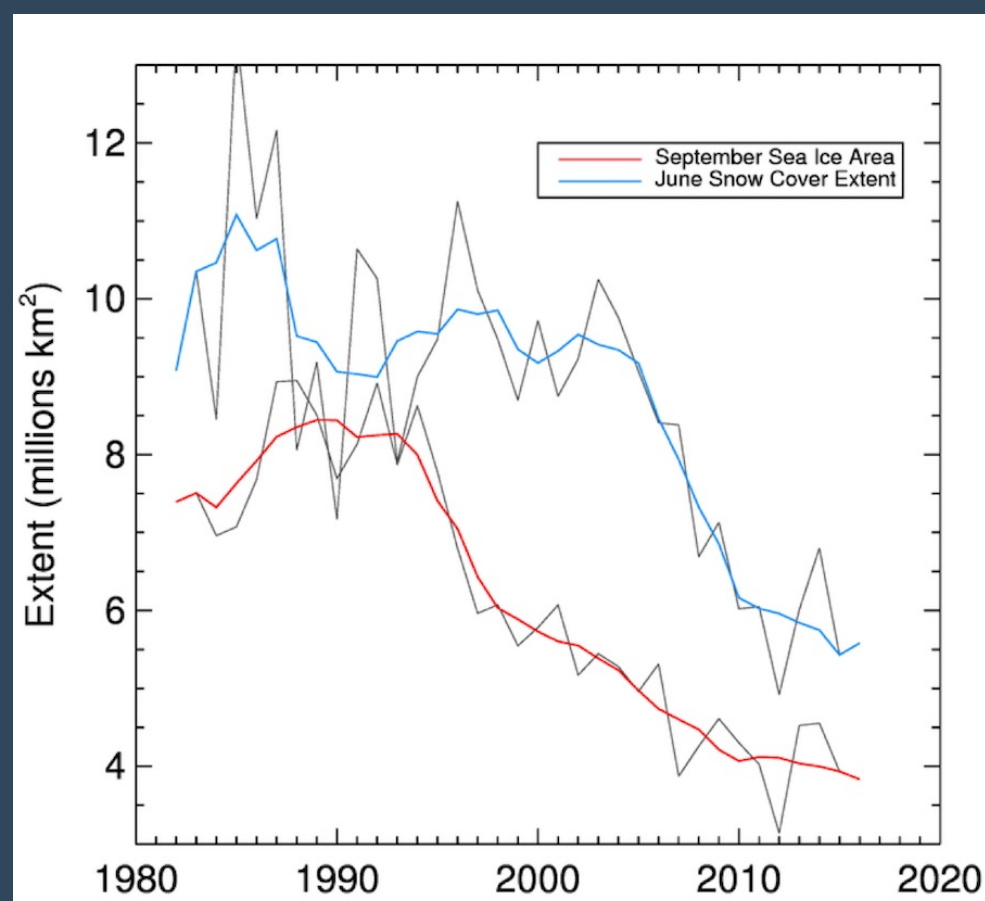
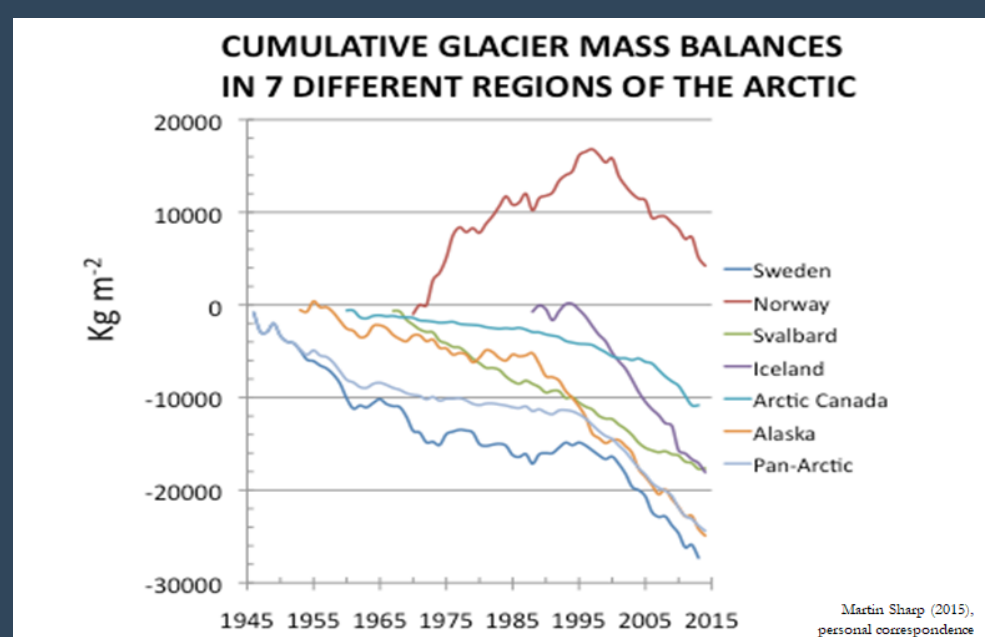


# What is the Arctic we have to have to sustain the global climate system?



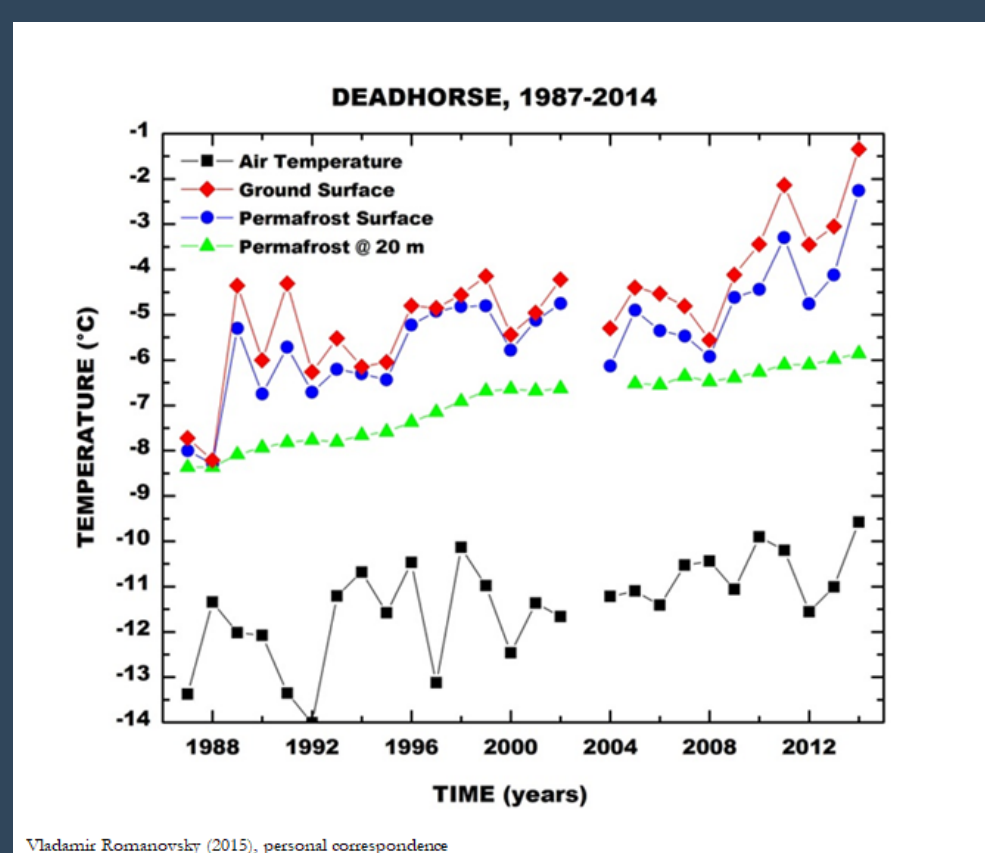
## REFLECTIVITY

Sea Ice Loss & Snow Cover Decline



## ICE STORAGE

Glacial Ice Mass Loss in Greenland, Canada, and Alaska



## CARBON STORAGE

Permafrost Thaw

Arctic 21 is an informal network of organizations and individuals focused on communicating the unraveling of the Arctic and asking the question:

"What is the future state of the Arctic?"

Rafe Pomerance, Chairman, Arctic 21  
Senior Arctic Policy Fellow, Woods Hole Research Center

