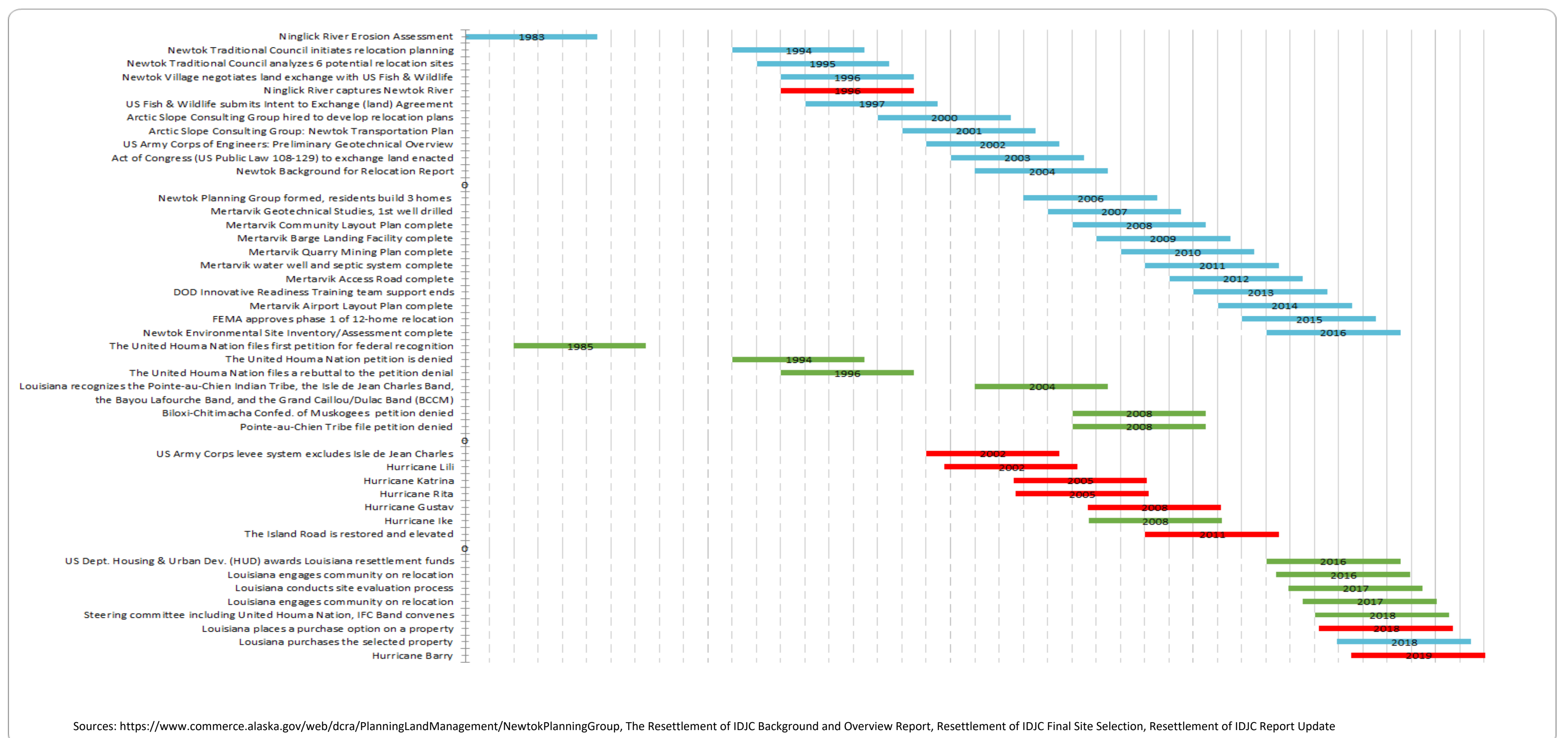


Let's talk about moving a community and building resilience.



EROSION & RELOCATION TIMELINES FOR NEWTOK, ALASKA AND ISLE DE JEAN CHARLES, LOUISIANA



Can coastal communities considering relocation due to climate change impacts leverage and build resilience? What part do stakeholders play in determining outcomes?

In 2019, the community at Newtok, Alaska embarks upon the final stages of a decades-long process to move to a site at Mertarvik.

Meanwhile, the community of Isle de Jean Charles, Louisiana faces difficult choices as it contemplates a move to a state-purchased location 40 miles from the island.

What conversations should we be having about resilience and relocation?

Serena Hoermann, MBA, Ph.D. Student,
 School of Public Administration
 Communications and Outreach Coordinator,
 Center for Urban and Environmental Solutions
 Florida Atlantic University

Frederick Bloetscher, Ph.D., P.E., Professor and Associate Dean,
 Department of Civil, Environmental and Geomatics Engineering
 Florida Atlantic University

Leonard Berry, Ph.D., Professor Emeritus
 Department of Geosciences
 Florida Atlantic University



Contact Serena Hoermann at shoermann@fau.edu

