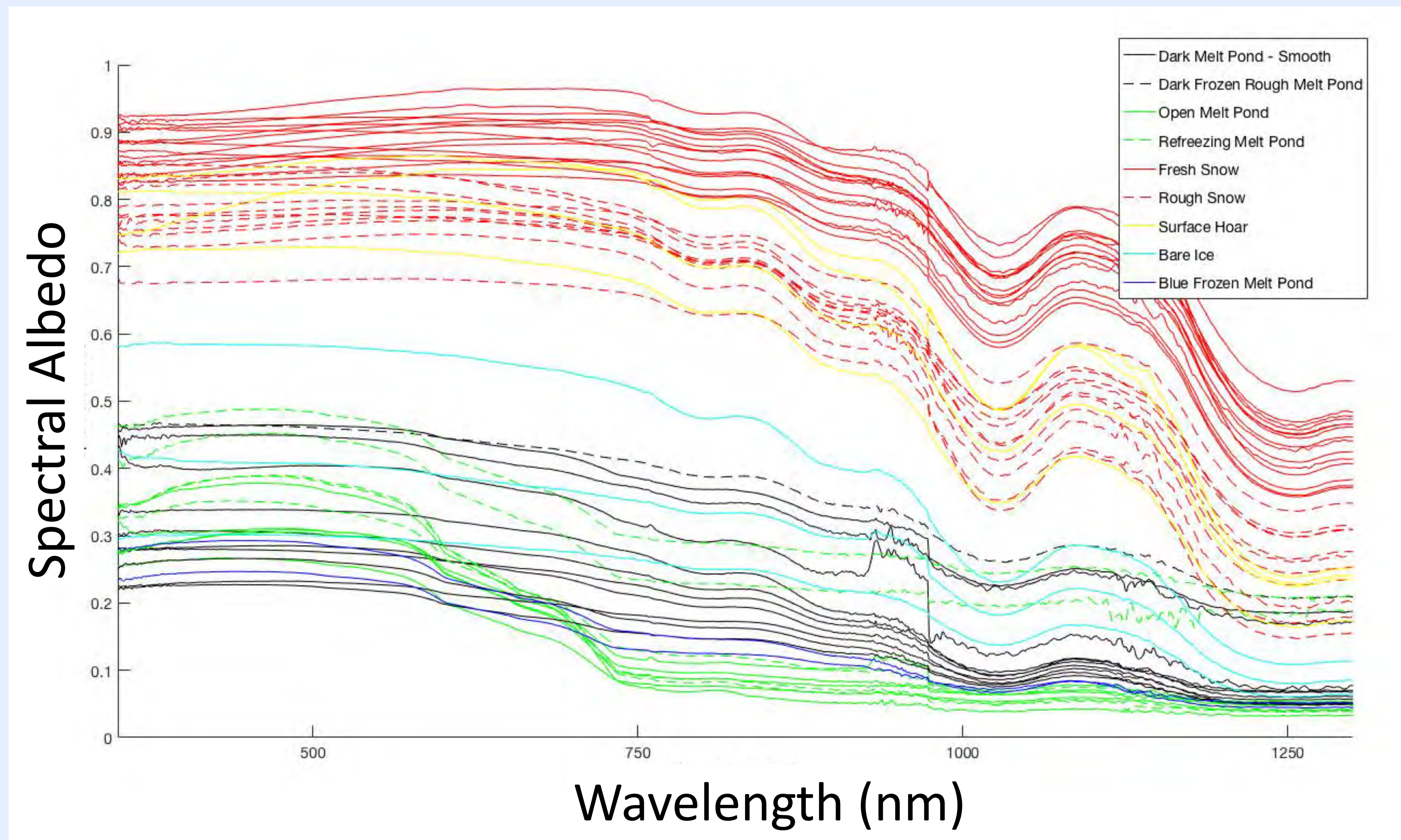


Alia L. Khan<sup>1,2,3\*</sup>, Julienne Streove<sup>2,3</sup>, Joseph Katich<sup>3,4</sup>, Thomas Krumpen<sup>5</sup>, Mark Serreze<sup>2,3</sup>

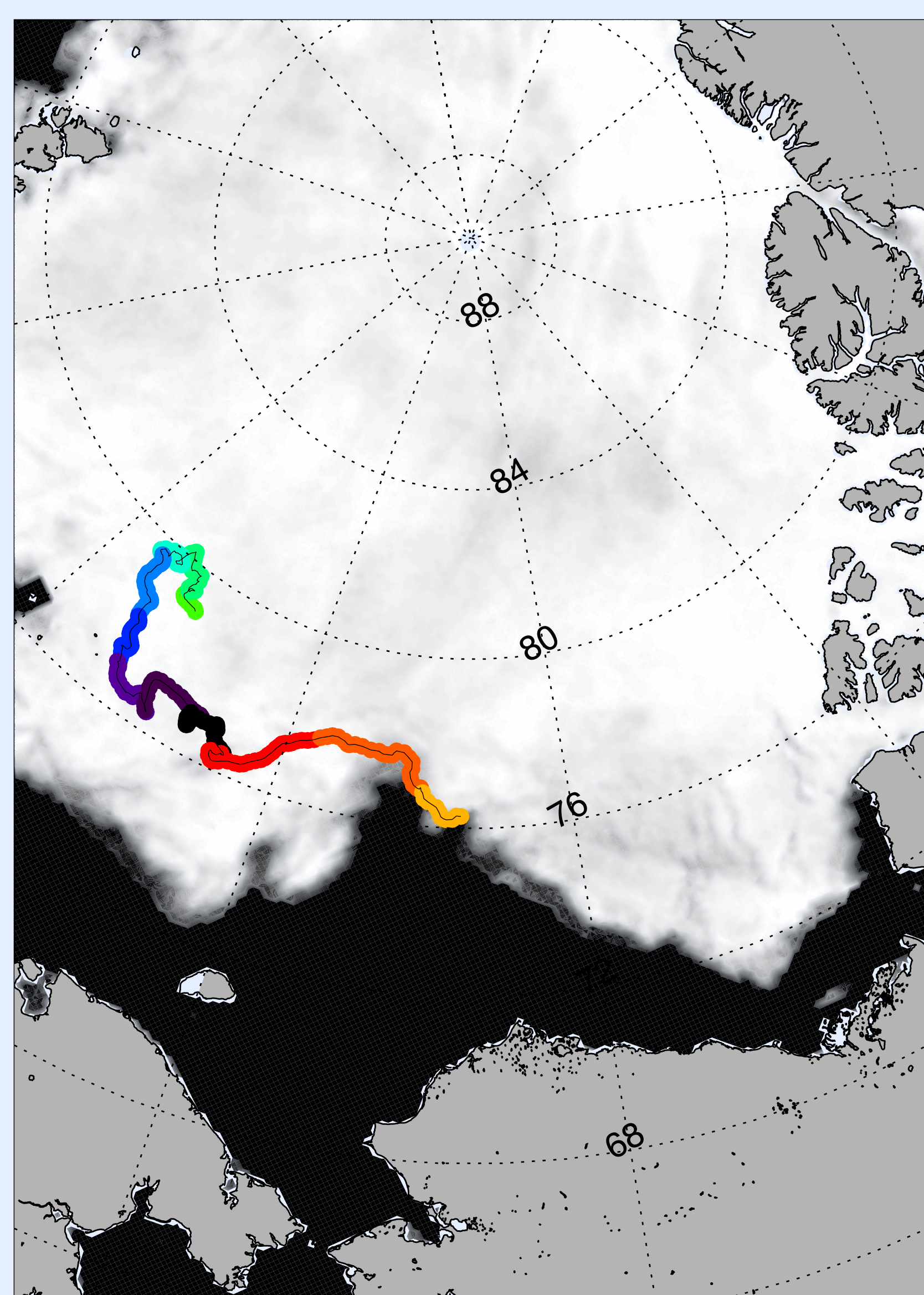
<sup>1</sup>Department of Environmental Sciences, Western Washington University, <sup>2</sup>National Snow and Ice Data Center and <sup>3</sup>Cooperative Institute for Research in Environmental Sciences, University of Colorado – Boulder, <sup>4</sup>Earth System Research Institute, NOAA, <sup>5</sup>Alfred Wegner Institute, Germany

## How does **BLACK CARBON** impact Arctic **SEA ICE ALBEDO**?



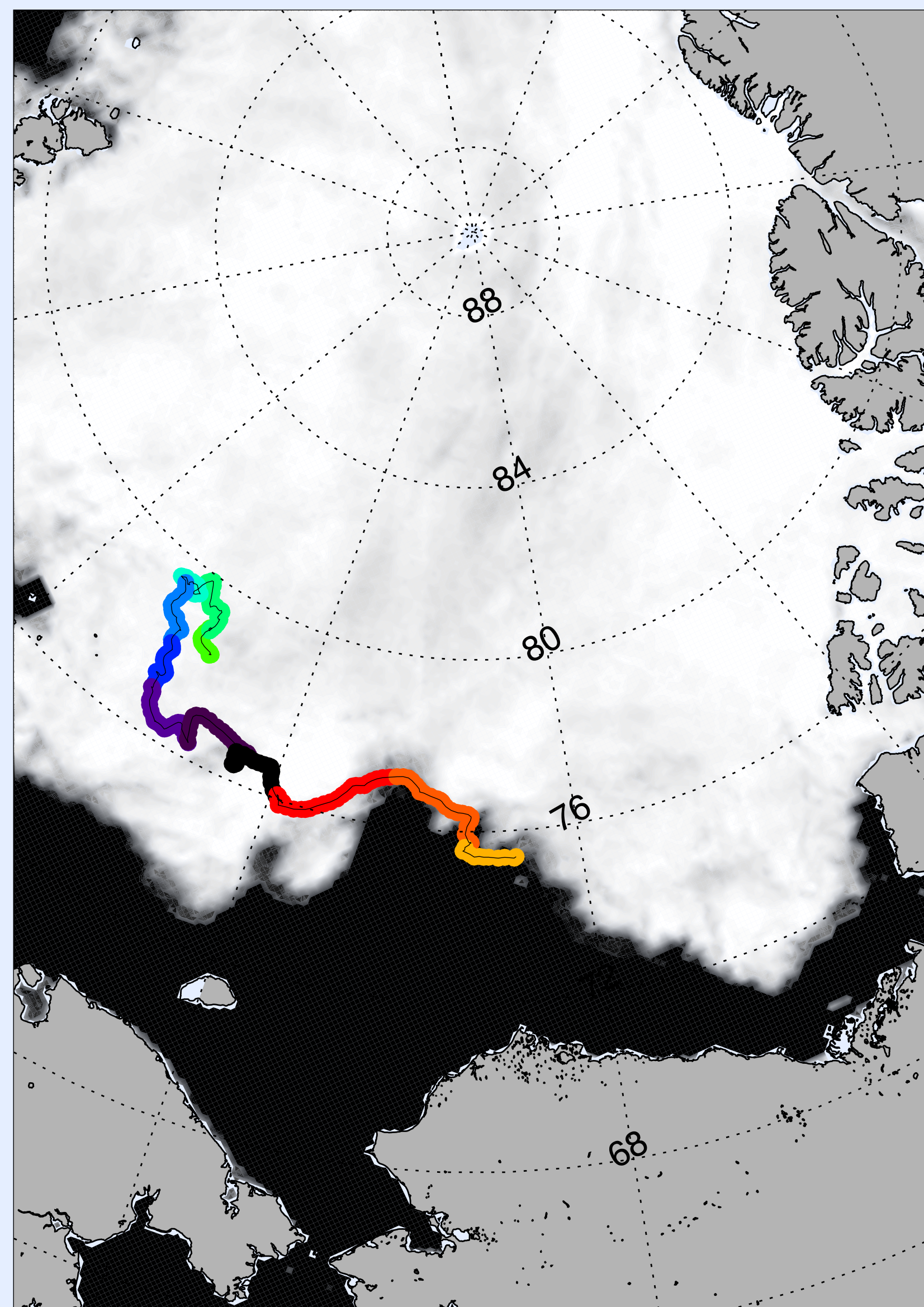
| Snow    | rBC (ng/g) | Hoar    | rBC (ng/g) |
|---------|------------|---------|------------|
| Average | 6.3        | Average | 11.1       |
| Stdev   | 2.5        | Stdev   | 14.3       |
| Max     | 9.5        | Max     | 46.0       |
| Min     | 1.9        | Min     | 4.0        |

Primary sources of **BLACK CARBON** to **SEA ICE** vary in space and time.



1 2 3 4 5 6 7 8 9 10 11 12  
Month

Sea ice floe back-trajectory for samples collected 8/17/18



1 2 3 4 5 6 7 8 9 10 11 12  
Month

Sea ice floe back-trajectory for samples collected 8/21/18



● Samples collected 8/17/18  
● Samples collected 8/21/18

HYSPLIT 800-hour Atmospheric back-trajectories.



\*alia.khan@wwu.edu

