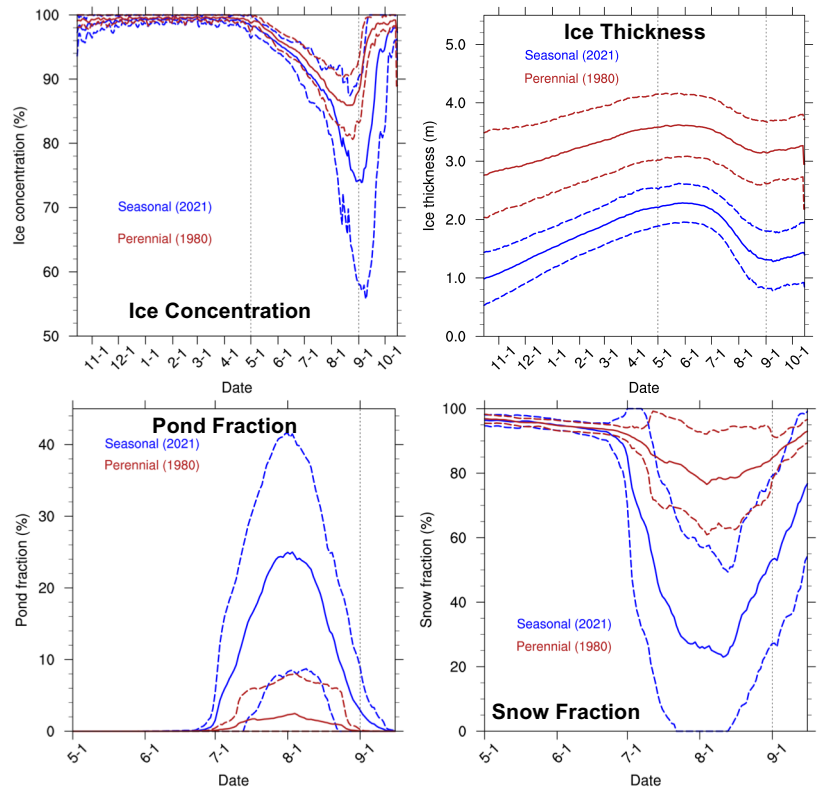
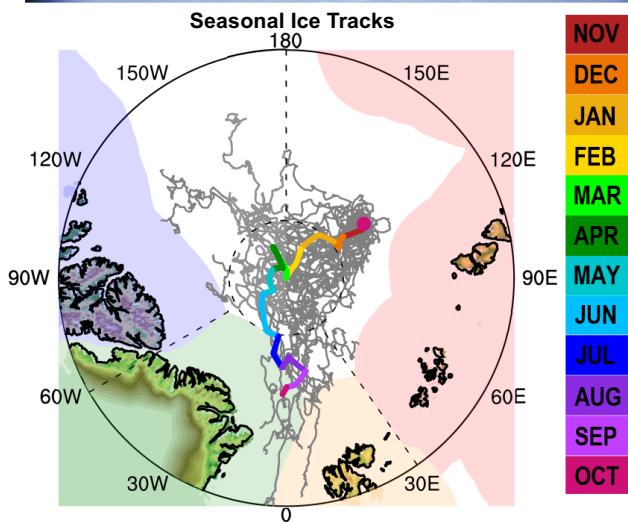


# Going with the floe as Arctic sea ice variability increases



Autumn 2019 the MOSAiC climate observatory will commence its year-long drift in the Arctic sea ice to study the changing ice. We tracked virtual ice floes from 30 climate model ensembles for a calendar year in “new”, seasonal conditions and the “old”, perennial conditions. Comparison of seasonal and perennial floe conditions indicates that during the melt season, the seasonal Arctic is much more variable and the predictability of ice thickness and concentration has decreased relative to perennial conditions.



Alice K. DuVivier

