

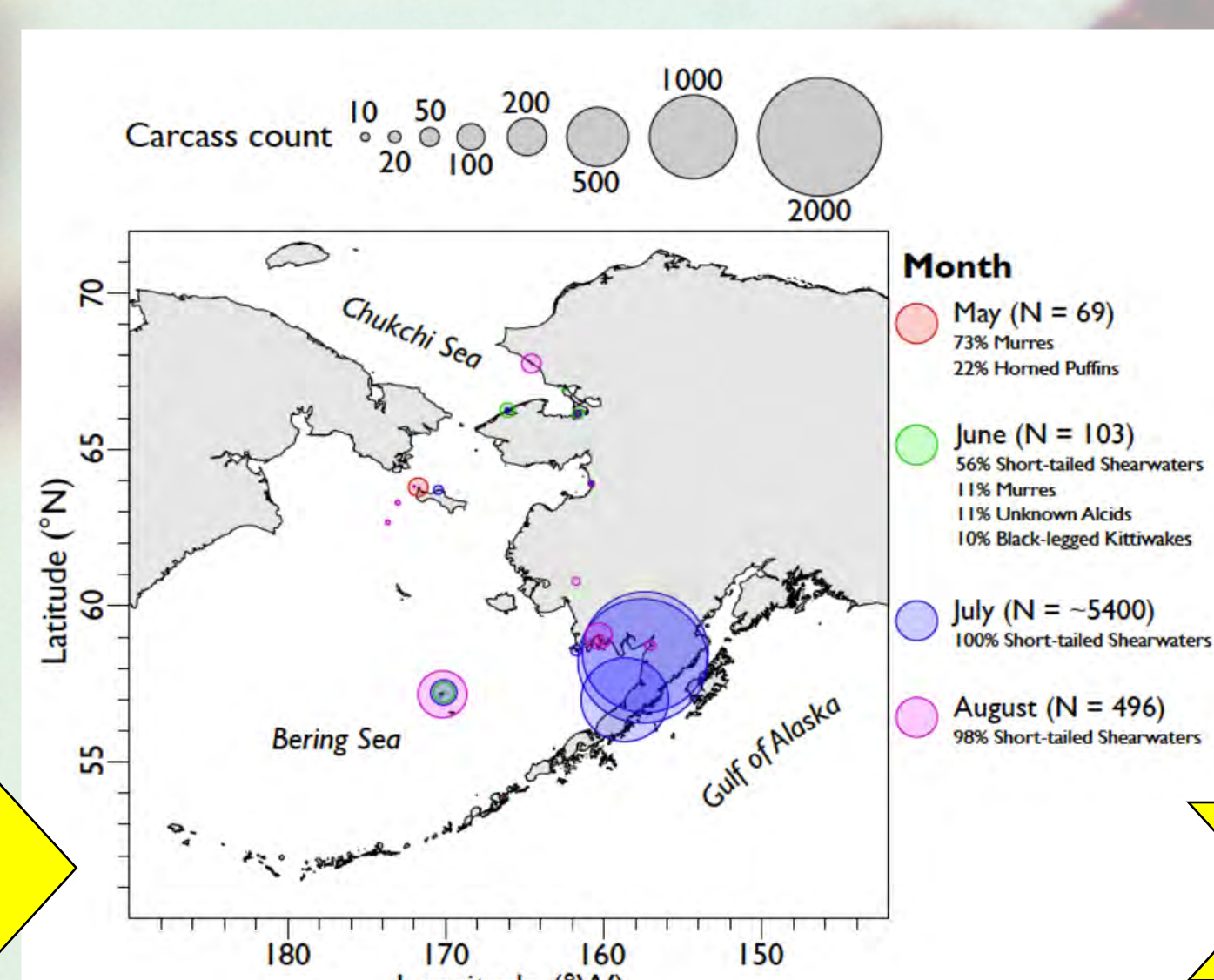
Co-production of knowledge, tools for decision-making, facilitating integration of scientific knowledge of all kinds at the community level, and supporting the training of local leaders all contribute to adaptive capacity and resilience.



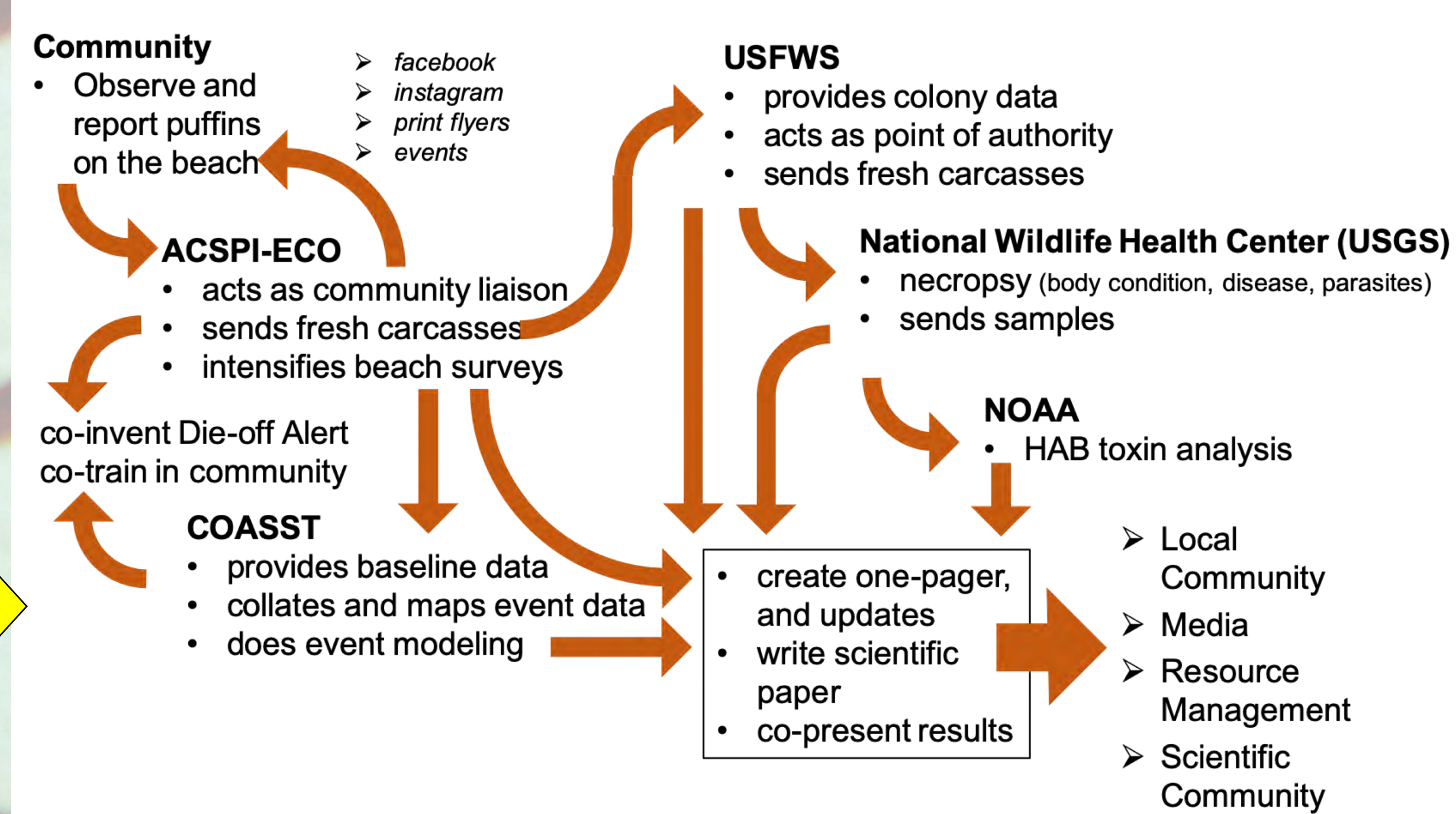
Hunter reports bird(s)



Environmental Sentinel collects data



Data are put into broader context; protocols created for better response.



Partnerships formed/strengthened.

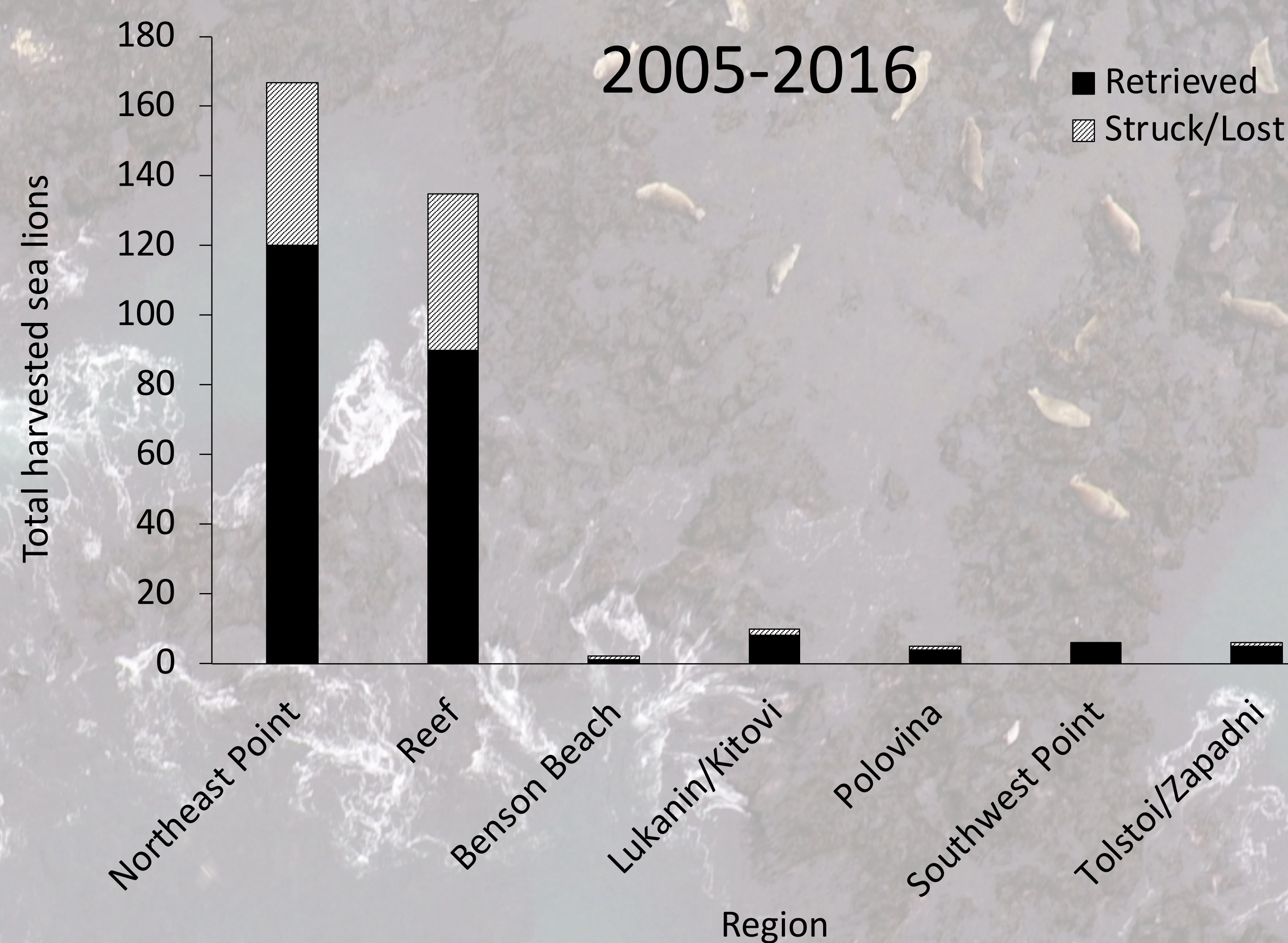
Case Study 1



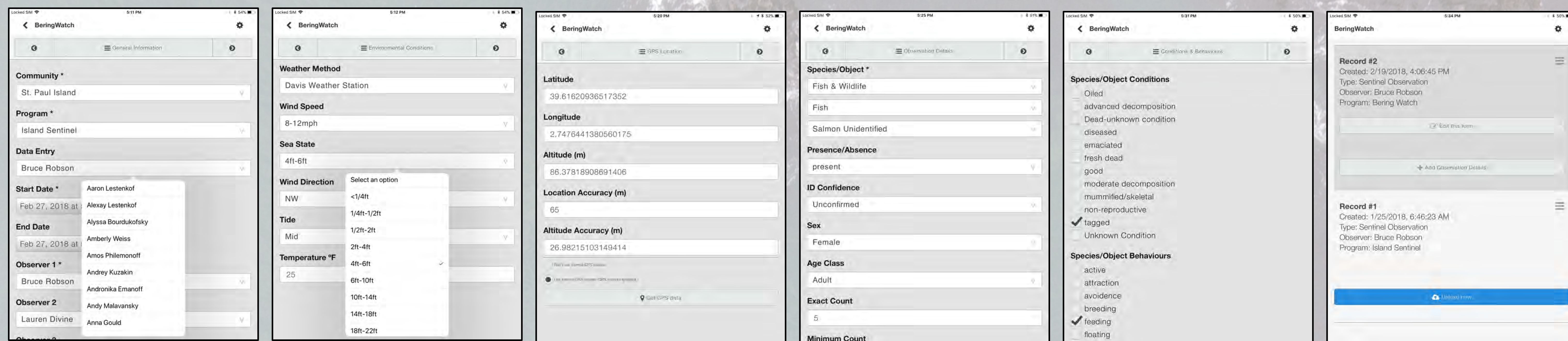
Traditional knowledge: information sharing



Biosampling: harvest data, disease, contamination info



Standardized Data Collection:



Case Study 2

The BeringWatch Indigenous Sentinels Network (ISN) is an expanding tribal-driven, collaborative effort comprised of a wide diversity of partners in Alaska and Canada that enables reliable environmental and biological data collection in order to support and inform decision-making. The ISN has successfully implemented a variety of ecological surveys for over 15 years in remote communities in the Bering Sea and Aleutian Islands, Alaska, in order to collect baseline data, track changes occurring in marine and terrestrial ecosystems, and secure funding to implement adaptation and resilience planning efforts.

Dr. Lauren Divine
Aleut Community of St. Paul Island

