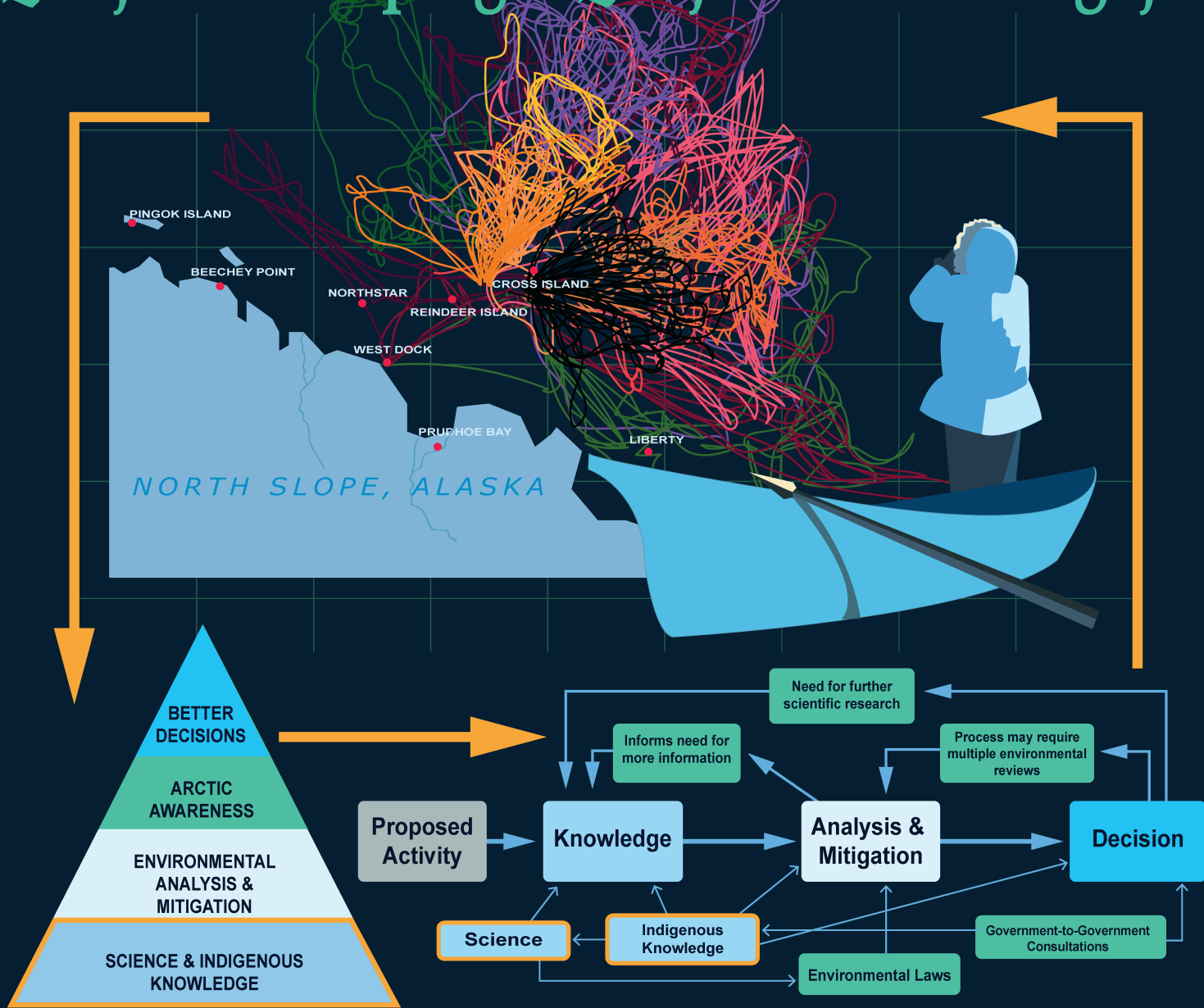


# OCEAN SCIENCE & Qaujimanitugangit Qaujimanikkuungajut



We apply two knowledge systems for a more holistic view of the environment and greater awareness of potential impacts from resource decision-making. In one project, we collaborated with local whalers from Nuiqsut, Alaska to clearly document whaling areas. This 12-year study outfitted the whalers with GPS units and recorded indigenous observations. The combination of **indigenous knowledge** with GPS data analysis documented the importance of specific areas for hunting. This information then allowed us to make decisions in a way that reduced potential interference with whaling practices.

<https://www.boem.gov>

<https://marinecadastre.gov/espis/#/search/study/364>

Catherine C. Coon, Jeffrey J. Brooks, Dennis K. Thurston, James J. Kendall,  
 Laura C. Mansfield, Mark A. Storzer, Jeleena M. Almario, Michael L. Haller



**BOEM**  
 BUREAU OF OCEAN ENERGY MANAGEMENT