

Observations, Society, & Policy

Henry P. Huntington

Pew Environment Group

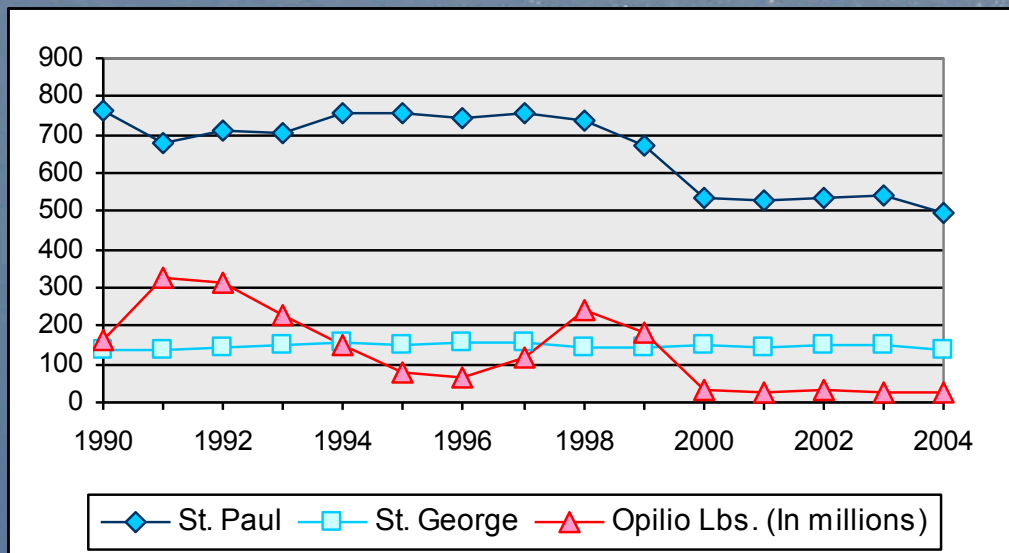
March 2012

US Arctic Observing Coordination Workshop

Putting Information to Use

- Understanding how environment affects people
- Understanding how people use the environment
- Understanding how people affect the environment
- *A few examples ...*

Do fisheries affect the Pribilofs?



Year	1990	2000
% Males	62.6	55.3
% Alaska Native	66.1	85.9
% aged 25-44	40.6	32.6

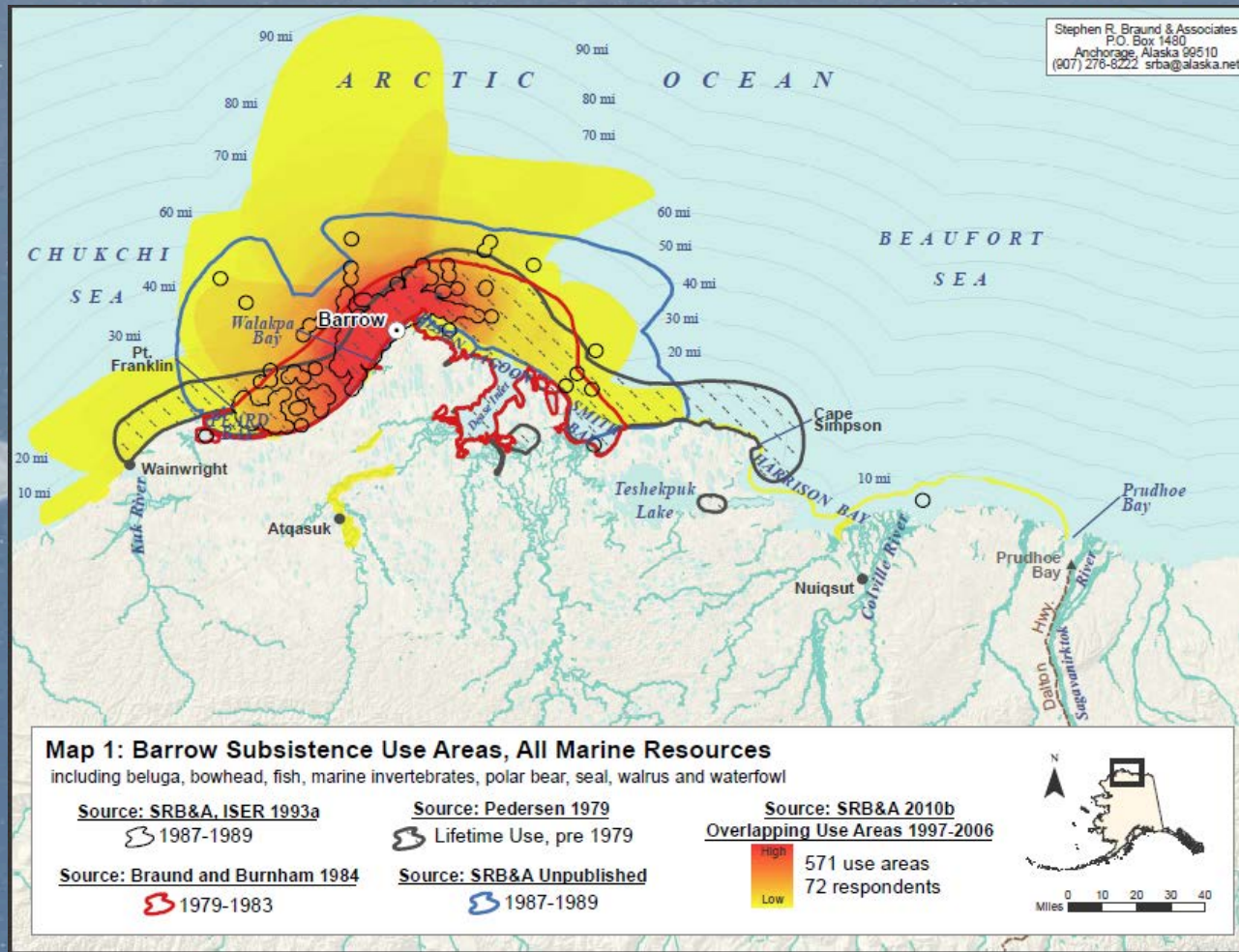
Census data, fish catch data, local population #s
 Explaining demographic change (or lack thereof?)

Do wind and ice affect walrus hunting on St. Lawrence Island?

Date	Walrus harvested	5 mile ice concentration	10 mile ice concentration	30 mile ice concentration	50 mile ice concentration	1800 UTC wind direction	2100 UTC wind direction	0000 UTC wind direction	1800 UTC wind speed	2100 UTC wind speed	0000 UTC wind speed
12-May	0	0.544	0.544	0.541	0.494	149.664	156.24	165.707	6.07	6.219	7.263
13-May	0	0.533	0.533	0.533	0.471	176.097	171.264	176.979	6.771	6.531	5.792
14-May	74	0.375	0.371	0.345	0.277	156.095	156.213	138.885	3.837	4.098	2.66
15-May	0	0.291	0.286	0.244	0.181	148.118	132.472	108.184	4.293	4.649	4.073
16-May	0	0.253	0.247	0.213	0.163	117.835	121.162	118.825	8.066	7.688	7.077
17-May	0	0.238	0.237	0.227	0.188	105.256	112.721	110.891	5.962	6.211	4.921
18-May	43	0.215	0.215	0.209	0.173	110.67	126.984	121.765	4.219	3.676	3.2
19-May	0	0.26	0.258	0.229	0.179	132.851	128.273	83.589	3.77	2.506	2.87
20-May	0	0.258	0.253	0.201	0.138	303.679	301.019	277.681	6.129	6.065	5.607
21-May	104	0.251	0.246	0.199	0.15	239.511	216.419	193.904	2.752	2.133	2.559
22-May	0	0.197	0.192	0.147	0.107	261.919	260.898	263.078	3.767	3.55	2.355
23-May	101	0.202	0.198	0.163	0.124	261.458	252.883	239.279	2.25	2.727	0.989
24-May	0	0.137	0.137	0.132	0.107	252.172	248.853	257.54	3.01	3.824	4.59
25-May	5	0.152	0.149	0.12	0.085	249.888	248.286	252.604	4.682	4.496	6.87

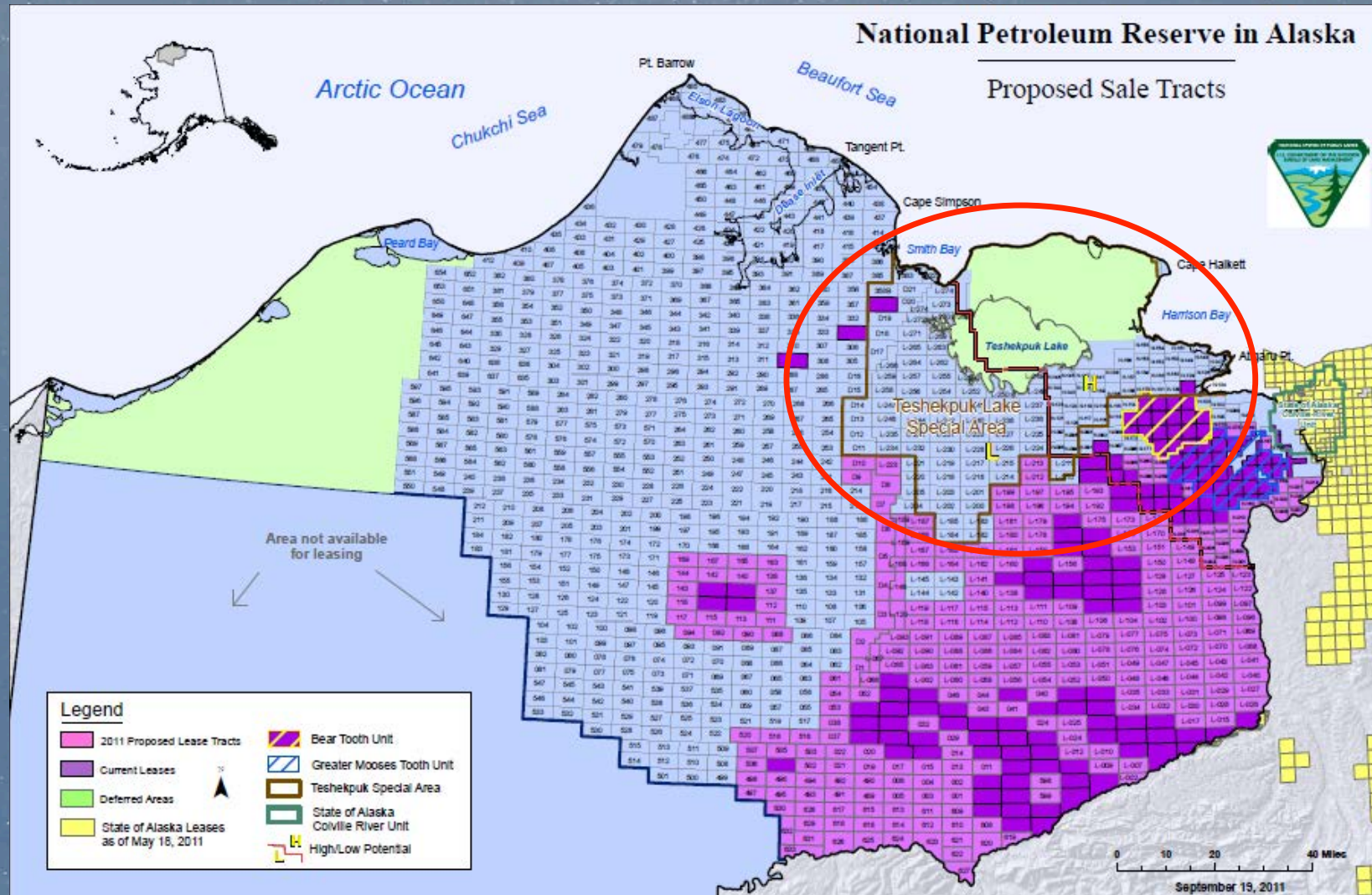
Ice, wind, walrus harvest data, daily in spring '96-'09
 Explaining environmental influence (22-30%)

Subsistence Use in Barrow



Hunting locations, travel routes
Determining “do not disturb” times & areas

Regulating Oil & Gas



- Caribou, waterfowl distribution
- Determining “sensitive” or “important” areas

Available Data

- (See previous three talks)
- US Census data
- Alaska Dept of Labor data
- Tribal data
- Wildlife data
- Industry data
- Community observations

Where to in 5 years?

- Data that are communicated effectively, in combination and in response to user needs
- Users that understand the data and their limitations

- *Are we using the data we have?*
- *How can we know what we will want?*