



ANNUAL REPORT



2024

Dear ARCUS Community,

This year has been one of meaningful transitions underwritten by continued dedication to our mission. We bid farewell to Helen Wiggins, whose leadership as Executive Director shaped ARCUS for many years, and welcomed Dr. Audrey Taylor as our Interim Executive Director. Dr. Taylor brings a fresh perspective to guide our work moving forward. We also thank outgoing ARCUS Board President Dr. David Cairns for his service and are pleased to welcome Dr. Victoria Herrmann as our new Board President.

2024 has also seen the birth of exciting innovations and collaborations within the ARCUS community. And while we witnessed both significant progress and unique challenges over the last year, ARCUS has remained steadfast in its mission to connect and support the many voices contributing to Arctic research and education.

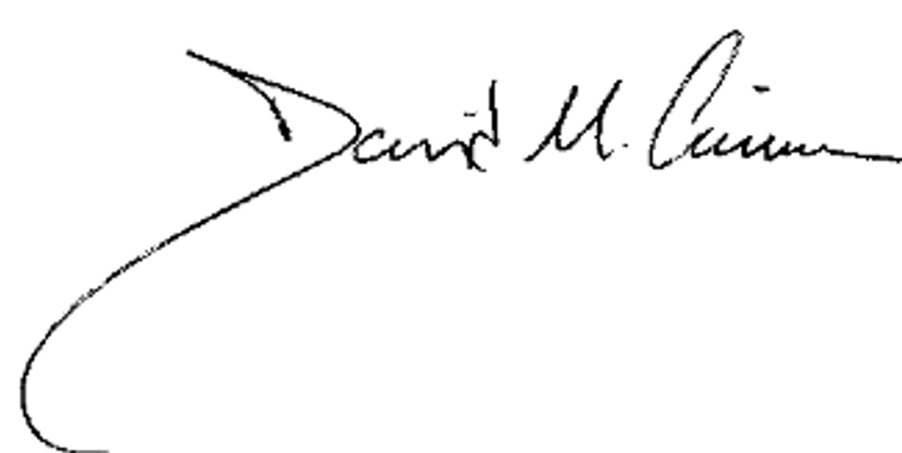
As in past years, the initiatives featured in this Annual Report reflect the shared efforts of our consortium. Programs such as the Bridging Arctic Gateways workshop and the Sea Ice for Walrus Outlook demonstrate ARCUS's dedication to fostering connections and integrating diverse perspectives. Our support for early-career researchers has provided a mechanism for engaging new voices in the Arctic research community to help address the region's social, economic, and environmental challenges.

While we celebrate these accomplishments, we also acknowledge facing a number of hurdles this year, including federal funding uncertainties and organizational transitions. These experiences have underscored the need for continued focus and collaboration as we navigate the road ahead for ARCUS, our consortium, and our central mission of supporting the Arctic research community.

Looking to the future, we remain focused on core initiatives such as enhanced networking opportunities for ARCUS members and continued engagement with Indigenous communities. These efforts will help to further ARCUS's impact and contribute to a vibrant, inclusive, and collaborative Arctic research enterprise.

On behalf of the ARCUS Board of Directors and staff, we extend our heartfelt gratitude to our members, partners, and funders for their unwavering support. Your contributions enable us to facilitate greater global understanding and support for the Arctic's unique environment and communities.

Thank you for being a part of this journey.



David M. Cairns
Board President, ARCUS



Audrey R. Taylor,
Interim Executive Director, ARCUS

Report Content:

Pg 2: Strategic Goals & Objectives (2020-2025)
Pg 3-4: Staff & Board of Directors
Pg 5-6: Member Institutions
Pg 7: Partner Organizations
Pg 8: Volunteer Contributors & Individual Members
Pg 9: Cooperative Agreement Overview

Pg 10: Award Recipients
Pg 11: Witness the Arctic & Webinar Contributors
Pg 12-13: Communication Highlights
Pg 14-15: Sea Ice for Walrus Outlook Program
Pg 16-18: Community Engagement Highlights
Pg 19-22: ARCUS Annual Meeting
Pg 26: Financial Report

STRATEGIC GOALS & OBJECTIVES (2020–2025)

Goal 1: Facilitate & Support Arctic Research Collaboration

- **Objective 1.1:** Provide Resources and Promote Innovative Practices for Collaborative and Interdisciplinary Research
- **Objective 1.2:** Connect and Support the Arctic Research Community Around Shared Topics of Interest
- **Objective 1.3:** Partner with Other Arctic Organizations to Catalyze and Broaden Networking Opportunities
- **Objective 1.4:** Promote Exchange, Collaboration, and Co-Production Between the ARCUS Community and US-Based Arctic Indigenous Community Members

Goal 2: Enhance the Effectiveness of Arctic Research Communication

- **Objective 2.1:** Increase Information Exchange and Knowledge Sharing Within the ARCUS Community
- **Objective 2.2:** Amplify and Share Arctic-Related Research, Knowledge, and Issues with Diverse Audiences
- **Objective 2.3:** Work with ARCUS Members to Prioritize and Address the Critical Needs of the ARCUS Community
- **Objective 2.4:** Build Awareness of and Cultivate Group Identity Between ARCUS, our Members, and our Partners

Goal 3: Educate K-16 Students & Formal and Informal Educators about the Arctic, & Engage them in Arctic Research

- **Objective 3.1:** Develop Professional Training Opportunities for Arctic Educators
- **Objective 3.2:** Champion Culturally Responsive Arctic Education and Outreach
- **Objective 3.3:** Foster Arctic Citizen Science and Community-Based Research
- **Objective 3.4:** Encourage Arctic Youth Involvement in Arctic Research Activities and Learning

Goal 4: Secure Resources to Support the ARCUS Mission

- **Objective 4.1:** Expand and Sustain a Diverse and Inclusive ARCUS Membership
- **Objective 4.2:** Strengthen ARCUS' Organizational Capacity
- **Objective 4.3:** Diversify ARCUS' Funding Sources
- **Objective 4.4:** Grow Reserves to Adapt and Respond to New Opportunities

ARCUS STAFF



Audrey R. Taylor
Interim Executive Director
audrey@arcus.org

Helen Wiggins
Special Projects Advisor
helen@arcus.org



Lynn Murphy
Director of Finance & HR
lynn@arcus.org

Brit Myers
Strategic Engagement Director
brit@arcus.org



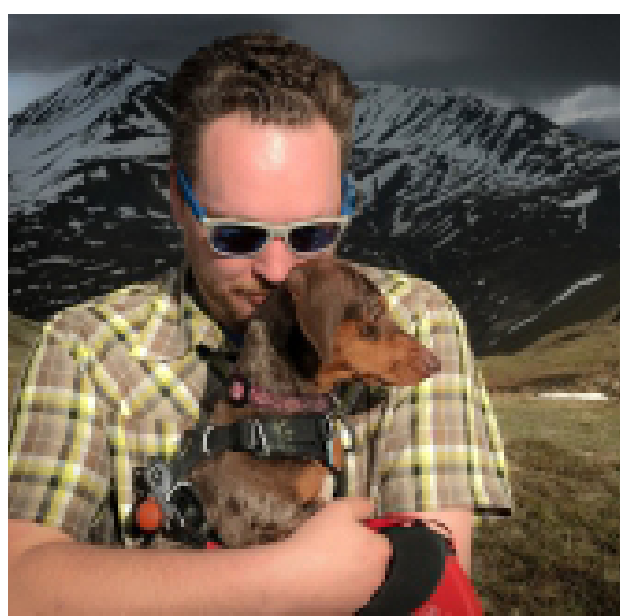
Michelle Gutz
Accountant
michelle@arcus.org

Janet Warburton
Education Project Manager
warburton@arcus.org



Ronnie Owens
Information Technology Director
ronnie@arcus.org

Stacey Stoudt
Project Manager
stacey@arcus.org



B. Zeb Polly
Systems Administrator
zeb@arcus.org

Lisa Sheffield Guy
SIWO Project Manager
sheffieldguy@aoos.org



Joed Polly
Video Production
joed@arcus.org

2024 BOARD OF DIRECTORS



Peter Webley (Secretary)
University of Alaska Fairbanks
pwwwebley@alaska.edu
Term End: 2026

David Cairns (President)
Texas A&M University
cairns@tamu.edu
Term End: 2025



Kaare Sikuaq Erickson (Treasurer)
Ikaagun Engagement, LLC
sikuaq@ikaagun.com
Term End: 2026

Cheryl Rosa
(Member-at-Large)
USARC on Detail to UAF
crosa@arctic.gov
Term End: 2025



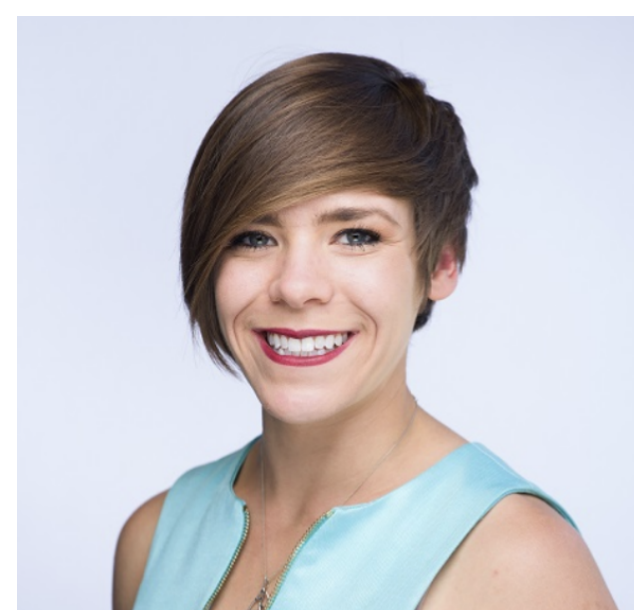
Julie Raymond-Yakoubian
(Member-at-Large)
Kawerak, Inc.
juliery@kawerak.org
Term End: 2024

Heather Sauyaq Jean Gordon
Child Trends
gordon.heather.j@gmail.com
Term End: 2025



Alexis Will
WWF US Arctic Program
alexis.will@wwfus.org
Term End: 2025

Canu Uluak Itchuaqiyak
Virginia Tech
canu@vt.edu
Term End: 2024



Victoria Herrmann
Georgetown University
victoria.herrmann@theartcticinstitute.org
Term End: 2025

Stacey Fritz
Alaska Adaptable Housing LLC
stacey@akadaptable.com
Term End: 2027



Helena Buurman
University of Alaska Fairbanks
hmbuurman@alaska.edu
Term End: 2026

Johanna Ikävalko
U. Lapland, Arctic Centre
johanna.ikavalko@ulapland.fi
Term End: 2026



Chelsea Koch
American University
ckoch@american.edu
Term End: 2026

ARCUS MEMBER INSTITUTIONS



www.tamu.edu

Represented By:
David Cairns,
cairns@tamu.edu



Syracuse
University

www.syracuse.edu

Represented By:
Jessica Mejia,
jzmejia@syr.edu
Melissa Chipman
mlchipman@syr.edu



COLD CLIMATE
HOUSING RESEARCH CENTER

www.cchrc.org

Represented By:
Jacqueline Muehlbauer
jacqueline@cchrc.org
Mindy O'Neill
mindy@cchrc.org



UArctic

www.uarctic.org

Represented By:
Diane Hirshberg,
dbhirshberg@alaska.edu
Gunnar Steffansson
gunnar.steffansson@uarctic.org



www.arctic.gov

Represented By:
Cheryl Rosa,
crosa@arctic.gov
John Farrell,
jfarrell@arctic.gov



www.virginia.edu

Represented By:
Matthew Jull,
mjull@virginia.edu
Howard Epstein,
hee2b@virginia.edu



www.usapecs.org

Represented By:
Mohammad Afzal Shadab,
mashadab@utexas.edu
Lavanya Ashokkumar,
lavanya3k@gmail.com



University of
New Hampshire

www.unh.edu

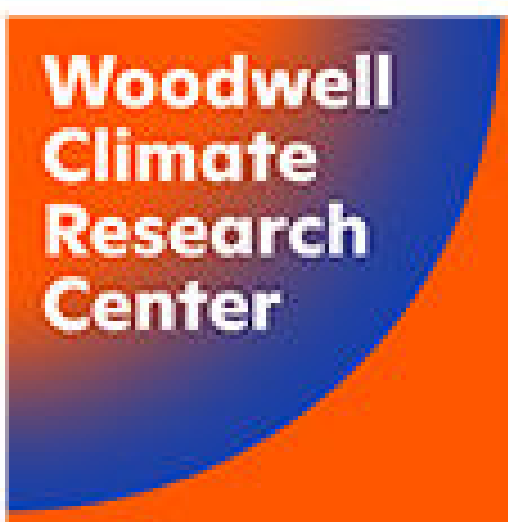
Represented By:
Katharine Duderstadt,
katharine.duderstadt@unh.edu
Ruth Varner
ruth.varner@unh.edu



UNIVERSITY
of ALASKA
SOUTHEAST

www.uas.alaska.edu

Represented By:
Carin Silkaitis,
cdsilkaitis@alaska.edu
Charmaine Robinson,
cmrobinson7@alaska.edu



www.woodwellclimate.org

Represented By:
Robert Max Holmes,
rmholmes@woodwellclimate.org
Anna Liljedahl,
aliljedahl@woodwellclimate.org



UNIVERSITY
of ALASKA
ANCHORAGE

www.uaa.alaska.edu

Represented By:
Marie Lowe,
mlowe@alaska.edu
Thomas Ravens,
tmravens@alaska.edu



www.gml.noaa.gov

Represented By:
Sara Morris,
sara.morris@noaa.gov
Christine Smith,
christine.smith@noaa.gov



KAWERAK, INC.

www.kawerak.org

Represented By:
Melanie Bahnke,
contact@kawerak.org
Julie Raymond-Yakoubian,
juliery@kawerak.org



www.asu.org

Represented By:
Shauna BurnSilver,
shauna.burnsilver@asu.edu
Stephanie Pfirman,
spfirman@asu.edu



www.abrinc.com

Represented By:
Adrian Gall,
agall@abrinc.com
Gerald Frost,
jfrost@abrinc.com



www.gwu.edu

Represented By:
Robert Orttung,
rorttung@gwu.edu
Dmitry Streletskiy,
strelets@gwu.edu



www.aos.org

Represented By:
Sheyna Wisdom,
wisdom@aos.org
Holly Kent,
kent@aos.org



www.uaf.edu

Represented By:
Nettie LaBelle-Hamer,
nettie.labellehamer@alaska.edu
Peter Webley,
pwebley@alaska.edu



www.arcticcentre.org

Represented By:
Johanna Ikävalko,
johanna.ikavalko@ulapland.fi
Timo Koivurova,
timo.koivurova@ulapland.fi



www.uspermafrost.org

Represented By:
Victoria Herrmann,
victoria.herrmann@theartcicstitute.org
Ming Xiao,
mzx102@psu.edu



www.sitkascience.org

Represented By:
Arleigh Reynolds,
areynolds@sitkascience.org
Naghham Sabah,
nsabah@sitkascience.org



DARTMOUTH
www.dartmouth.edu

Represented By:
Melody Brown Burkins,
melody.b.burkins@dartmouth.edu



National Renewable
Energy Laboratory

www.nrel.gov

Represented By:
Aaron Cooke,
aaron.cooke@nrel.org
Georgina Davis,
georgina.davis@nrel.gov



www.worldwildlife.org

Represented By:
Alexis Will,
alexis.will@wwfus.org
Stephanie Lee,
stephanie.lee@wwfus.org



UNIVERSITY OF
SOUTHERN MAINE

www.usm.maine.edu

Represented By:
Tracey Meagher,
tracey.meagher@maine.edu
Ross Hickey,
ross.hickey@maine.edu



WOODS HOLE
OCEANOGRAPHIC
INSTITUTION

www.whoi.edu

Represented By:
Carin Ashjian,
cashjian@whoi.edu



Sandia
National
Laboratories

www.sandia.gov

Represented By:
Mark Ivey,
mdivey@sandia.gov
Joshua Stein,
jsstein@sandia.gov



THE UNIVERSITY OF
MAINE

www.umaine.edu

Represented By:
Kristin Schild,
kristin.schild@maine.edu
Pips Veazey,
alice.veazey@maine.edu



Institute of Earth, Ocean, and
Atmospheric Sciences

www.rutgers.edu

Represented By:
Åsa Rennermalm,
asa.rennermalm@gmail.com

Learn More:
<https://www.arcus.org/arcus/members>

ARCUS PARTNER ORGANIZATIONS

Eskimo Walrus Commission

The Eskimo Walrus Commission partners with ARCUS to produce the Sea Ice for Walrus Outlook (SIWO).

National Weather Service - Alaska Region

The National Weather Service - Alaska Region partners with ARCUS to produce the Sea Ice for Walrus Outlook (SIWO).

SIKU

SIKU partners with ARCUS on observations tracked through the Sea Ice for Walrus Outlook (SIWO) program.

Divergent Science LLC

Divergent Science LLC works with ARCUS on evaluation and community network assessment activities.

Université Catholique de Louvain

Université Catholique de Louvain is a project partner for the Sea Ice Prediction Network.

Western Alaska Partnership

ARCUS is an participant in the Western Alaska Partnership.

Alaska Natural Resource & Outdoor Education

ARCUS is working with Alaska Natural Resource & Outdoor Education (ANROE) to produce the 2025 Outdoor Education Symposium.

Interagency Arctic Research Policy Committee (IARPC)

ARCUS staff work with IARPC on collaborative programming and provide leadership support for the Polar Technology Collaboration Team.

Smithsonian Arctic Studies Center

The Smithsonian Arctic Studies Center provides D.C. host support for the ARCUS Indigenous Scholars Program.

International Arctic Science Committee

ARCUS staff currently serve on ICARP IV advisory committees.

National Snow & Ice Data Center

The National Snow & Ice Data Center is a project partner for the Sea Ice Prediction Network.

Potsdam Institute for Climate Impact Research

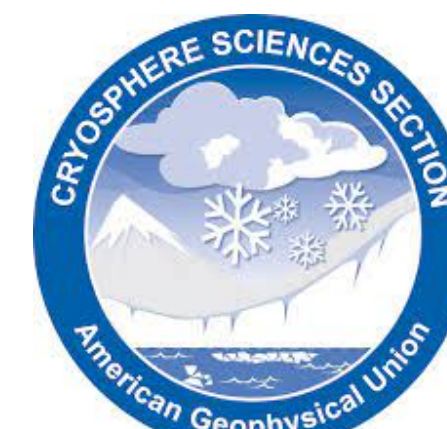
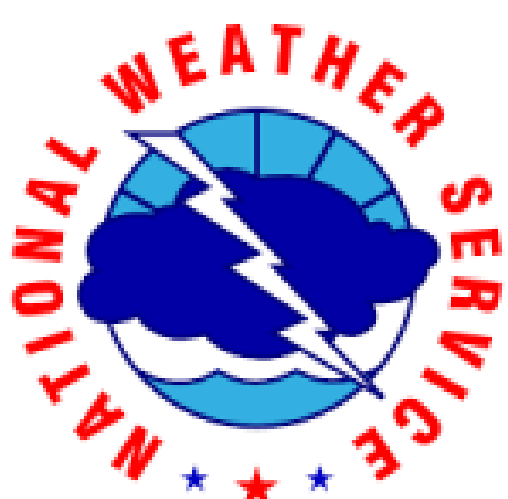
Potsdam Institute for Climate Impact Research is a project partner for the Sea Ice Prediction Network.

University of Washington

University of Washington is a project partner for the Sea Ice Prediction Network

ELOKA

ARCUS staff serve on the ELOKA Observations Working Group.



Learn More: <https://www.arcus.org/arcus/partners>

VOLUNTEER CONTRIBUTORS & INDIVIDUAL MEMBERS

ARCUS MEMBERSHIP COMMITTEE

Adrian Gall
Stacey Fritz
Brit Myers

Keith Reimink
Alexis Will
Sara Morris

Joshua Stein
Katherine Ginsbach
Victoria Herrmann

SIWO WORKSHOP PARTICIPANTS

Catherine Sopow
Mary-Beth Schreck
Jill Prewitt
Kaare Sikuaq Erickson
Lisa Sheffield Guy

Gay Sheffield
Hajo Eicken
Vera Metcalf
Marty Eeleengayouq
Brandon Aqef Waghiyi

Stacey Lucason
Robert Tokeinna, Jr.
Marcus Barr
Ozenna

BRIDGING ARCTIC GATEWAYS
PARTICIPANTS

Katrina Armstrong
Matthew Balazs
Sean Birkel
Emmanuel Boss
Helena Buurman
Seth Campbell
Habib Dagher
Seth Danielson
Ginny Eckert

Nima Farzadnia
Anne Heberger Marino

Mindy O'Neill
Glenn Page
Kristin Schild
Cody Sheltra,
Tommy Sheridan
Peter Stein
Adam St. Gelais
Martin Truffer
Pips Veazey

Gayle Zydlewski
Chris Barb
Lee Karp-Boss
Jeremy Kasper
Adam Low
Paul Mayewski
Brit Myers
Charles North
Rosa Vogel

EARLY CAREER AWARD COMMITTEE

Lavanya Ashokkumar
Josephine-Mary Sam
Lisa Sheffield Guy

Claire Griffin
Onema Adojoh

Julie Loisel
Stacey Stoudt

BOARD NOMINATING COMMITTEE

Audrey Taylor
Brit Myers

Heather Sauyaq
Stacey Fritz

Jean Gordon
Victoria Herrmann

2024 ARCUS INDIVIDUAL MEMBERS

Abhisek Saha
Acacia Johnson
Ahmed Ramadan
Aimee Neeley
Alyssa Burns
Ana Sofia Santiago
Andrew Uccello
Anna Maria Medina
Anna Russell
Armina Soleymani
Ashok Pandey
Barry Volson
Ben Kopec
Benjamin Mäki
Brittney Szabo
Cana Itchuaqiyag
Carenza Williams
carolina behe
Chelsea Koch
Christina Anaya
Christina Buffington
Claire Jensen
Cody Johnson
Danielle Verna
David M. Cairns
David McNally
Dawn Marie Lemke
Dean Wallraff
Debasmita Misra
Dee Barker
Diane Hirshberg
Elena Harner
Emma Loeber

Haley Cynar
Hang Kei Simon Wong
Heather Jean Gordon
Ho Giustino Lee-Biachler Jones
Irina Panyushkina
Itorobong Raphael Etuknwa
Jaona Ravelonjatovo
Jay Kim
Jean E. Balestrery
Jerry Brown
John Stedman
Jonathan Raberg
Jonathan Shapiro
Jose Solorzano
Julie Raymond-Yakoubian
Kaare Sikuaq Erickson
Karl Fred Huemmrch
Kay McMonigal
Keith Alverson
Kelli Park
Lane Rowland
Laura Zanotti
Lauren Shew
Lei Wang
Leonid Yurganov
Lisa Luken
Liu Wenxuan
Lorene Lynn
Mangaiyarkarasi Ravirajan
Marissa Record
Mary Gibbons
Masha Monakhova
Mathea Stevens

CCS IN THE FAR NORTH CONFERENCE
STEERING COMMITTEE

Audrey Taylor
Svea Anderson
Sophia Crump

Dennis Davis
Katie Spellman
Núria Castell

David Cairns
Janet Warburton
Lisa Sheffield Guy

Max Wolf
Michael R. Lilly
Michael Weintraub
Mikayla Stewart
Millie Lambert
Ming Xiao
Monika Sikand
Muhammad Ul Fateh
Murielle Nagy
Nathalie Ylenia Triches
Nathan Ernster
Neil Steven Gardner
Nikki Becker
Oluwakunle Moyofoluwa
Ogunsakin
Onema Adojoh
Otis Crandell
Peeranut Visetsuth
Peter Richardson
Pips Veazey
Rachel Gibilisco
Ragen Davey
Randy A. Kee
Renato Fakhoury
Roben Itchoak

Robert D. Hollister
Robert Graham
Robert W Faubel
Seira Duncan
Shawnee Traylor
Shiori Nakaya
Shreyas Sunil Gaikwad
Shuyu Zhang
Sian Shields
Stacey A. Fritz
Stephen Carmel
Suhail Khan
Suzann Speckman
Sylvia Schreiner
Thomas Kelly
Tim Nichols
Timothy Cabalo
Tom Onyango
Victoria Herrmann
Wesley Moses
Yajaira Fuentes-Tauber
Yilin Liu
Yuji Kodama
Yvette Gonzalez

ARCUS COOPERATIVE AGREEMENT



Building Community in Arctic Research: Communication, Research Support, and Multi-Knowledge System Integration

An NSF-funded Cooperative Agreement (2019–2024; Award # OPP-1928794) supports the work we do to nurture collaborations across disciplines, sectors, and perspectives; and to broaden participation across the Arctic research enterprise.

ARCUS Cooperative Agreement activities focus on:

- Research community support, including fostering community-driven research initiatives through virtual tools and support of early-career researchers;
- Networking activities, including network analysis and community-building events for the Arctic research community;
- Collaboration with Indigenous communities and knowledge systems, including integration of Indigenous knowledge with weather and ice predictions, and support for Indigenous scholars of all career levels;
- Arctic research communications and outreach; and
- Support of the Interagency Arctic Research Policy Committee (IARPC).

The added value of these research support functions—effective collaboration management, networking, communications, and outreach—is key to successful interdisciplinary research.

WHAT KINDS OF ACTIVITIES DOES THE COOPERATIVE AGREEMENT SUPPORT?



Arctic Community Networking



Arctic Indigenous Scholars Program



Early Career Conference Awards



Arctic Citizen Science Virtual Conference



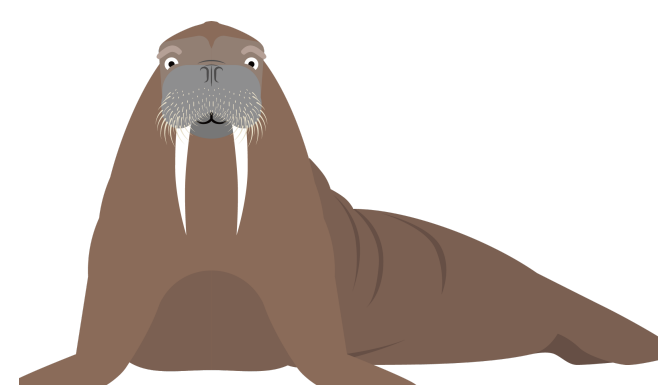
Arctic Research Seminar Series



Communication Tools



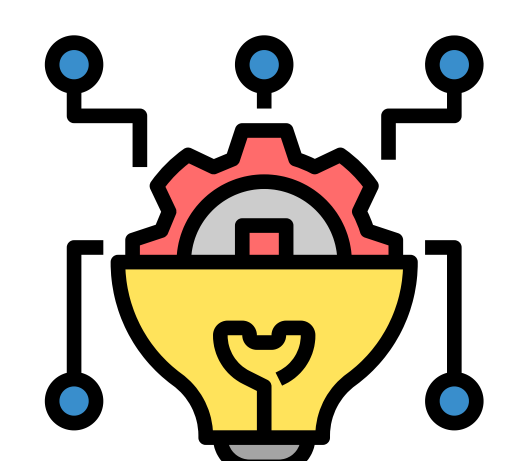
Collaboration Workshops



Sea Ice for Walrus Outlook



Cross-Network Coordination Efforts



Polar Technology Community Support

Arctic Indigenous Scholars

The Arctic Indigenous Scholars program creates a space for Indigenous scholars to educate and inform policy- and decision-makers on Arctic issues. Three Arctic Indigenous Scholars were selected in 2023 by a seven-member volunteer selection committee. Two scholars, Craig Chythlook and Taniesha Moses, traveled together to meet with agency and government officials in Washington, DC in March of 2024 and, in September 2024, Billy Adams used the award to participate in the National Tribal & Indigenous Climate Conference.



Craig Chythlook (Yup'ik/Bristol Bay, AK) - Craig is a non-traditional graduate student at the University of Alaska Fairbanks (UAF), with a background as a commercial salmon fisherman and 19 years of small business ownership. His policy engagement will focus on Indigenous food sovereignty and building equity in resource management.

Taniesha Moses (Athabscan/Fairbanks, AK) - Taniesha is the Indigenous Wellness and Outreach Coordinator for the University of Alaska Fairbanks Rural Student Services program. The focus of her policy-maker engagement is the preservation of Indigenous food sovereignty and the role that traditional foods play in community health and well-being.

Billy Adams (Iñupiat/Utqiagvik, AK) - Billy is an Iñupiat elder, hunter, and lifelong resident of Utqiagvik. The focus of his policy-making engagement is on Arctic research co-production, marine resource management, and food sovereignty.

More information: <https://www.arcus.org/indigenous-scholars/2023>

Early Career Conference Funding Awards

This ARCUS Early Career Conference Funding Award supports the participation of US-based, early career researchers in meetings and events relevant to Arctic research, with a focus on underrepresented minorities (Black, Indigenous, and People of Color; BIPOC).



Congratulations To:

Isabel Rivera
(Pennsylvania State University)

Loreto Paulino Jr.
(Woods Hole Oceanographic Institute)

Izuchukwu Ezukanma
(University of Florida)

Daniel Price
(West Virginia University)

Shriya Thakkar
(Louisiana State University)

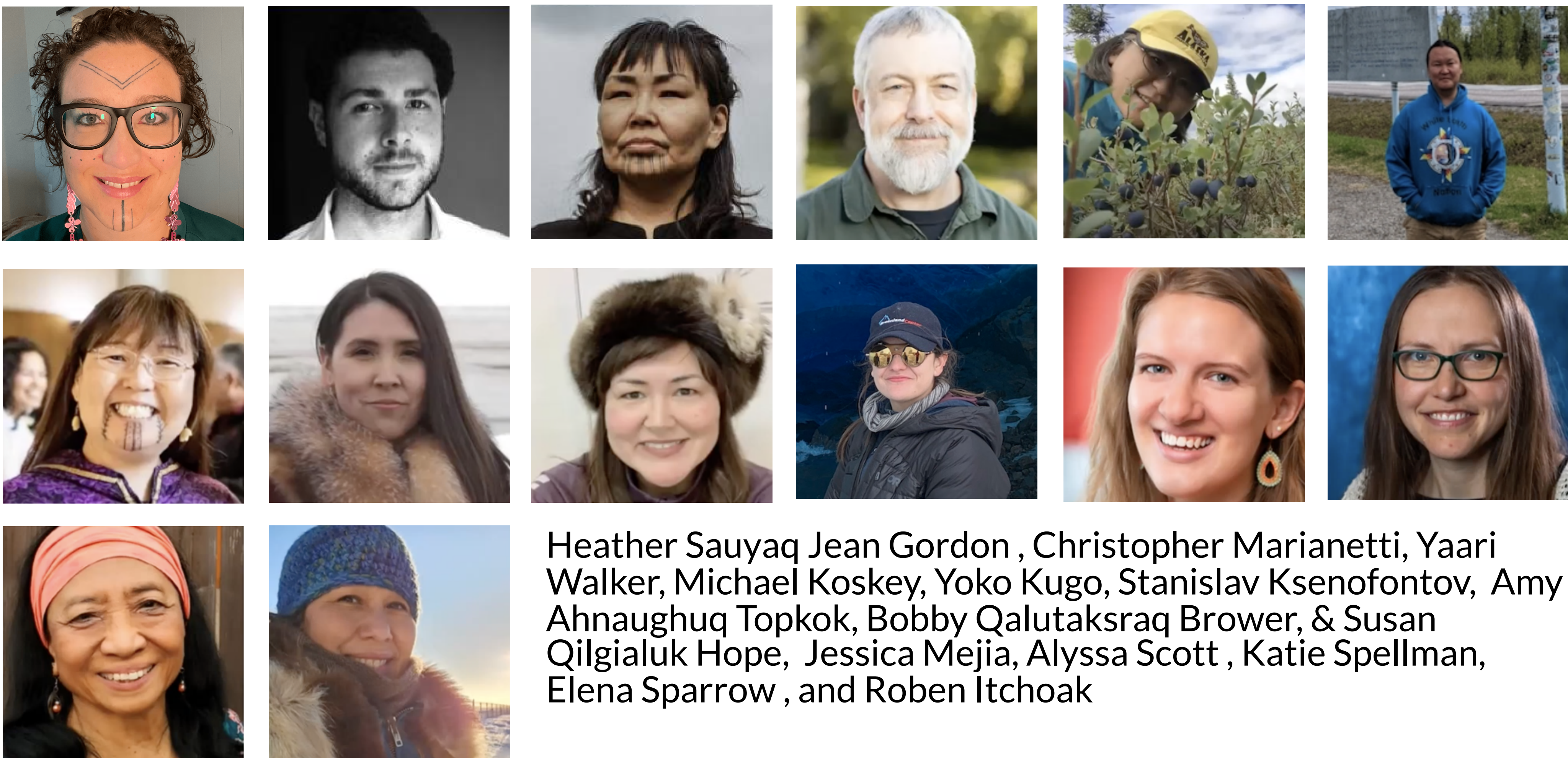
Solange Saxby
(Dartmouth College)

More information: <https://www.arcus.org/early-career-funding>

WITNESS THE ARCTIC CONTRIBUTORS



WEBINAR SPEAKERS



COMMUNICATION TOOLS

PRODUCTION
& ANNUAL
USAGE
STATISTICS

Witness The Arctic



- 5 community highlight issues
- 8,929 subscribers

ARCUS Website



- 198,124 annual page views
- 10,000+ files

Mailing Lists



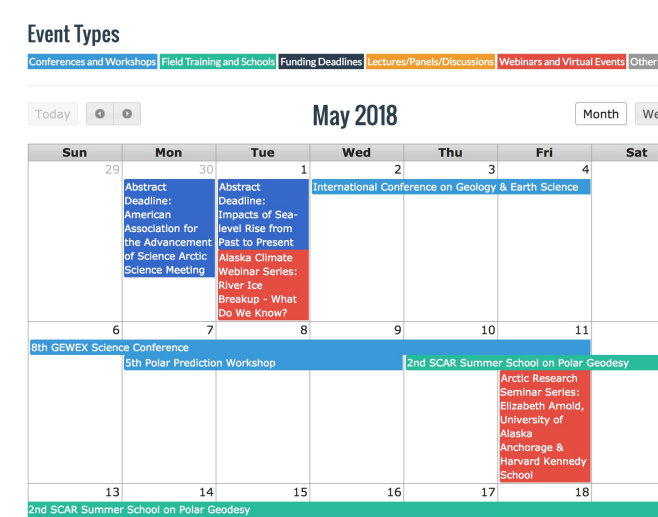
ArcticInfo

- 183,885 annual email opens
- 5,651 subscribers

Polar Education List

- 1,757 subscribers

Arctic Calendar



- 4,146 events
- 46,045 annual views

Monthly Newsletter



- 14,255 email opens
- 2,715 subscribers

Social Media Followers



- 4,591 X/Twitter
- 5,934 Facebook
- 1,654 Instagram

Polar Media Archive



- 23,500+ free to use images

ARCUS YouTube



- 349 videos
- 4,571 annual views

CONNECT THE ARCTIC

CONNECTING PEOPLE

BUILDING PARTNERSHIPS

GROWING COMMUNITY



Connect the Arctic is an online community open to anyone with an interest in Arctic research, education, and collaboration. Designed as a hub for sharing knowledge and fostering connections, this platform welcomes contributions from researchers, educators, students, and others passionate about Arctic topics.

Members can explore interest-based groups, join discussions, and stay updated on the latest Arctic news, research, and events. Whether you're a seasoned expert, a community member, or new to Arctic issues, your voice and participation are valued.

Key Features of Connect the Arctic:

- Participate in groups and discussions tailored to your interests.
- Share and discover the latest Arctic news, resources, and research.
- Build connections with individuals and organizations to foster collaboration.
- Stay informed about announcements, events, and community updates.

You don't need to be an ARCUS member to join. Simply visit <https://connectthearctic.com/> to explore this resource and get involved.

The workspace currently hosts two main groups:

- **The Arctic Science Education Network:** Connecting Arctic educators and researchers to improve Arctic education and outreach.
- **The Community & Citizen Science in the Far North Community of Practice:** Connecting community and citizen science efforts across the Arctic.

We plan to create space for additional initiatives, including member-led groups, in early 2025

More information: <https://connectthearctic.com/>



@ArcticResearch

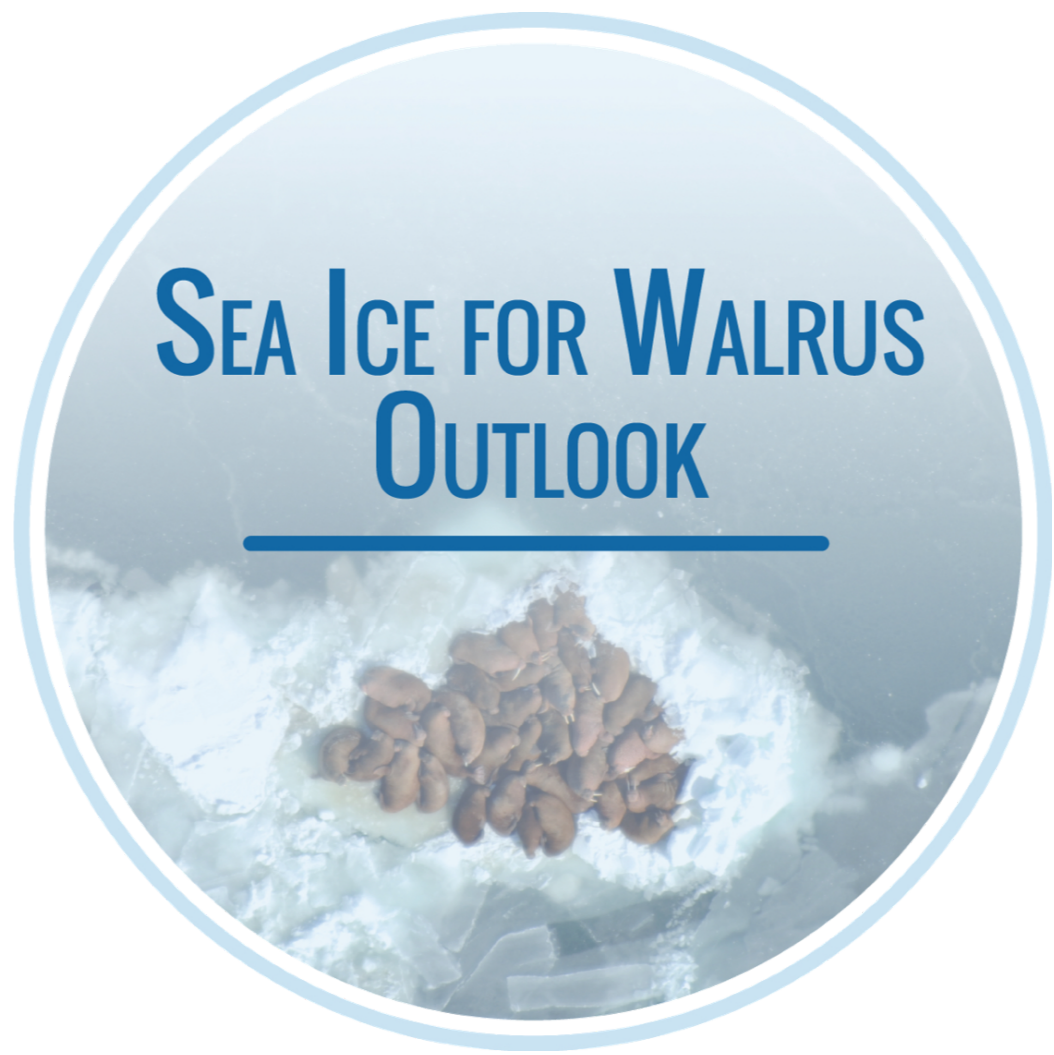


@ArcticResearchConsortium
@Polar.TREC
@SeaIceForWalrus



Company: ArcticResearch
Group: Sea Ice Prediction Network

Sea Ice for Walrus Outlook



The Sea Ice for Walrus Outlook (SIWO) is a resource for Alaska Native subsistence hunters, coastal communities, and others interested in sea ice and walrus. The SIWO provides weekly reports each spring with information on weather and sea ice conditions relevant to walrus in the northern Bering Sea and southern Chukchi Sea regions of Alaska.

More information:
www.arcus.org/siwo

Follow us on Facebook:
www.facebook.com/seaiceforwalrus



LOCAL OBSERVERS:

Shishmaref:
Curtis E. Nayokpuk

Wales:
Robert Tokeinna, Jr.

Brevig Mission:
Marcus Barr

Gambell:
Clarence Irrigoo, Jr.

Savoonga:
Aqef Waghiyi

Diomede:
Eeleengayouq Ozenna

Nome:
Frank (Boogles) Johnson

SIWO is managed by ARCUS and produced in partnership with the Alaska Ocean Observing System, the National Weather Service, Eskimo Walrus Commission, University of Alaska Fairbanks, SIKU, and local observers.





of local observations

85



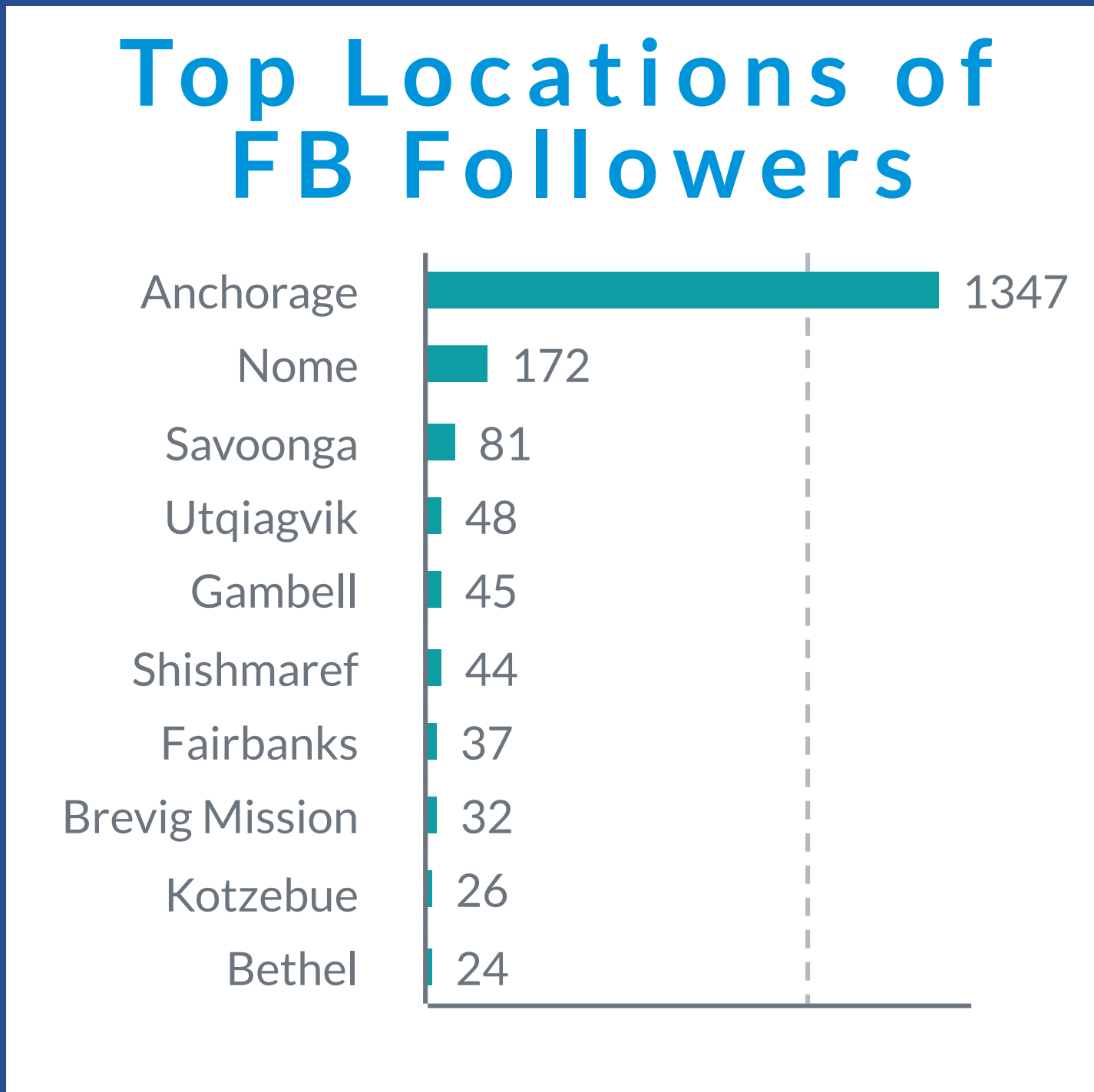
of Facebook Followers

2,869



of Weekly Reports in 2023 (29 March-28 June)

14



2024 Sea Ice for Walrus Outlook Partners Workshop

On July 12–13, 2024, Sea Ice for Walrus Outlook (SIWO) partners gathered in Nome, Alaska, for a two-day workshop—the second in-person meeting since the program began in 2010. Fourteen participants, including local observers, Indigenous Knowledge holders, and program partners, came together to strengthen relationships, reflect on the 2024 season, and plan for SIWO’s future.

The 2024 season saw record engagement, with increased observations and participation enabled by Starlink satellite internet. Partners discussed integrating video-based reports in 2025 to enhance Knowledge-sharing, engage younger hunters, and adapt to improved connectivity. Workshop outcomes include plans for a 15-year synthesis paper and a community outreach video to highlight SIWO’s lessons and successes.

Looking ahead, SIWO will provide higher-resolution satellite imagery, expand youth engagement, and continue to serve as a bridge between Indigenous Knowledge and scientific observations. ARCUS is seeking new funding to sustain this vital program and its partnerships into 2025 and beyond.



2024 ENGAGEMENT HIGHLIGHTS

ARCUS regularly serves an important facilitation role for collaborative research endeavors seeking to engage participants across institutions, sectors, disciplines, cultures, geographic locations, and/or career levels.

Sea Ice Prediction Network - Phase 2 (SIPN2)

SIPN2 activities aim to improve Arctic sea-ice forecasts using a multidisciplinary approach that includes modeling, new products, data analysis, and scientific networks.

- ARCUS' role in SIPN2 includes strategic planning, project management, networking, and outreach.
- A key activity of SIPN2 is the Sea Ice Outlook, with reports in June, July, and August containing a variety of perspectives on Arctic sea ice—from advanced numerical models to qualitative perspectives from citizen scientists. In 2024, 95 predictions were contributed to the effort by groups from around the world.



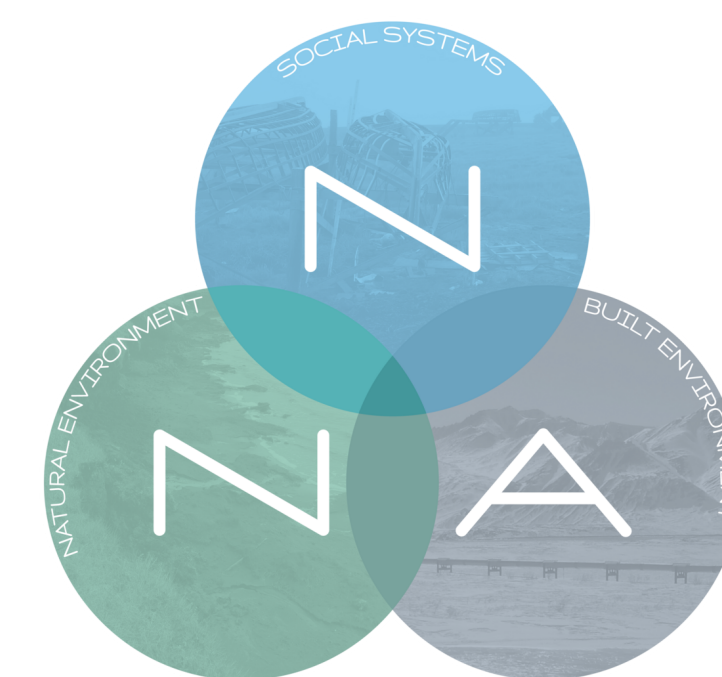
More information: <https://www.arcus.org/sipn>

Conference Sessions & Community Calls

ARCUS worked to advance Arctic research collaboration through participation in the Arctic Congress 2024 and the Navigating the New Arctic (NNA) Annual Meeting. At the Arctic Congress, ARCUS organized sessions on community and citizen science, U.S. Arctic social sciences, and network-to-network collaborations, fostering interdisciplinary dialogue and actionable outcomes.

At the NNA Annual Meeting, ARCUS hosted a session on Bering Strait Regional Research Coordination and Community Engagement, featuring presentations on regional projects, updates on Kawerak's research protocols, and discussions on NSF tribal consultation requirements. ARCUS also held follow-up community calls to sustain collaboration among researchers, Indigenous leaders, and stakeholders.

These efforts demonstrate ARCUS's commitment to inclusive research, interdisciplinary collaboration, and strengthening connections between science, policy, and Arctic communities.



2024 COMMUNITY & CITIZEN SCIENCE IN THE FAR NORTH CONFERENCE

The Community and Citizen Science in the Far North Virtual Conference, hosted by ARCUS on April 17–18, 2024, brought together researchers, educators, and community members to share and advance citizen science initiatives in Arctic and sub-Arctic regions. With over 130 registrants and 76 active participants, the two-day event highlighted the growing role of community-driven research in addressing Arctic challenges.

The conference featured 29 presentations, showcasing diverse programs focused on local observations, Indigenous knowledge, and youth-led initiatives. A pre-conference webinar in February highlighted K-12 student-led research, underscoring the importance of early engagement in scientific inquiry. Recordings of the keynotes and sessions were made publicly available, ensuring broader access and continued impact beyond the event.

Organized with the support of a diverse planning committee—including educators, community leaders, and researchers—the conference provided a platform for meaningful dialogue and knowledge exchange. It also strengthened the foundation for an active Community of Practice, with participants collaborating through ARCUS's newly launched Connect the Arctic online platform. Complementing the event, ARCUS developed a Citizen Science Project Catalog, a growing resource to connect community science initiatives and researchers. The conference and its associated tools fostered opportunities for collaboration, encouraged the integration of local knowledge with scientific research, and highlighted the value of inclusive, community-led approaches to understanding Arctic systems.

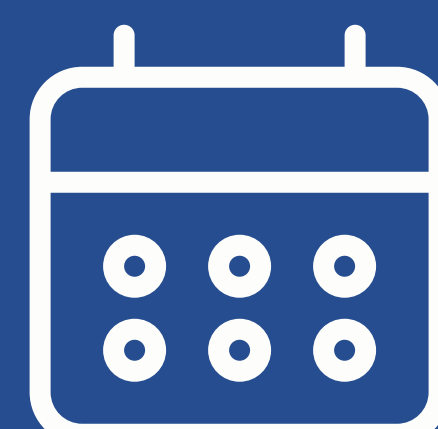
More information: <https://www.arcus.org/ccs/meetings/2024-conference>



130 Registrants



29 Presentation



**2 Day
Virtual Event**

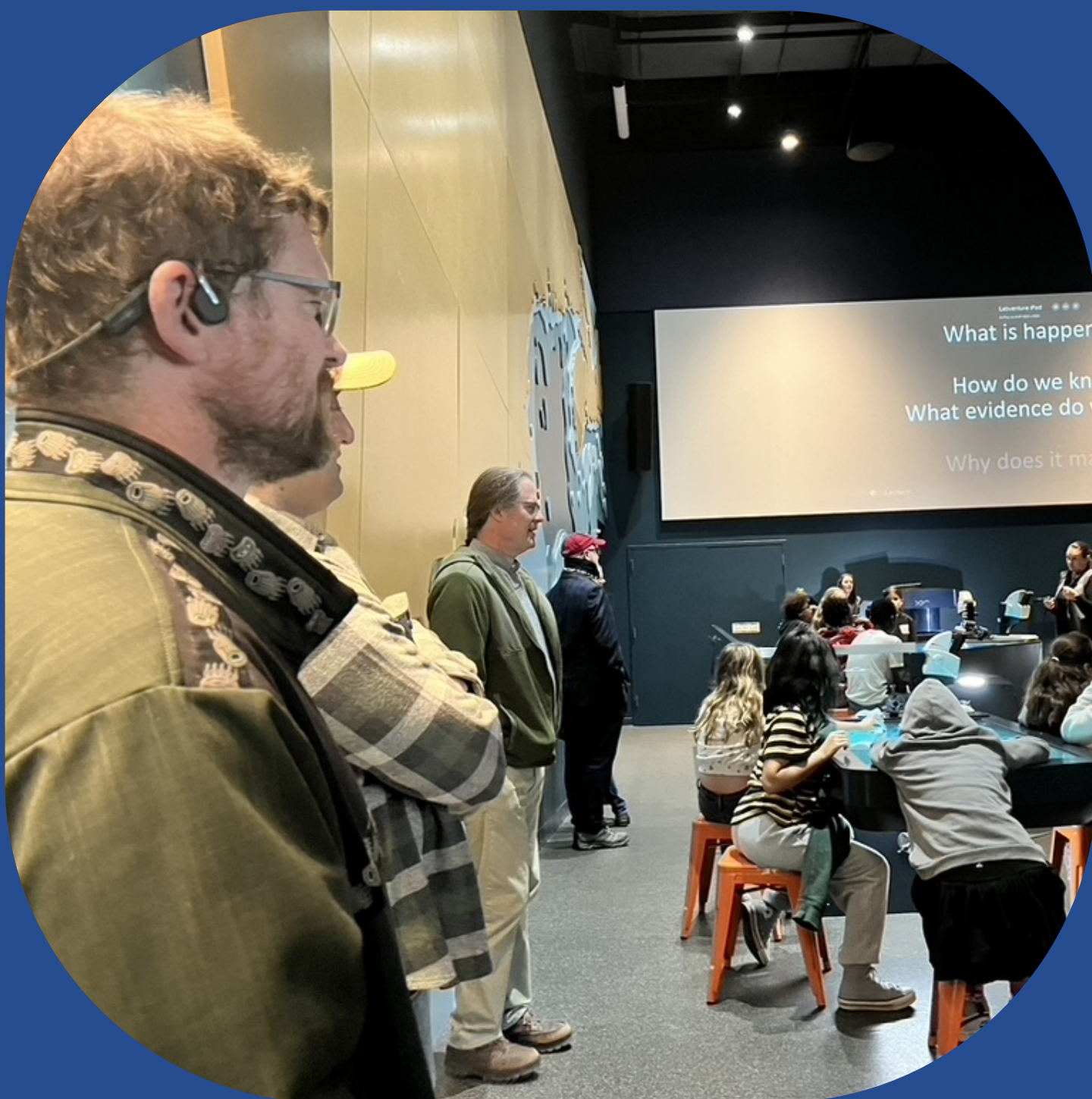
2024 BRIDGING ARCTIC GATEWAYS



The second *Bridging Arctic Gateways* workshop took place in November 2024 in Orono, Maine, continuing the collaboration between the University of Alaska Fairbanks (UAF), the University of Maine (UMaine), and ARCUS. Building on the outcomes of the 2023 workshop in Fairbanks, this event expanded its focus to engage additional regional partners and address priority themes identified in the first workshop, including climate monitoring, blue economy innovation, and higher education collaborations.

The workshop featured interdisciplinary discussions among researchers from the Alaskan Arctic and North Atlantic regions. Highlights included presentations on the blue economy and innovations in cold regions engineering, as well as thematic breakout sessions to refine collaborative strategies. The event strengthened partnerships across regions and sectors while providing actionable steps to enhance Arctic and sub-Arctic research coordination. A workshop report detailing outcomes and recommendations will be released in early 2025.

More Info: <https://www.arcus.org/meetings/2024/bridging-arctic-gateways>



2024 ARCUS ANNUAL MEETING



On Tuesday, October 29, 2024, ARCUS convened its 2024 Annual Meeting virtually, bringing together researchers, educators, policymakers, and Indigenous leaders engaged in Arctic research. The meeting served as a platform to discuss recent accomplishments, ongoing challenges, and opportunities for collaboration. Participants from nine countries and 25 U.S. states joined the discussions, representing a range of disciplines and 84 different institutions.

The event opened with remarks from ARCUS Interim Executive Director, Dr. Audrey Taylor, who welcomed attendees and highlighted ARCUS's 35-year history of supporting connections within the Arctic research community.

The meeting's agenda was structured around three panel discussions which reflected on research community challenges, opportunities, and other key topics to inform ongoing ARCUS community collaboration activities.

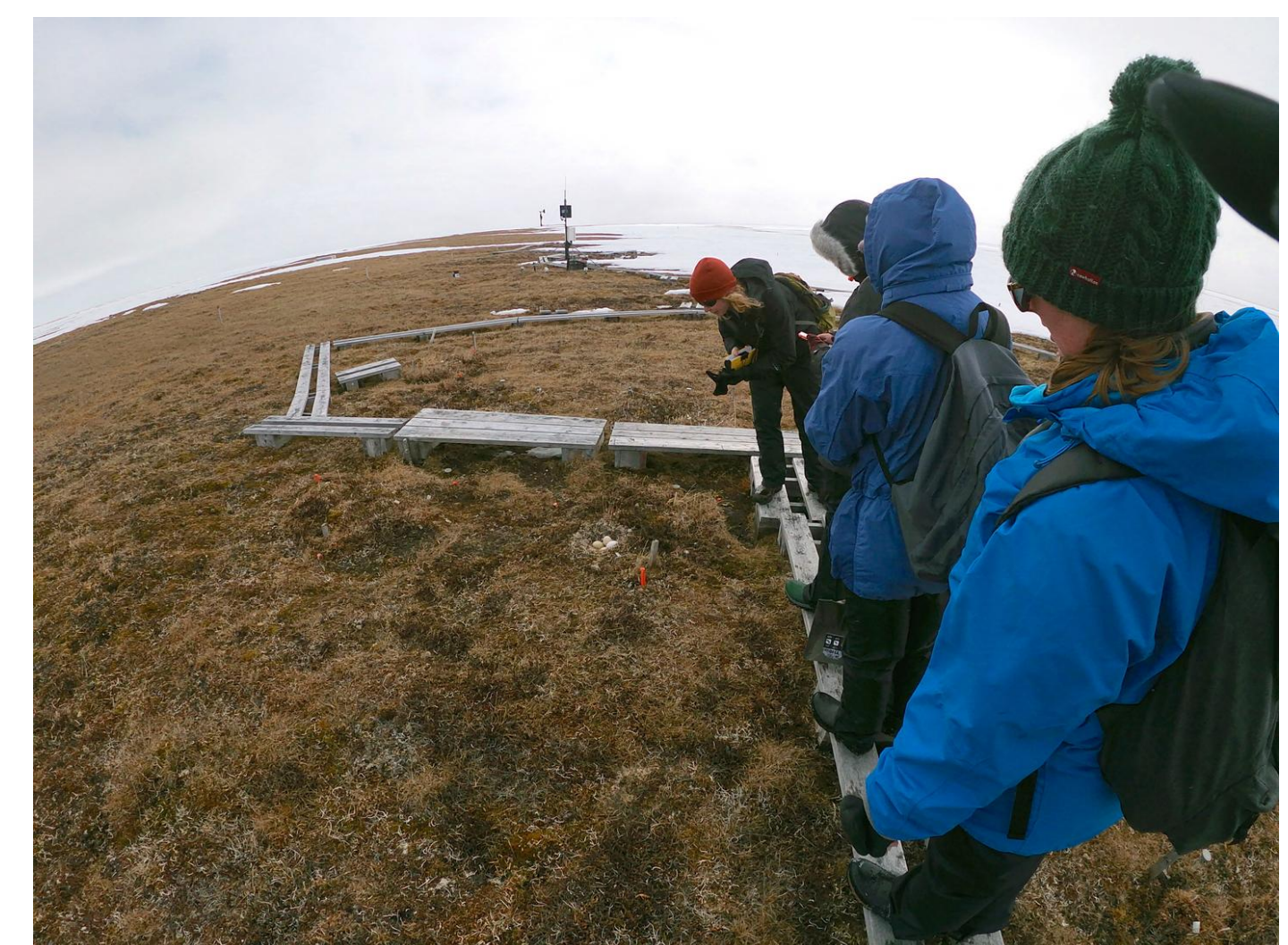
Panel 1: ARCUS Member Research Collaboration Opportunities

Moderators: Stacey Fritz (Alaska Adaptable Housing LLC) and Katherine Ginsbach (Georgetown University)

Panelists:

- **Adrian Gall** (ABR Inc.)
- **Joshua Stein** (Sandia National Laboratories)
- **Alexis Will** (World Wildlife Fund US Arctic Program)
- **Ming Xiao** (U.S. Permafrost Association)

The first panel featured diverse perspectives on current Arctic research. Panelists shared updates on their projects, highlighting new approaches, tools, and ongoing challenges in the field.



Goose nest at Toolik Field Station. Photo by Alejandra Martinez (PolarTREC 2019).

This panel provided an engaging overview of the cutting-edge research being conducted by ARCUS members and highlighted opportunities for collaboration. Discussions emphasized the transformative role of advanced technologies like satellite imagery, remote sensing, and drones in Arctic research. These tools are increasingly being used for monitoring landscape changes, assessing wildlife health, and studying permafrost degradation. AI and machine learning were identified as pivotal for analyzing large-scale datasets and enabling more precise environmental predictions.

Participants discussed the growing importance of interdisciplinary data sharing to foster collaboration across diverse scientific domains. Efforts to integrate renewable energy solutions into Arctic infrastructure were highlighted as an area of innovation, including the exploration of solar, marine, and hydrogen power systems to reduce reliance on non-renewable resources. Additionally, the potential for distributed acoustic sensing systems to monitor Arctic ice dynamics, marine traffic, and wildlife activity was examined as a promising research frontier.

2024 ARCUS ANNUAL MEETING

However, the panel raised concerns about reduced federal funding for long-term monitoring programs and the shift toward remote methodologies, which may overlook critical insights gained through fieldwork. They stressed the need to balance advanced technological tools with traditional approaches to maintain a holistic understanding of Arctic ecosystems.

Key Takeaways:

- Advanced technologies are revolutionizing Arctic research, yet they must complement on-the-ground methodologies to ensure comprehensive data.
- Interdisciplinary partnerships and consistent funding are critical for addressing the region's complex challenges.
- Innovations in renewable energy and remote sensing hold significant promise for sustainable Arctic development.

Panel 2: Bridging Arctic Research and Community Needs

Moderators: Audrey Taylor (ARCUS) and Lisa Sheffield Guy (ARCUS)

Panelists:

- **Julie Raymond-Yakoubian** (Kawerak Inc.)
- **Howard Epstein** (University of Virginia)
- **Kaare Sikuaq Erickson** (Ikaagun Engagement)
- **Heather Sauyaq Jean Gordon** (Sauyaq Solutions)
- **Marie Lowe** (University of Alaska Anchorage)

The second panel explored how Arctic research can better align with community priorities by integrating Indigenous knowledge and fostering equitable partnerships. Participants highlighted the value of co-developing research questions with local stakeholders to ensure that projects address real-world needs and deliver actionable outcomes. Successful examples included community-led monitoring programs that integrate traditional knowledge with scientific methods, creating a holistic approach to environmental management.

Discussions emphasized the importance of building local capacity through education and workforce development programs. These initiatives equip Arctic residents with the skills and tools needed to take leadership roles in monitoring and decision-making processes. The panel underscored the critical role of community-driven solutions, including the adaptation of modern scientific tools to support Indigenous practices.

Another significant topic was the integration of diverse knowledge systems to enhance resilience in Arctic communities. This includes blending climate modeling with oral histories and localized observations to provide a more comprehensive understanding of environmental changes. Geopolitical challenges, such as restricted collaboration with Russian researchers, and logistical barriers in remote areas were acknowledged as ongoing obstacles. Nonetheless, the panel celebrated the resilience and adaptability of Arctic communities and their essential role in shaping research priorities.

Key Takeaways:

- Co-produced research bridges gaps between science and community needs, ensuring mutual benefits.
- Empowering local communities through education and training fosters resilience and self-reliance.
- Integrating Indigenous knowledge with scientific approaches creates more effective and inclusive solutions.



2024 Sea Ice for Walrus Outlook observers meeting in Nome, AK. Photo by Joed Polly.

2024 ARCUS ANNUAL MEETING

Panel 3: Strengthening the U.S. Arctic Research Network

Moderators: Victoria Herrmann (Arctic Institute) and Sara Morris (NOAA GML)

Panelists:

- **David Cairns** (Texas A&M University)
- **Katharine Duderstadt** (University of New Hampshire)
- **Johanna Ikävalko** (University of Lapland Arctic Centre)
- **Anthony L. Russell** (U.S. Coast Guard Academy)



The third panel focused on strategies to create a cohesive Arctic research network in the U.S., particularly in preparation for the upcoming International Polar Year (IPY). Discussions highlighted the benefits of multi-agency research hubs that pool resources and streamline funding. Participants explored ways to reduce redundancy by consolidating efforts across institutions, enhancing collaboration, and ensuring efficiency in addressing Arctic challenges.

The panel emphasized the importance of fostering international partnerships to address shared challenges, such as climate change, permafrost degradation, and biodiversity loss. These collaborations were framed as essential for leveraging global expertise and resources. The need for equitable participation across regions and stakeholders was a recurring theme, with an emphasis on ensuring inclusive access to research opportunities and knowledge-sharing platforms.

Another significant focus was the role of early-career researchers and the importance of mentorship programs to strengthen the future of Arctic science. Panelists discussed initiatives to enhance training opportunities, create robust career pipelines, and encourage the participation of underrepresented groups in Arctic research. Additionally, the integration of community priorities within national research agendas was identified as key to creating impactful, actionable science.

The session concluded with a call for unified research efforts that prioritize innovation, inclusivity, and resilience to build a stronger U.S. Arctic research network.

Key Takeaways:

- Multi-agency research hubs enhance collaboration and efficiency by pooling resources and expertise.
- International partnerships and equitable access to research opportunities are vital for addressing Arctic challenges.
- Supporting early-career researchers and integrating community priorities are essential for the future of Arctic science.

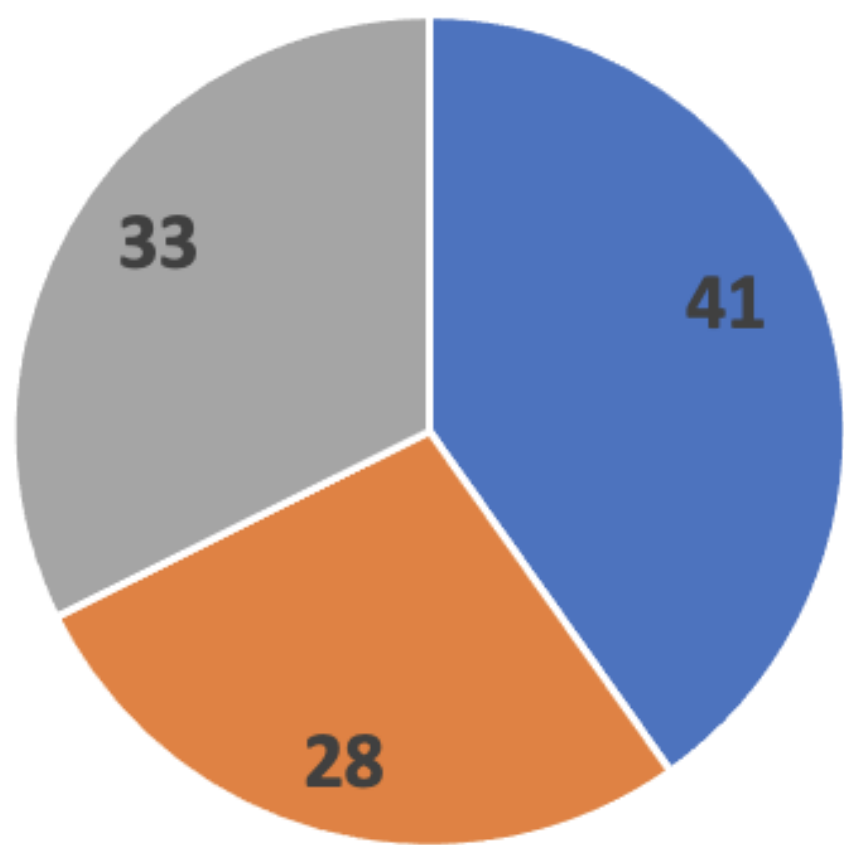
Additional Highlights & Participant Profiles

Following the panels, the meeting included updates on ARCUS board leadership and committee opportunities for 2025. Outgoing board members were recognized, and participants were encouraged to join committees such as Communications & Outreach and Proposals & Fundraising. Membership updates focused on new benefits and services, as well as calls for membership renewal and engagement. Networking sessions provided valuable opportunities for participants to connect with peers and discuss ideas, reinforcing ARCUS's role as a community collaboration hub.

More Info: <https://www.arcus.org/annual-meetings/2024>

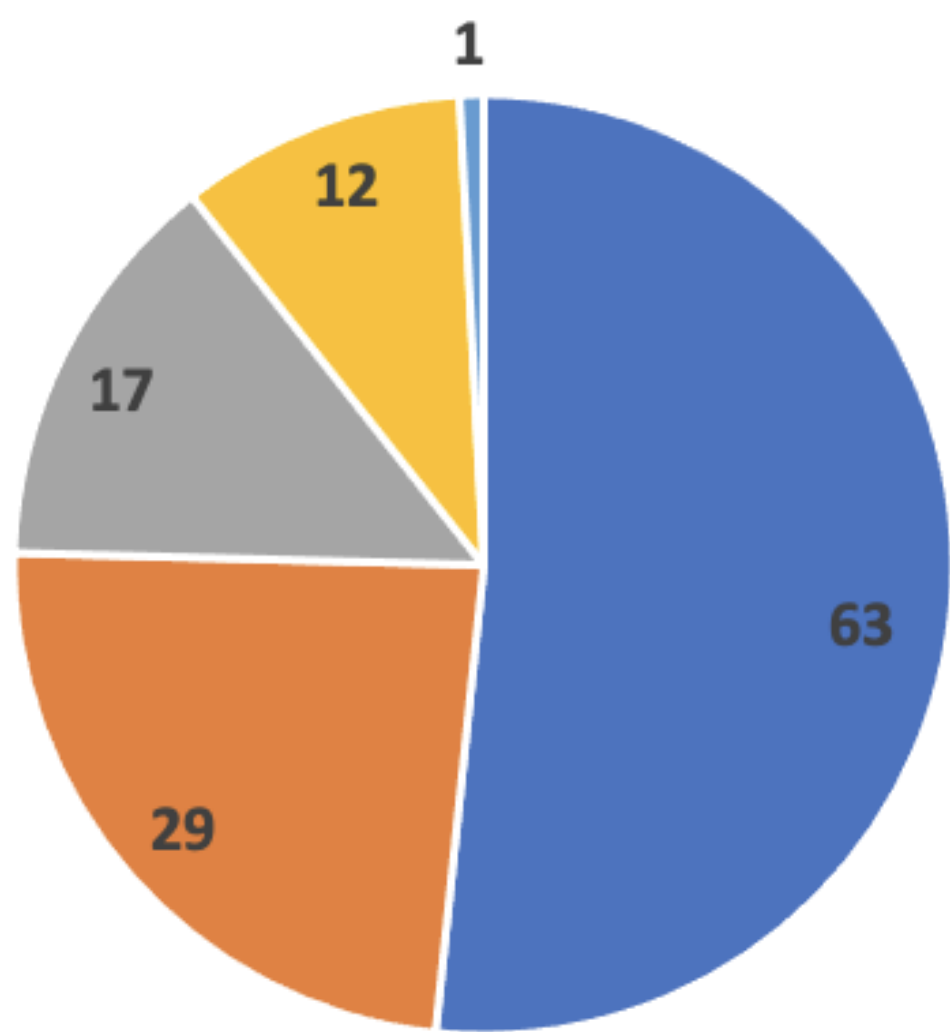
2024 ARCUS ANNUAL MEETING

Participants By Career Stage



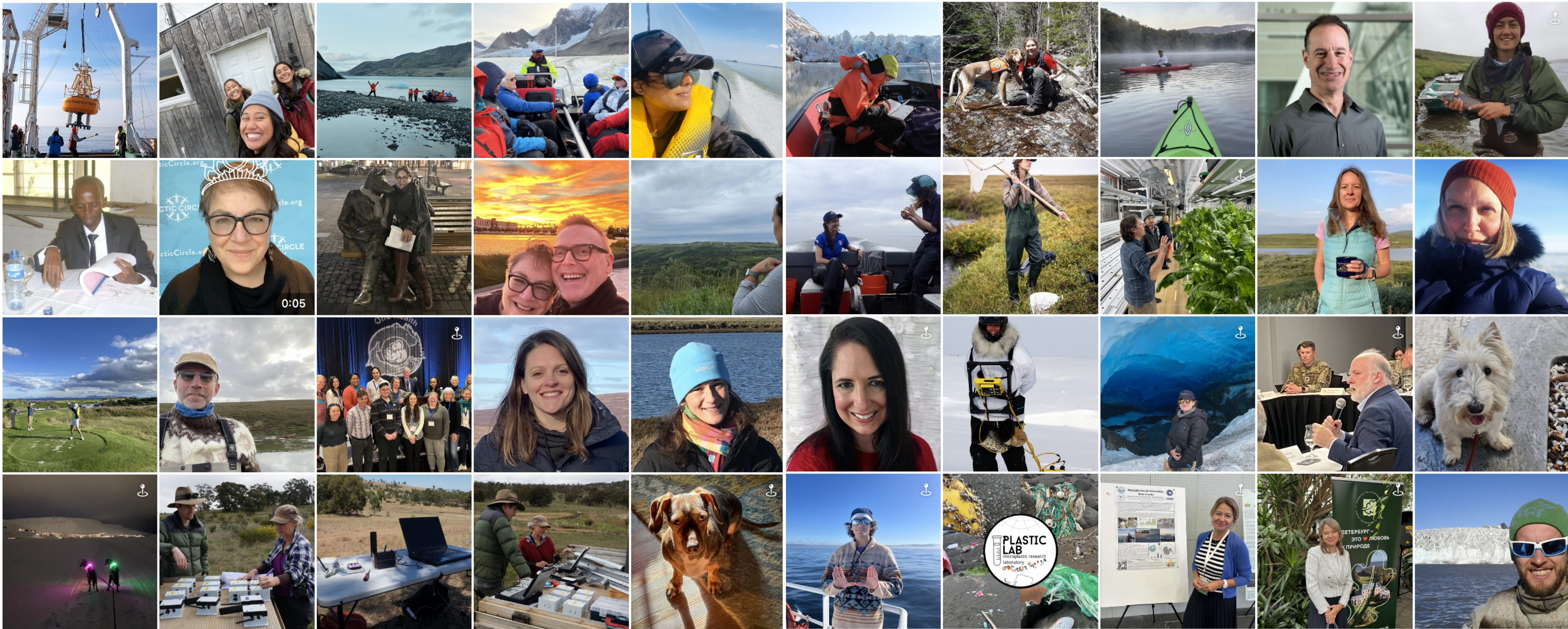
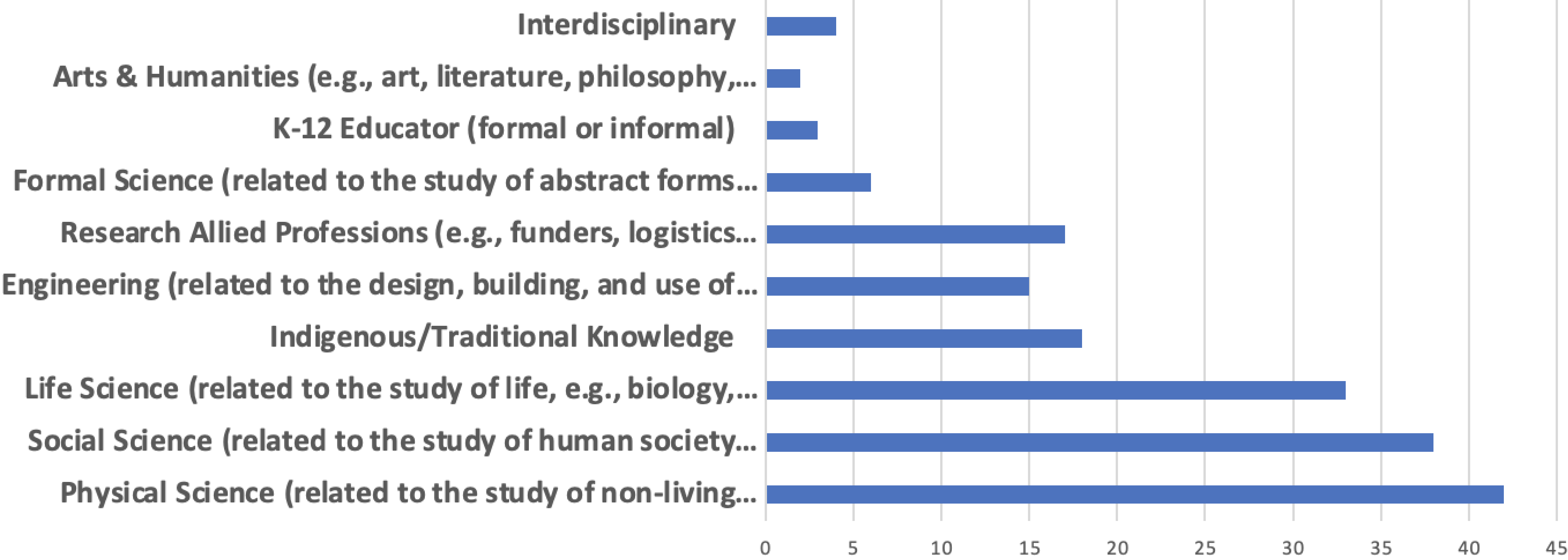
- Early Career (< 10 yrs from last degree)
- Mid Career (10 to 20 yrs from last degree)
- Established Career > 20 yrs from last degree)

Participants By Professional Sector



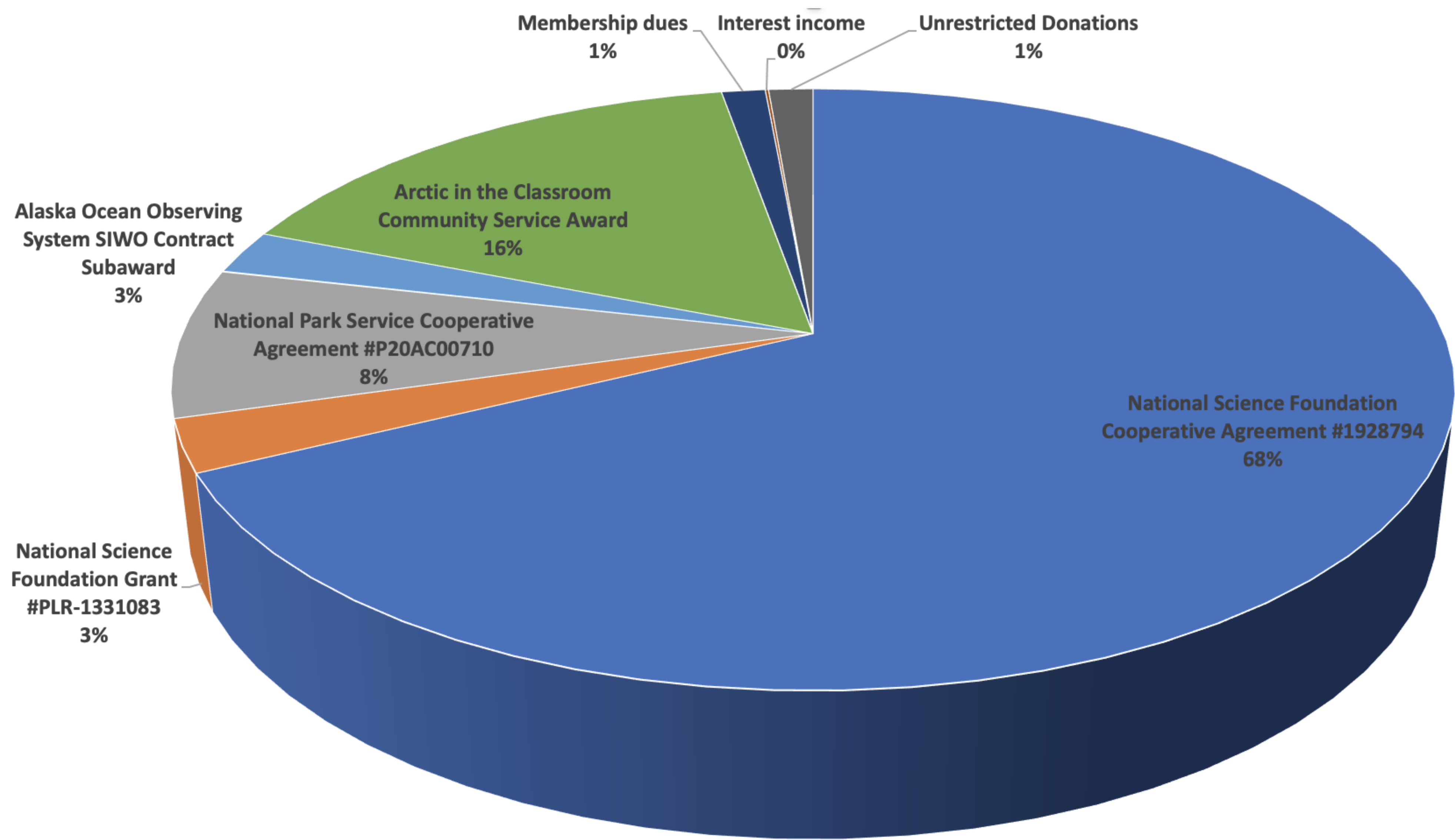
- University/Academic
- Government Agency or Institute (Including Tribal Government)
- NGO/Non-Profit Organization
- Private Sector/Industry/Consulting
- K-12 Educational Institution

Participants By Discipline



2024 FINANCIAL REPORT

Fiscal Year 2024 Revenue by Source (October 2023–September 2024)



FY24 Direct Revenue By Source

National Science Foundation Cooperative Agreement #1928794	\$	963,223
National Science Foundation Grant #PLR-1331083	\$	39,860
National Park Service Cooperative Agreement #P20AC00710	\$	114,277
International Arctic Research Center Contract Subaward	\$	602
Alaska Ocean Observing System SIWO Contract Subaward	\$	33,836
Arctic in the Classroom Community Service Award	\$	231,426
Membership dues	\$	18,726
Interest income	\$	1,394
Unrestricted Donations	\$	19,010
	\$	1,422,354

Cover Page Photo Credits:

An aerial view of a section of the Sagavanirktok River ("Sag River"). Toolik Field Station, Alaska. Photo by Josh Dugat (PolarTREC 2010)

A polar bear cub sits in front of their mother on sea ice near the R/V Akademik Fedorov in the Central Arctic Ocean. Photo by Katie Gavenus (PolarTREC 2019)

Glacial ice twists and turns through the rough terrain of Greenland, with tributary glaciers merging into larger trunk glaciers flowing slowly toward the coast. Aboard the WP-3D Orion over the Greenland Ice Sheet. Photo by Kelly McCarthy (PolarTREC 2016)

A red fox on a boardwalk at Toolik Field Station, Alaska. Photo by Kate Steeper (PolarTREC 2019)

A person takes a midnight boat ride in Ilulissat Greenland. Photo by Erin Towns (PolarTREC 2022)

