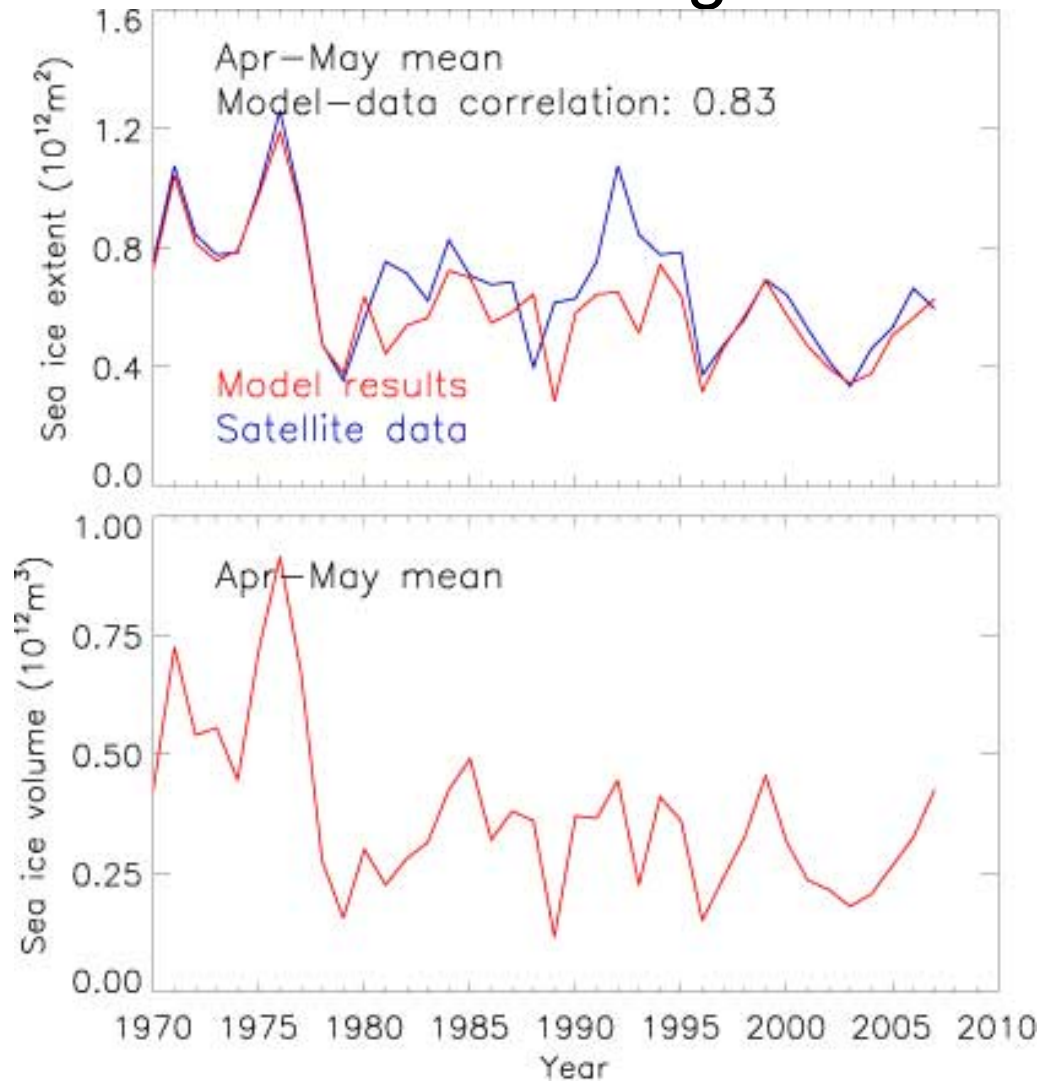


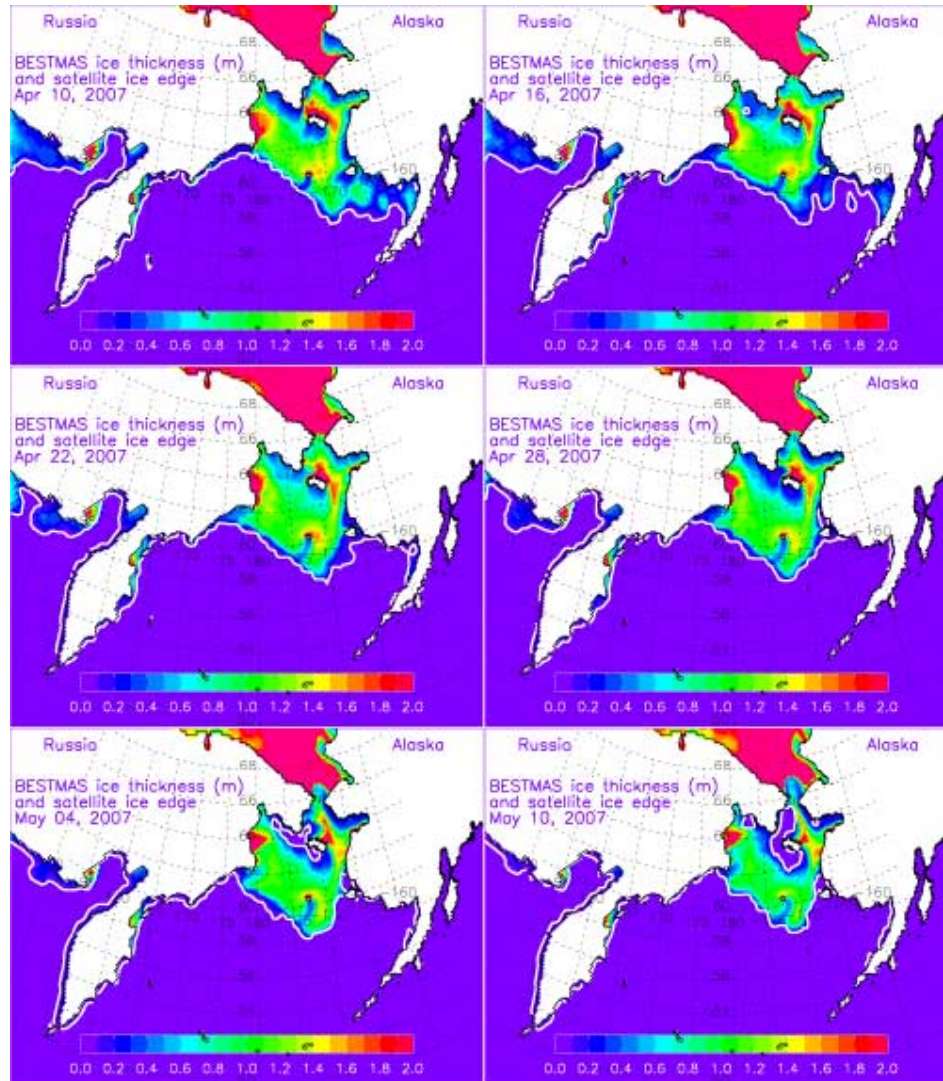
HLY0701 webinar - Sept. 6, 2007

Introduction, R. Sambrotto

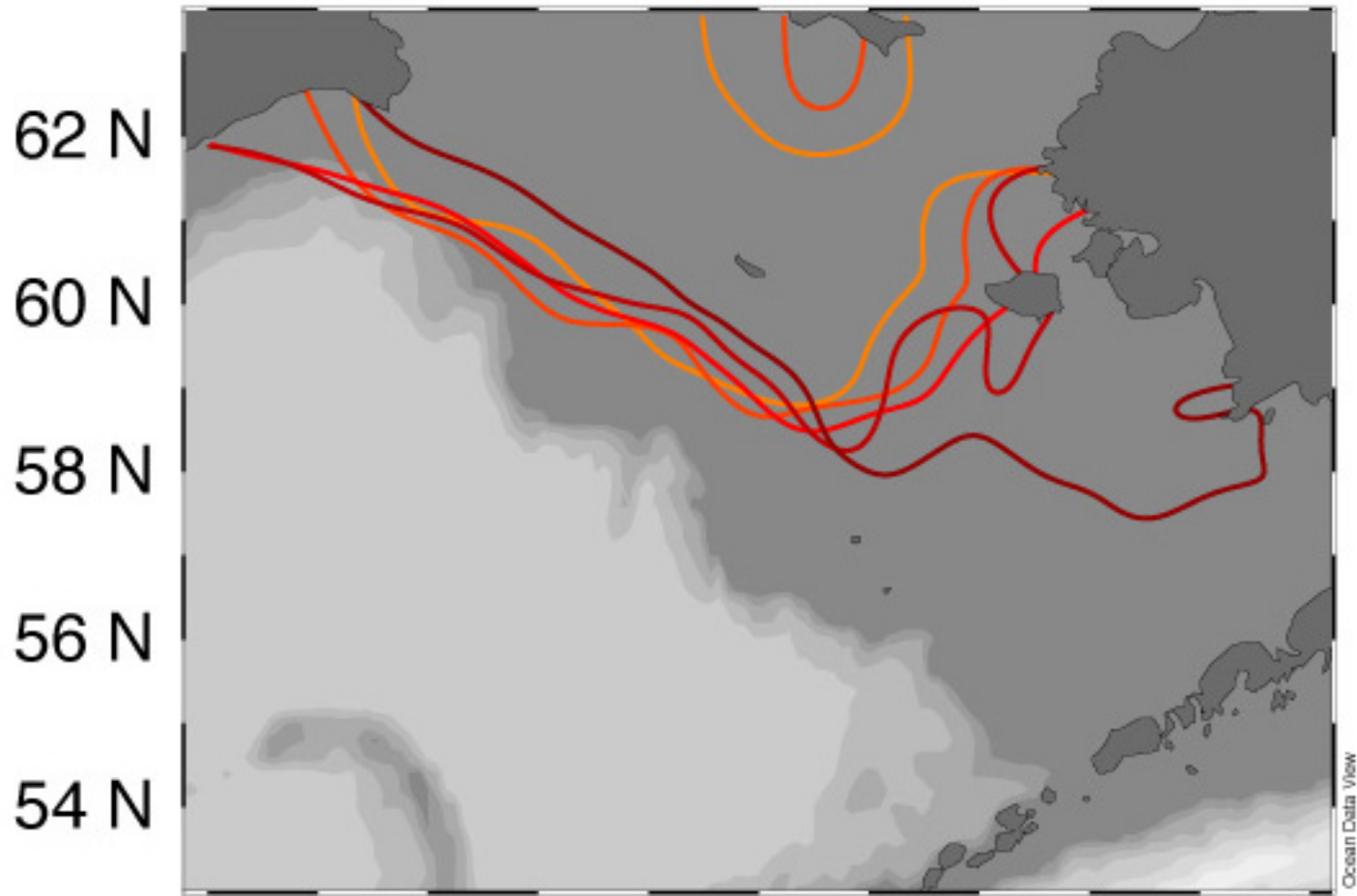
Model and satellite ice data time series; J. Zheng



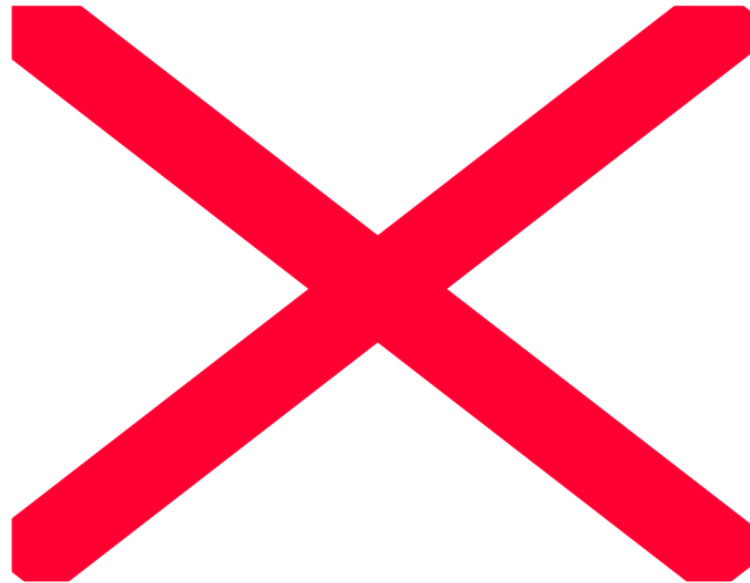
Ice extent and thickness; Bestmass - J. Zhang



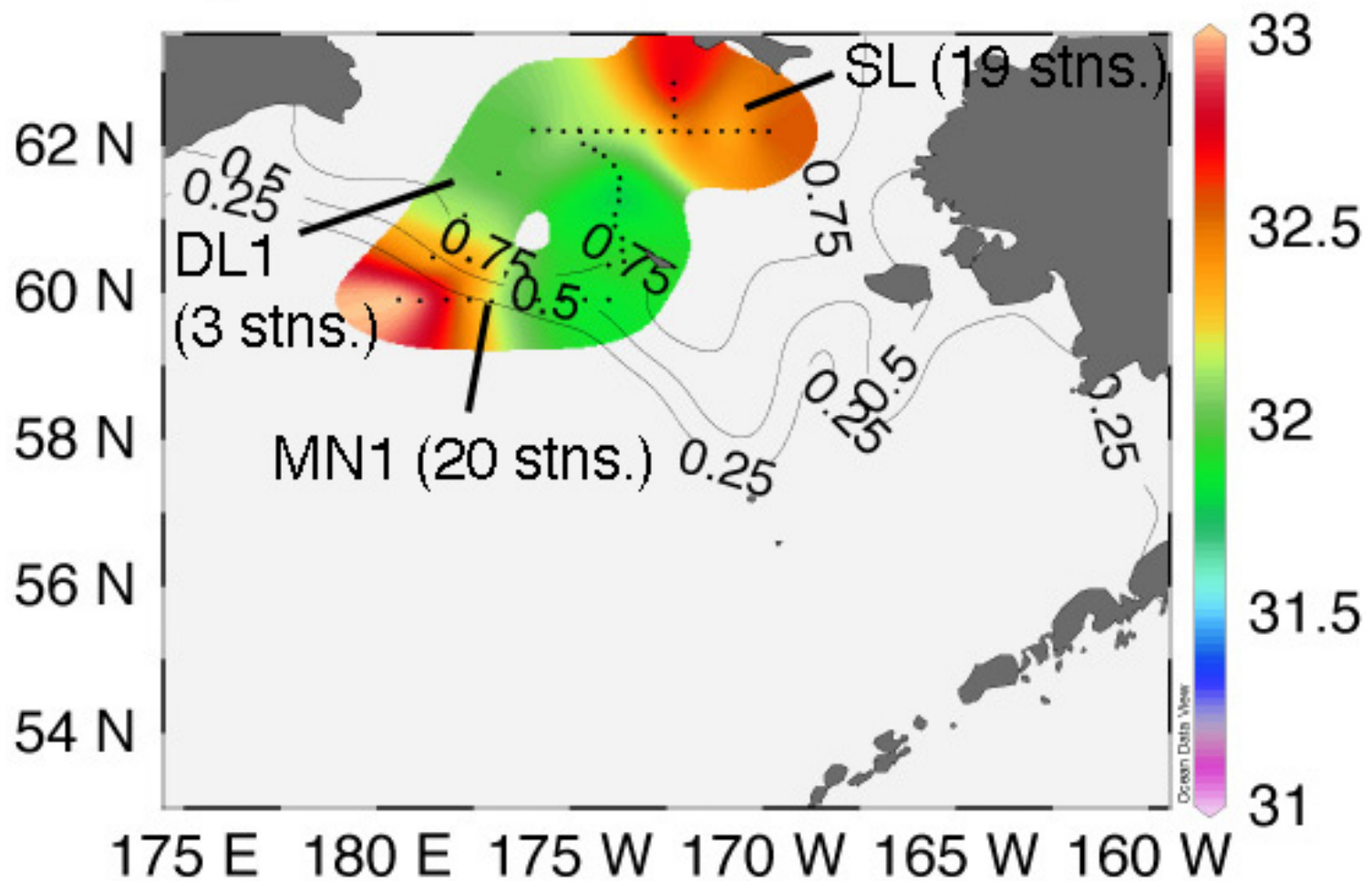
50% ice edge: April 10 - May 8



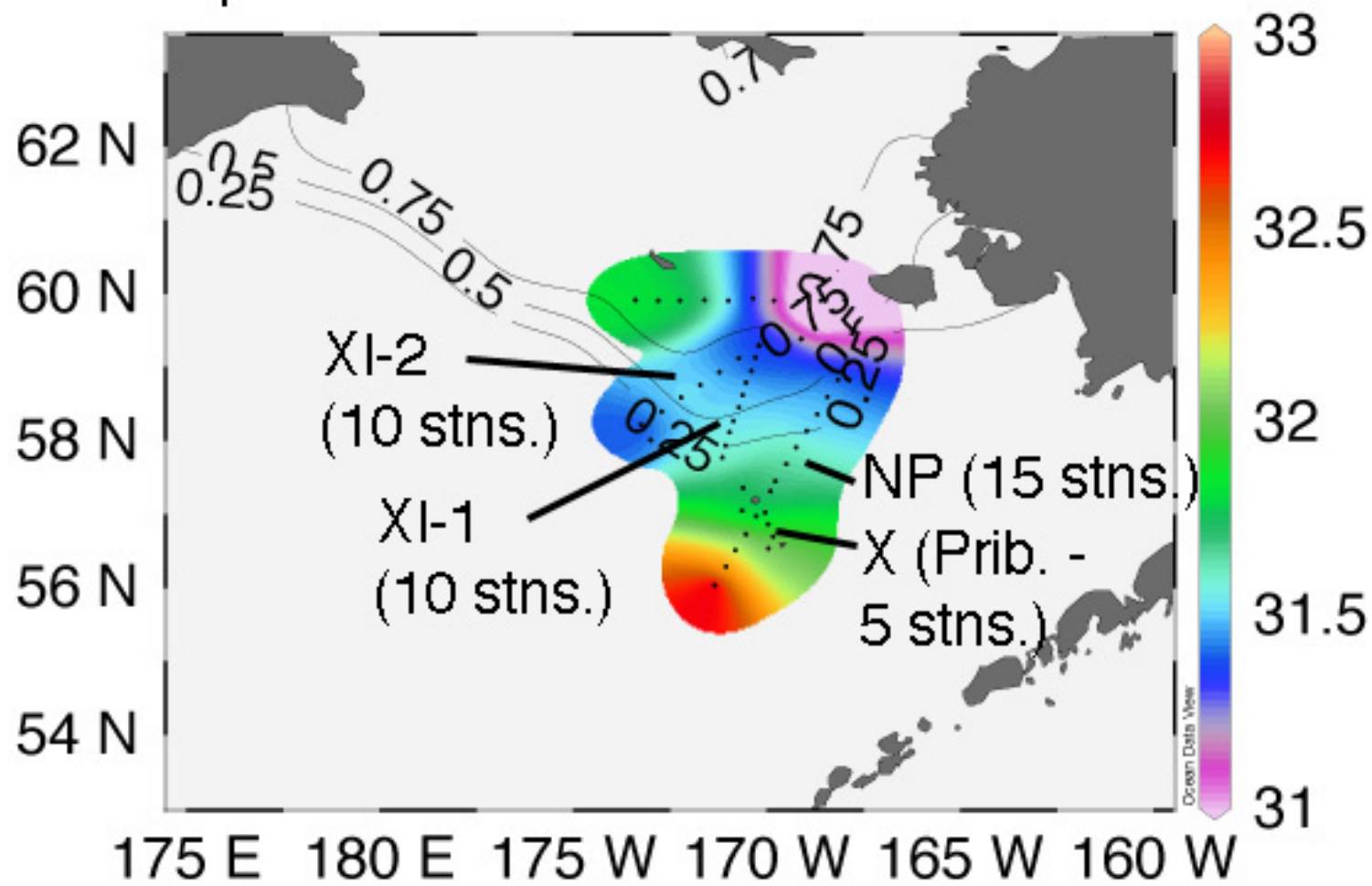
<http://www.eol.ucar.edu/projects/best/>



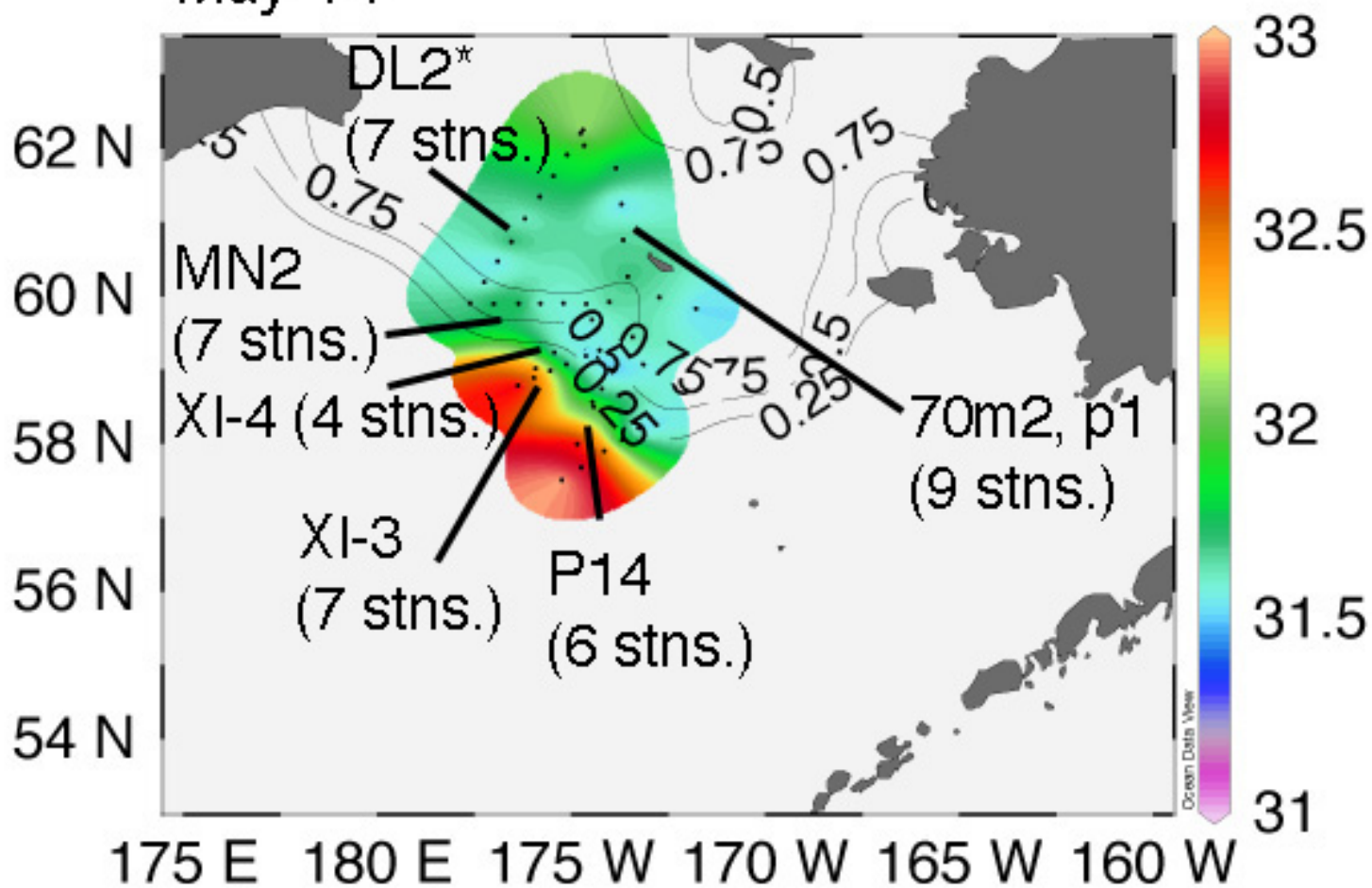
April 17-23



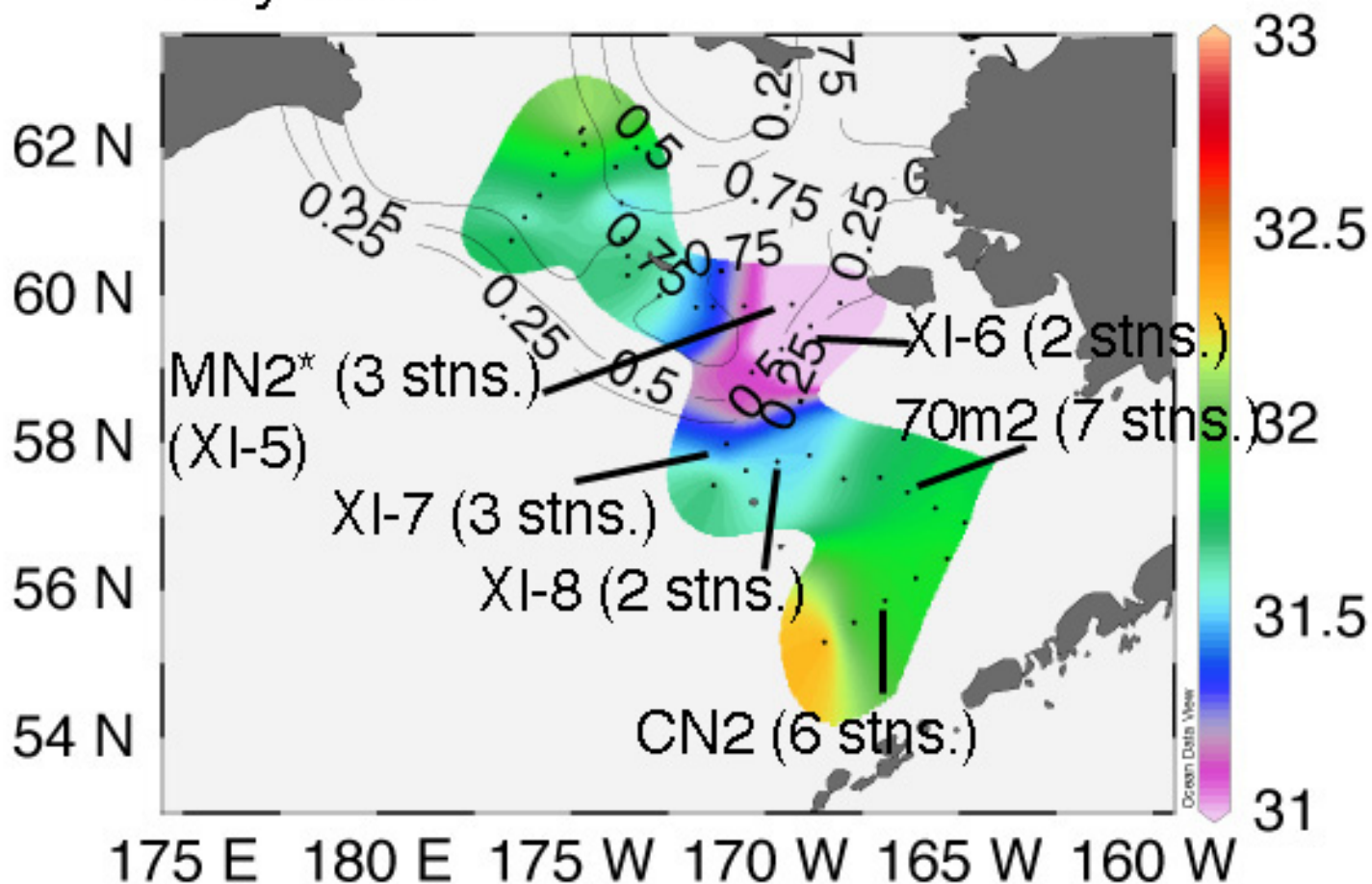
April 24-30



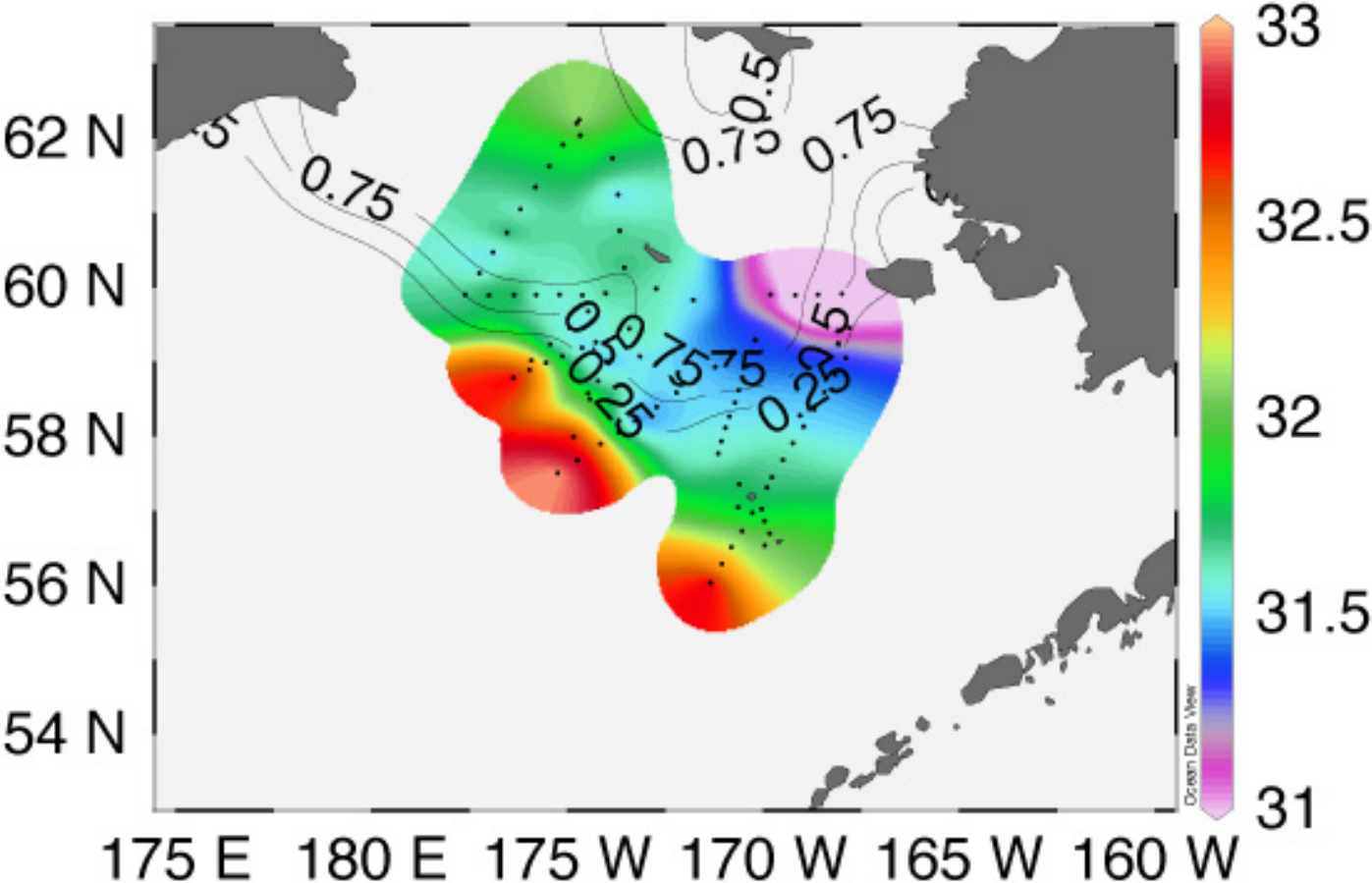
May 1-7



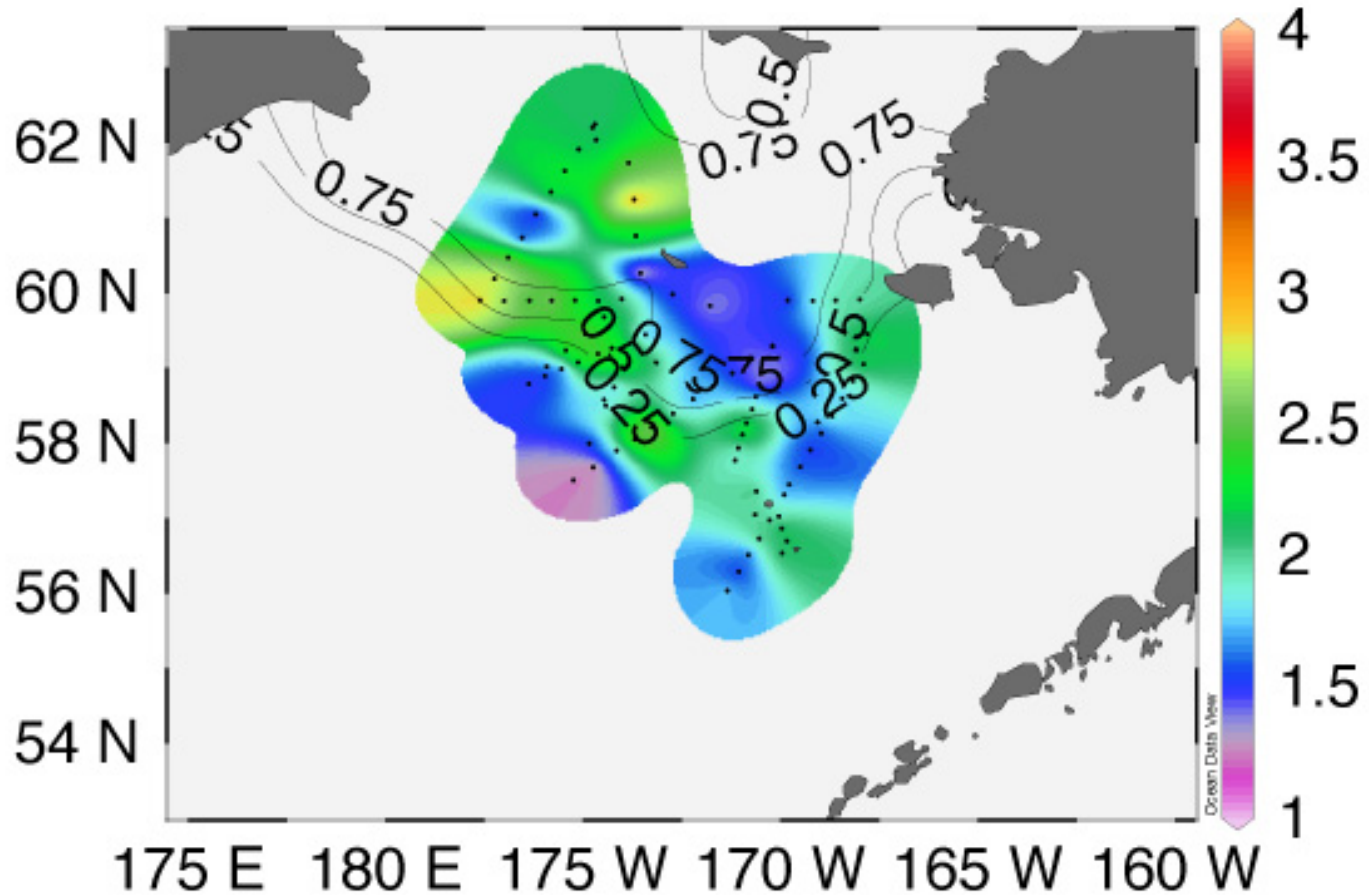
May 8-12



April 23 - May 5; salinity



April 23 - May 5; Chl (V)



April 23 - May 5; Nitrate (μM)

