



WITH ALL THE CHALLENGES AND CHANGES THE ARCTIC IS FACING THESE DAYS, IT'S CRUCIAL TO HAVE A RELIABLE SOURCE OF INFORMATION ABOUT THE REGION

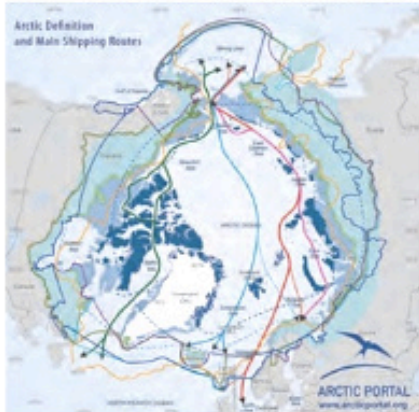
Having the best available information and data on the Arctic is key to making the right decisions about the Arctic, whether you work in politics, business, research, or the non-profit sector.

ARCTIC PORTAL: CELEBRATING 10 YEARS AS A PROMINENT ARCTIC KNOWLEDGE BROKER

Based in the heart of the Arctic in Akureyri, Iceland, for the past 10 years Arctic Portal has served as a broker of Arctic information and data. An expert in Arctic data solutions and data-sharing, Arctic Portal supports co-operation and outreach in science, education, and policymaking. It also fosters dialogue and building connections between Arctic stakeholders in all parts of the world.

Arctic Portal operates in consultation and co-operation with members of the Arctic Council and its Working Groups, as well as Arctic indigenous peoples, Arctic Council Observer states, and other important Arctic stakeholders.

© Arctic Portal/Source: Arctic Council, NSIDC, NSR Information Office



Arctic Portal is also active in international consortia, including the European Polar Board (EPB), the EU-PolarNet initiative, the Sustaining Arctic Observing Networks (SAON), the Arctic Data Committee (ADC), the University of the Arctic, the International Permafrost Association (IPA), and the China-Nordic Arctic Research Centre (CNARC).



Image of the Aurora Observatory
© Arctic Portal

ARCTIC INFORMATION, INTERACTIVE MAPS AND DATA SERVICES

Arctic Portal has developed topic-specific information, maps and data services for the Arctic, including:

- **The Global Terrestrial Network for Permafrost database:** A product of the EU-funded PAGE21 project, this database provides data on permafrost thaw depths and temperatures from around the world through comprehensive and user-friendly visualization and interpretation tools, including an interactive map.
- **The Arctic Maritime & Aviation Transportation Initiative:** An interactive database of the Circumpolar Arctic displaying visual, geographical and descriptive information about maritime and aviation infrastructure based on data collected from all eight countries in the circumpolar Arctic.
- **A series of thematic Arctic information and maps** on the Arctic Portal website: These provide visual representation of data on ice conditions, shipping, climate change, social issues, governance and other topics of interest to Arctic stakeholders. These maps are supported by sector-specific information found in the Arctic Portal Library, allowing users to explore each topic further.

INTERNATIONAL COOPERATION

Arctic Portal plays an important role in fostering co-operation between international Arctic stakeholders. Some key activities include:

- Developing co-operation with Asian partners. In addition to signing an MOU with the Korean Maritime Institute, Arctic Portal has also been active in fostering Iceland-China relations, most notably by playing an instrumental role in the establishment of the Aurora Observatory being built in Iceland, and designing the observatory's visitor centre, which will communicate to the general public about the research taking place there on Sun-Earth interactions and space weather.
- Maintaining strong partnerships with the US, Canada, Russia and Arctic indigenous peoples' organizations, through involvement in projects such as the Northern Forum and the development of an Arctic Renewable Energy Atlas.



Arctic Portal Director Halldór Jónhannsson and Head of the Korean Maritime Institute Dr. Sung-Gwi Kim signing a memorandum of understanding
© KMI