



# Land Change Science Program U.S. Geological Survey

**Jonathan H. Smith Ph.D.**  
**Program Coordinator**  
**[jhsmith@usgs.gov](mailto:jhsmith@usgs.gov)**

# Land Change Science Program

## *Program Objective*

Conducts long-term studies of the land cover and disturbance histories of the United States and selected overseas areas in order to determine the reasons for and the impacts of land-surface change.

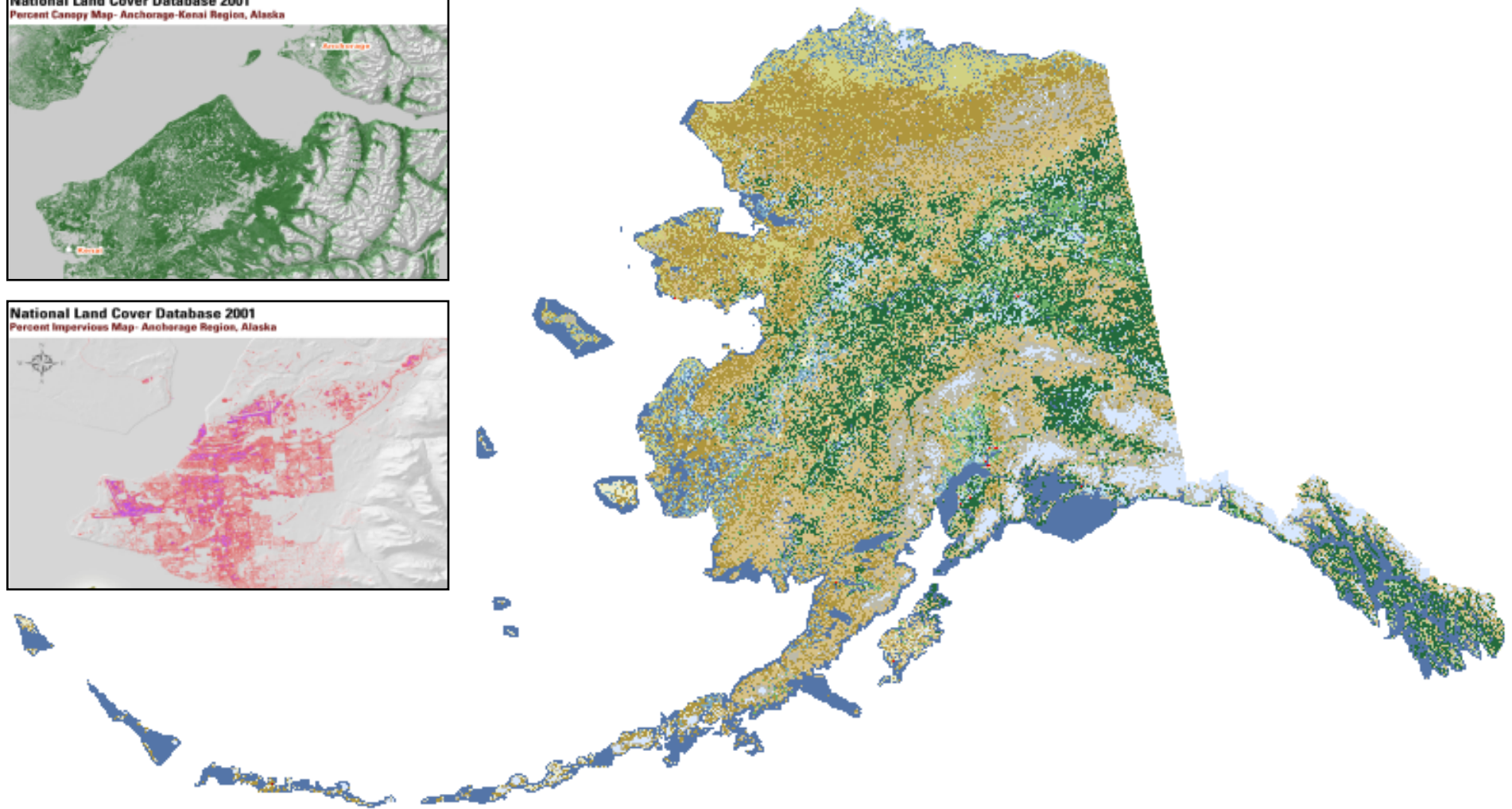
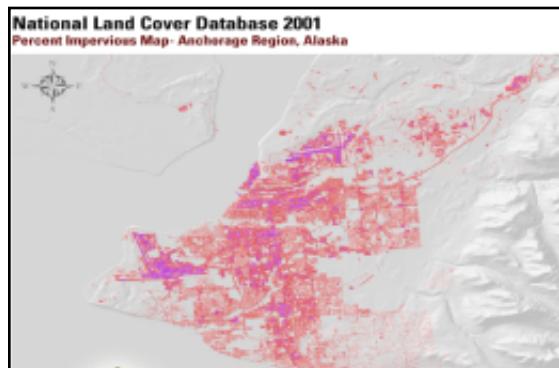
Seeks to answer:

- What kinds of changes are occurring and why?
- What are the impacts of these changes on the environment and society?
- How can LCS research findings best be used for making decisions on resource use and allocation, as well as in reducing risk and vulnerability to natural hazards?





# National Land Cover Database (NLCD) AK mapped 2001 and 2011

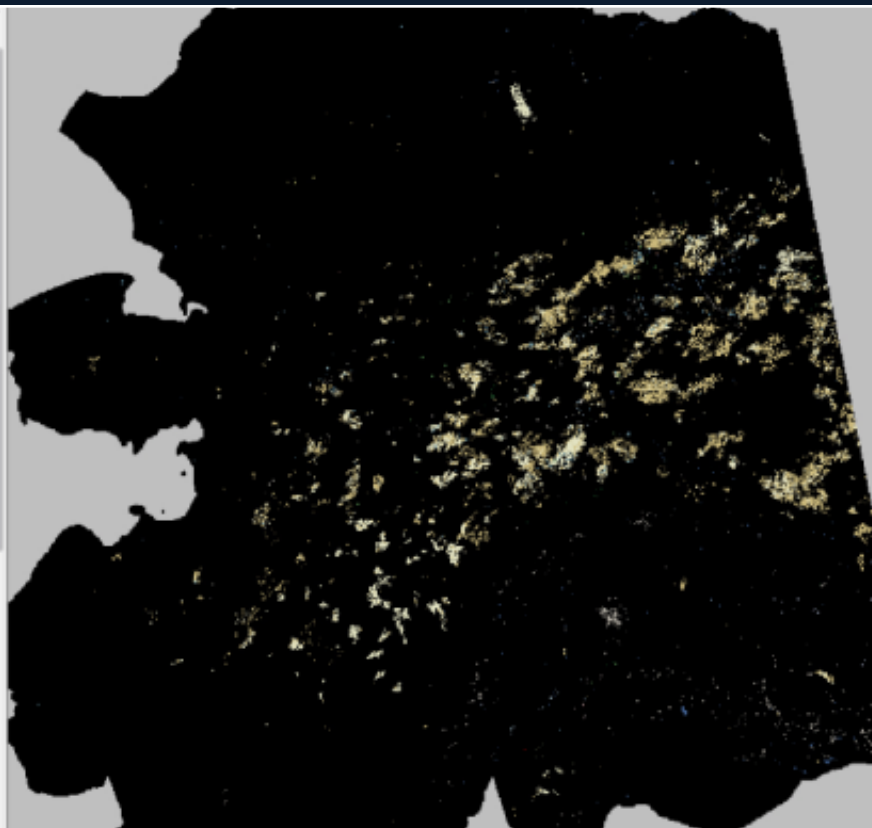


# Alaska NLCD 2001 - 2011 Change: Interior Wildfires

---



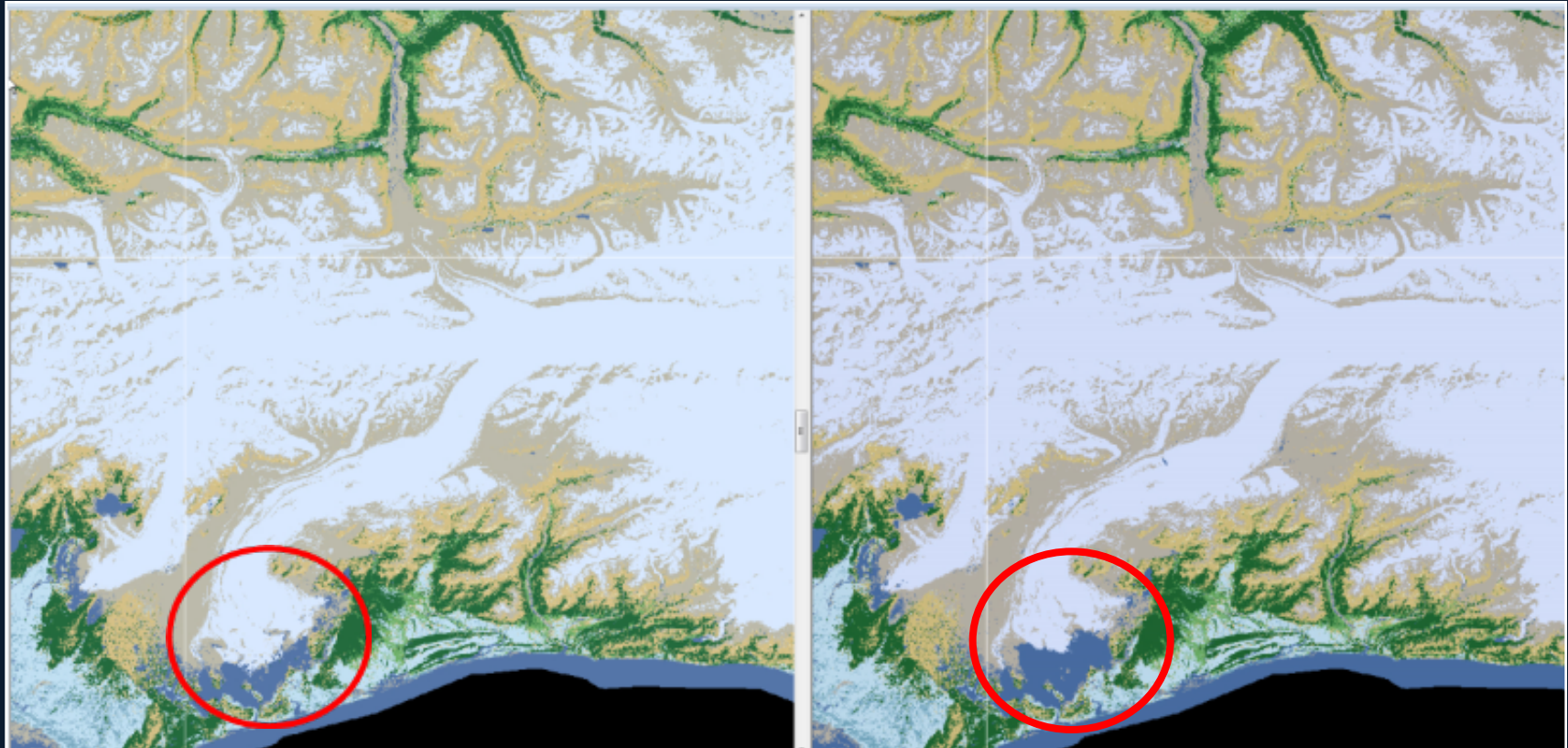
2011 Land Cover



New Shrub Areas

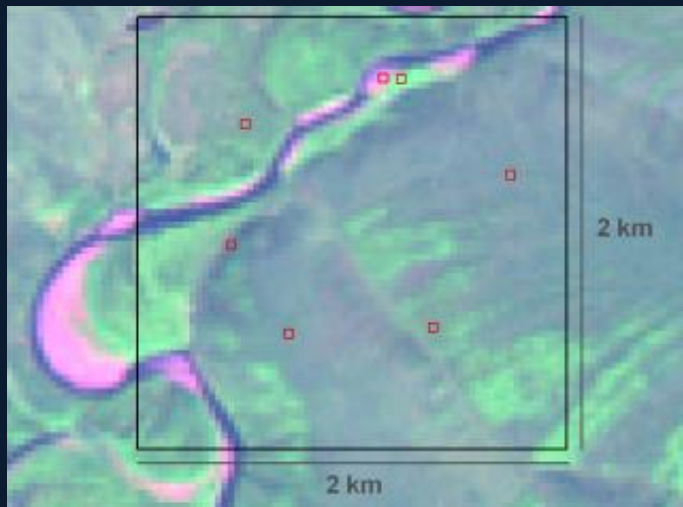
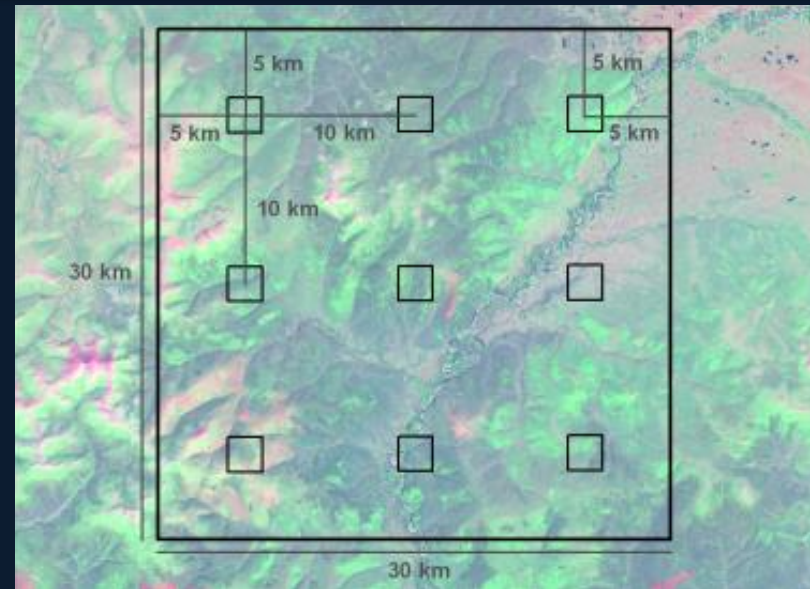
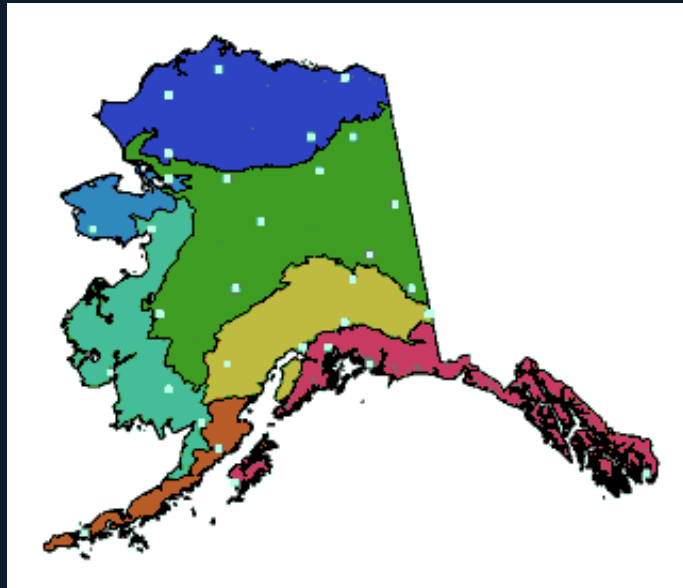


# Alaska NLCD 2011: Snow/Ice Change



Receding Glacier

# AK NLCD Rigorous Accuracy Assessment



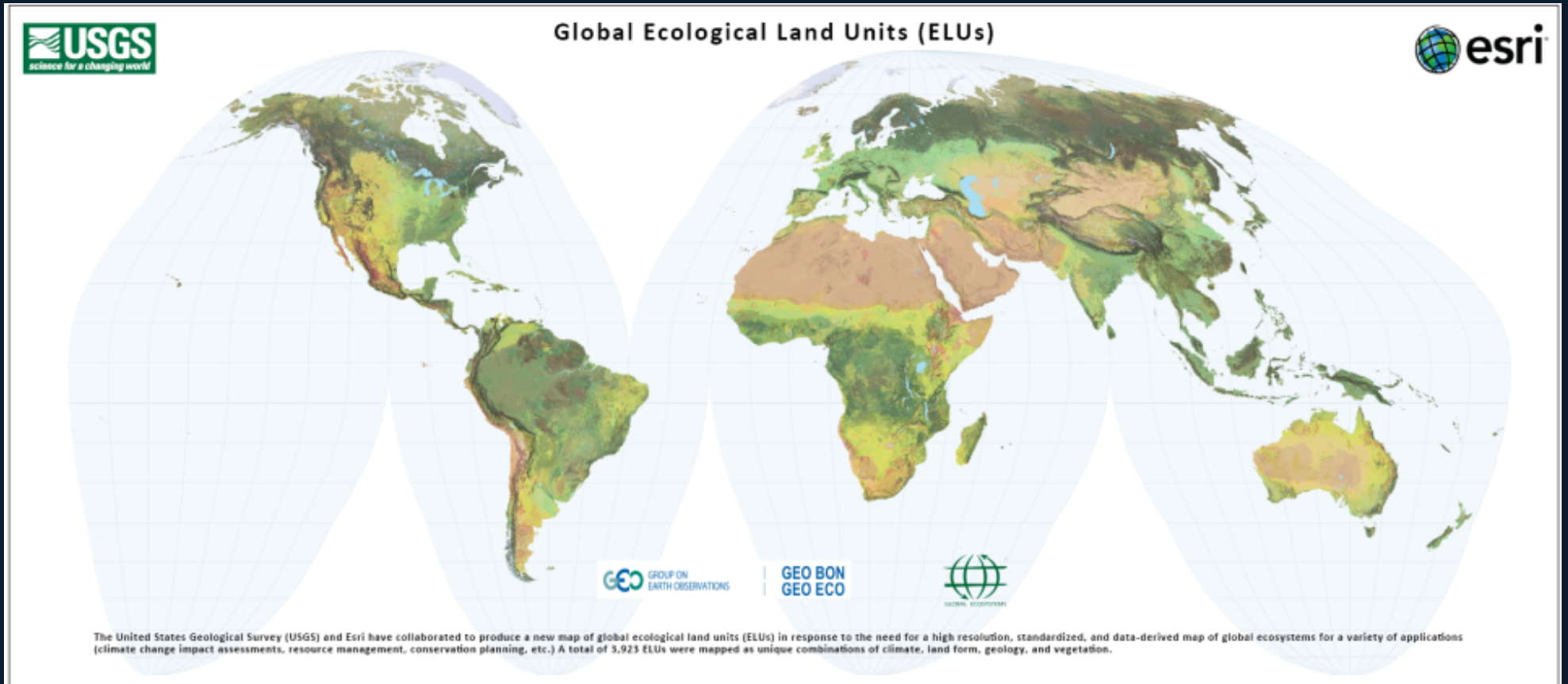


# North American Land Change Monitoring System (NALCMS)

- Tri-national collaboration of five federal government institutions and Commission of Environmental Cooperation
- Launched in 2006
- Long-term goal: develop an operational system for monitoring land cover change for the continent



# Global Ecosystem Mapping





# AK LandCarbon Project Biological Carbon Sequestration



## Baseline and Projected Future Carbon Storage and Greenhouse-Gas Fluxes in Ecosystems of Alaska



Professional Paper 1826

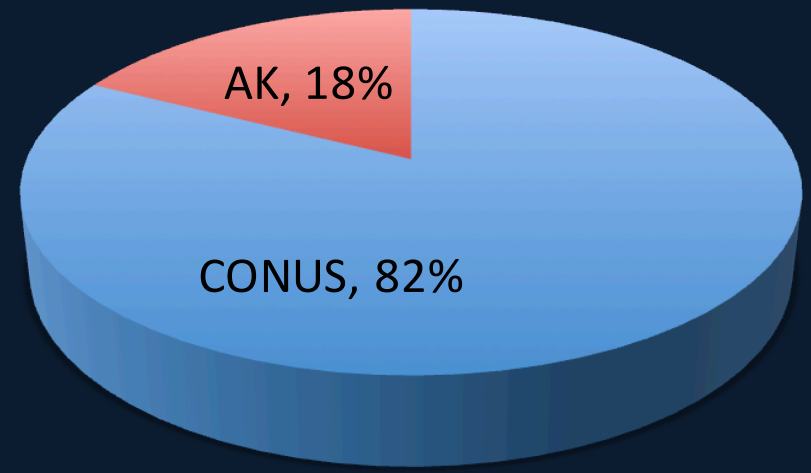
U.S. Department of the Interior  
U.S. Geological Survey



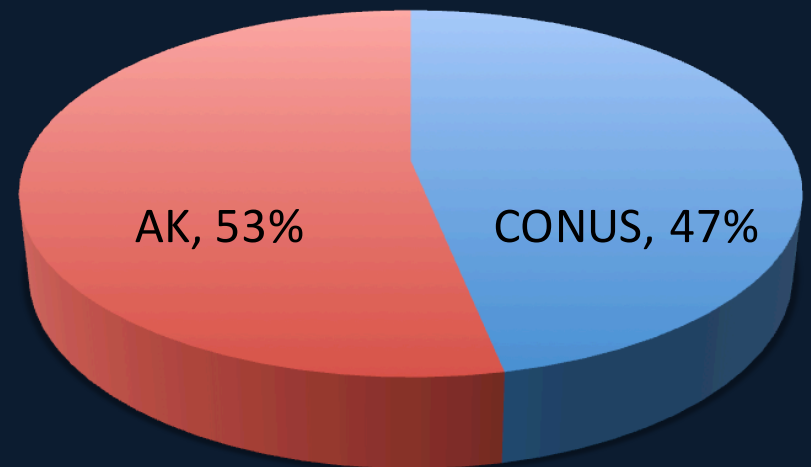
# How much carbon is stored in AK?



## Total area



## Total carbon stock

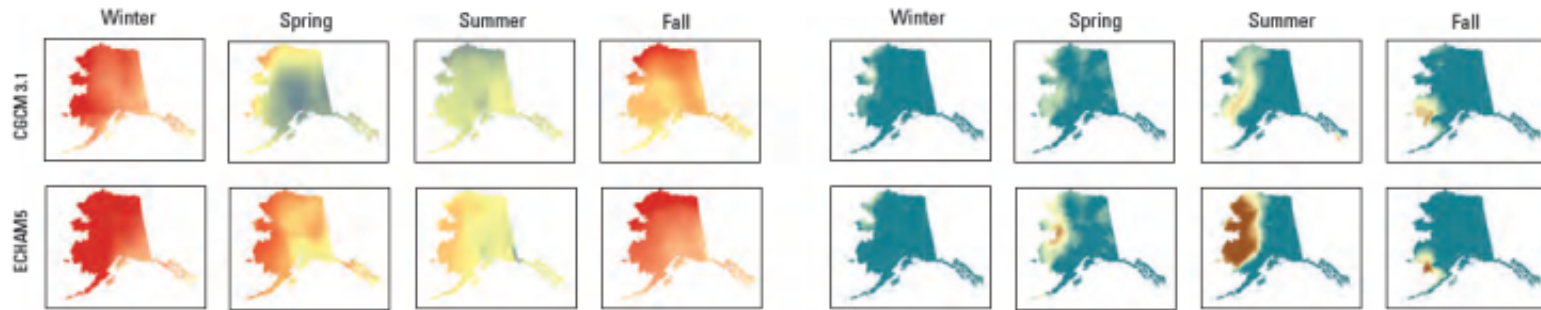




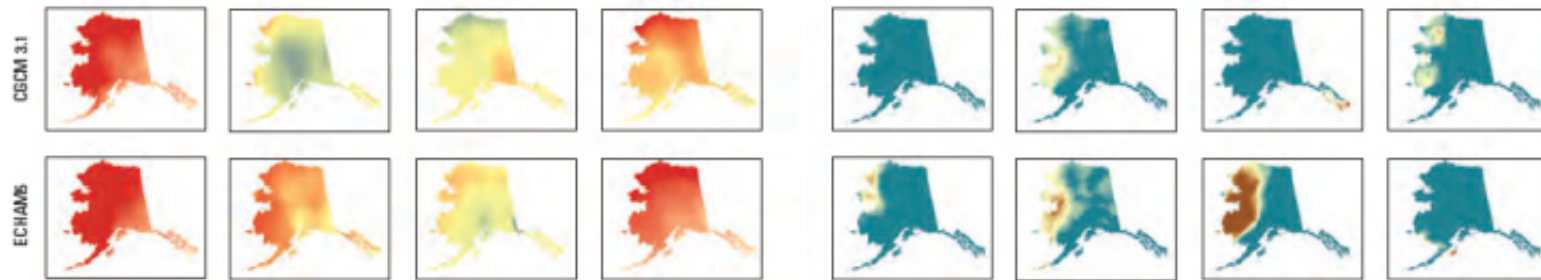
### Temperature change

### Precipitation change

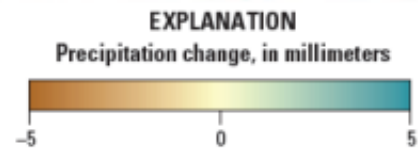
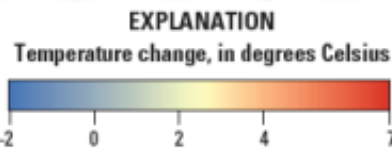
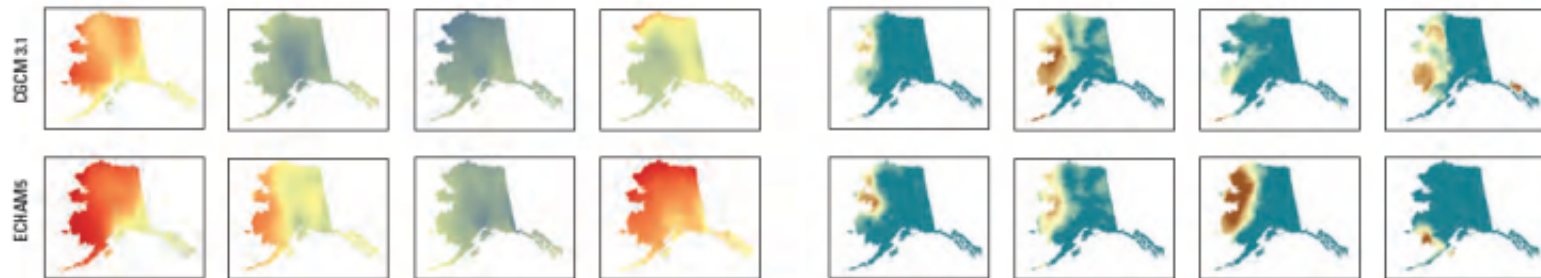
#### Scenario A1B



#### Scenario A2



#### Scenario B1



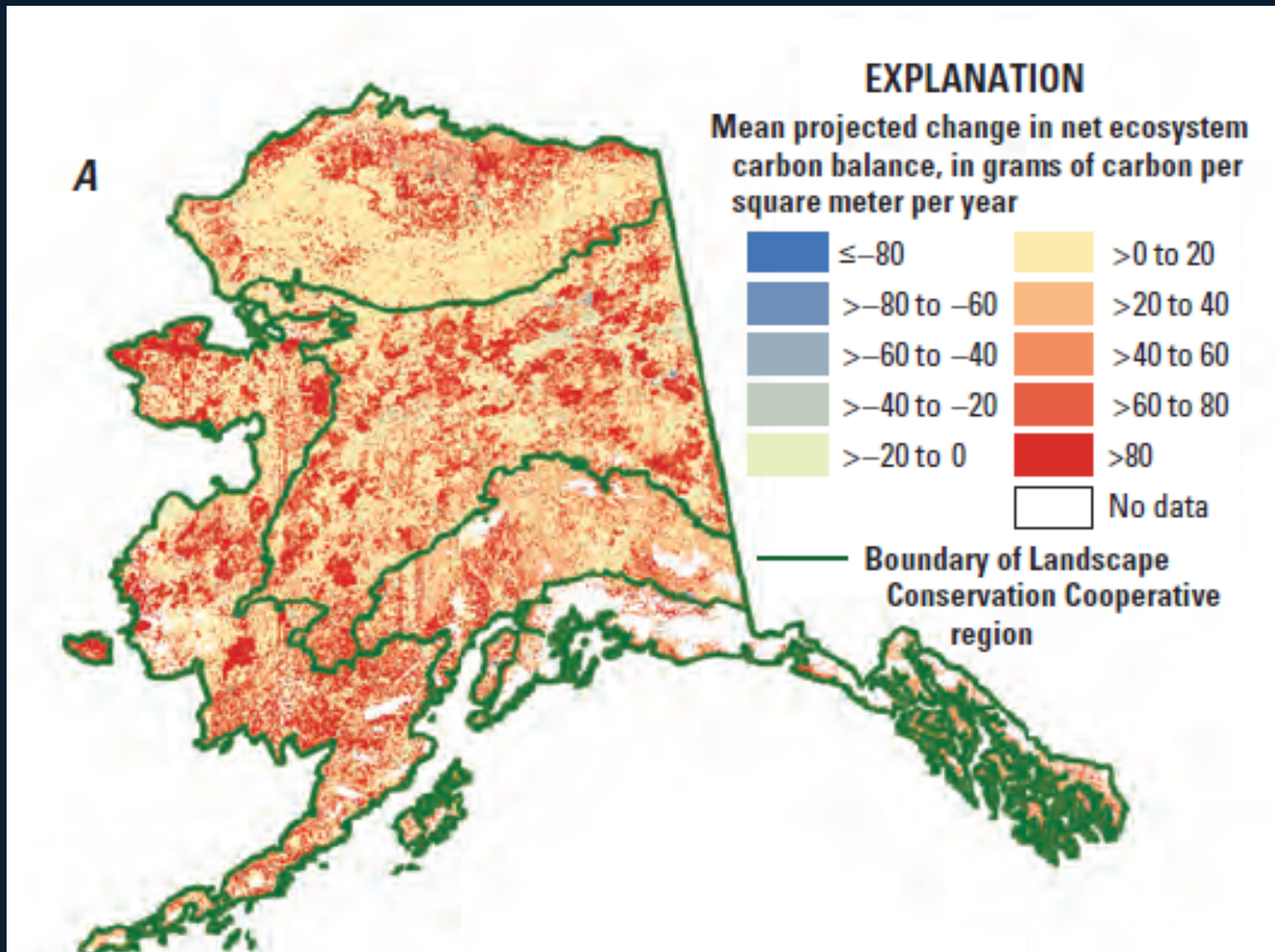
**Table 2.10.** Summary of fire activity for the Northwest Boreal Landscape Conservation Cooperative North simulated for the last decades of the historical period (2000–2009) and the projection period (2090–2099).

[The 50th (median) and 95th percentiles were computed across 200 model replicates for each future climate simulation. Details regarding the models and scenarios shown can be found in table 2.9. km<sup>2</sup>, square kilometer]

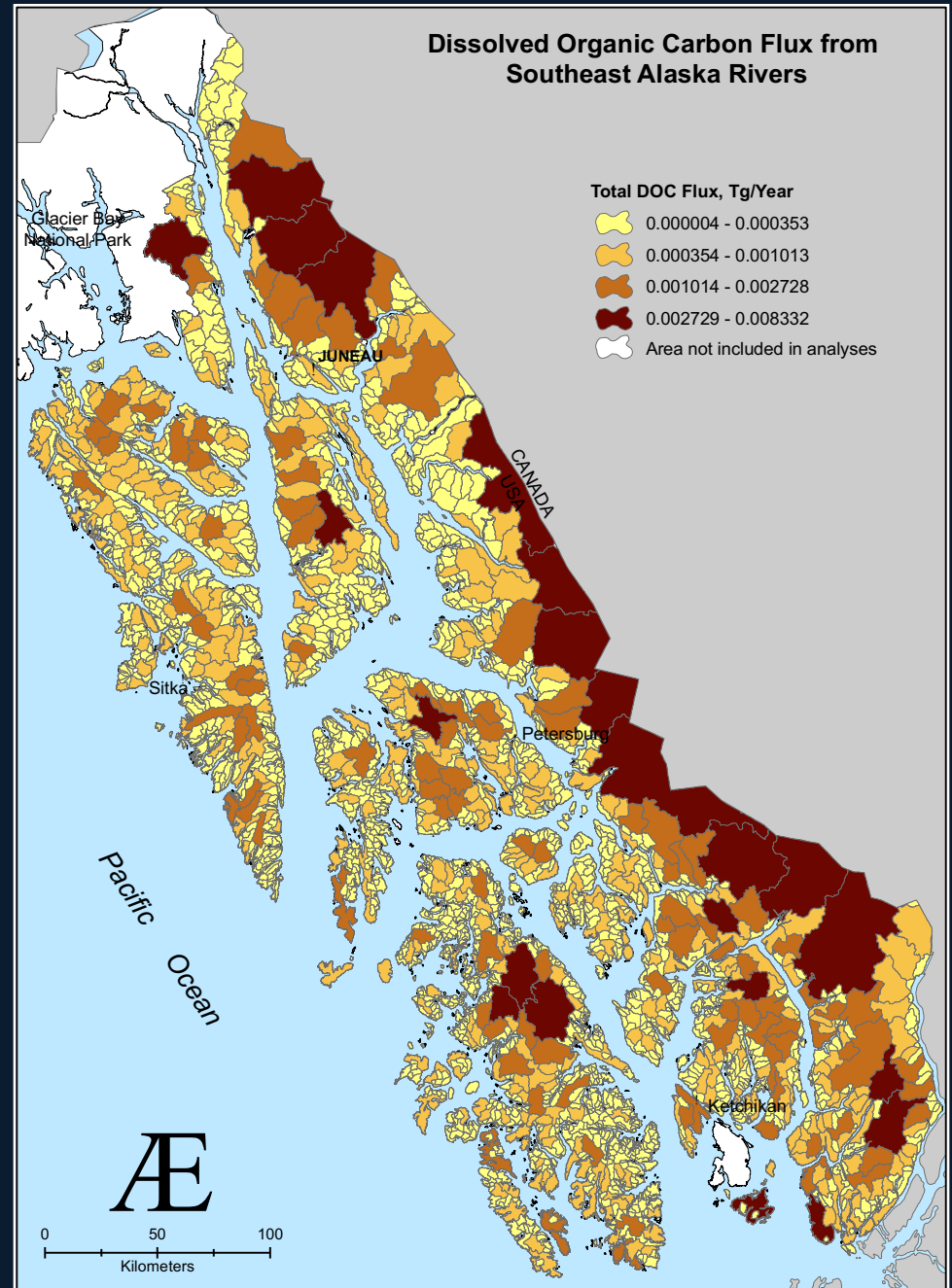
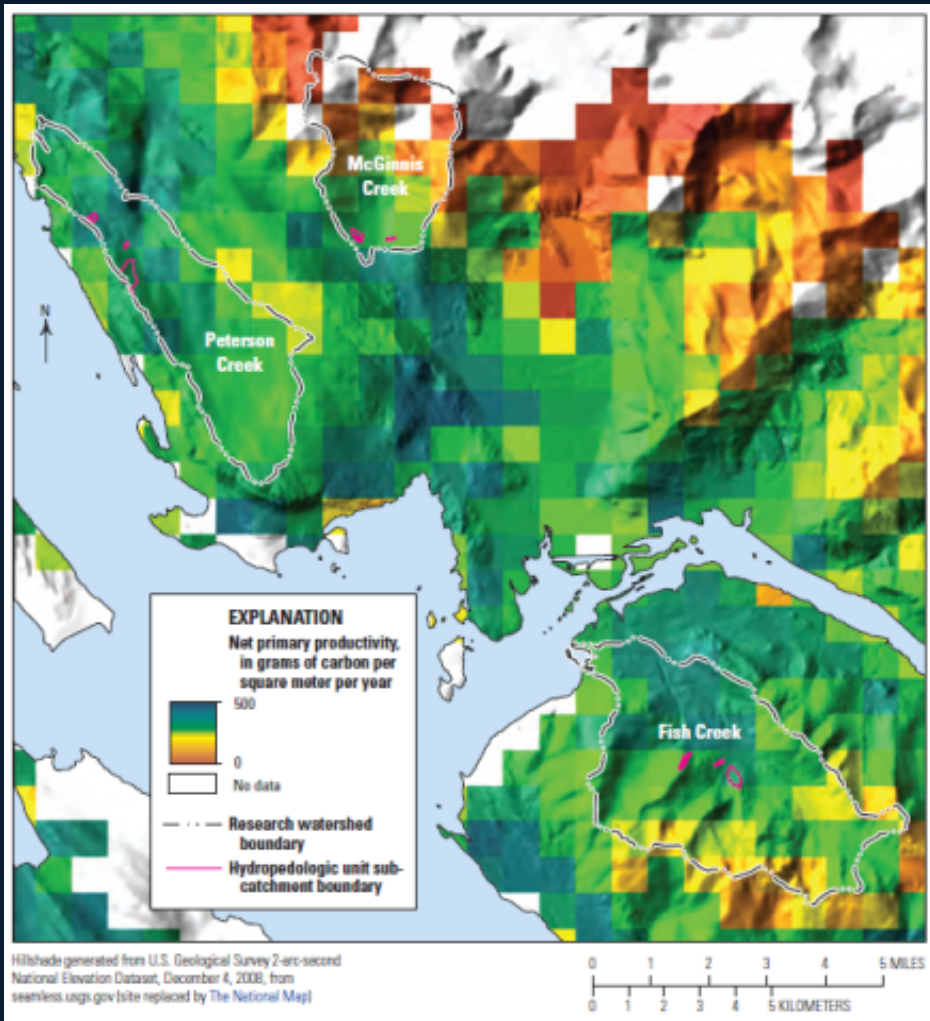
Climate scenario	Metric (percentile)	Historical period		Projection period		Change in number of wildfires (percent)	Change in area burned (percent)
		Number of wildfires	Area burned (km <sup>2</sup> )	Number of wildfires	Area burned (km <sup>2</sup> )		
<b>CGCM3.1</b>							
A1B	Median	42	2,274	45	2,295	5.9	0.9
A1B	95th	62	10,342	64	10,199	3.5	-1.4
A2	Median	42	2,194	44	3,239	7.2	47.6
A2	95th	63	10,459	66	16,626	5.3	59.0
B1	Median	42	2,216	48	2,622	15.5	18.3
B1	95th	62	10,511	67	7,855	7.3	-25.3
<b>ECHAM5</b>							
A1B	Median	42	2,200	40	3,174	-3.6	44.3
A1B	95th	63	10,426	62	12,217	-0.6	17.2
A2	Median	42	2,186	37	2,176	-10.8	-0.5
A2	95th	63	10,422	61	12,642	-3.1	21.3
B1	Median	42	2,230	38	1,798	-7.2	-19.4
B1	95th	63	10,264	57	8,090	-9.2	-21.2



# Projected Changes in Carbon Flux

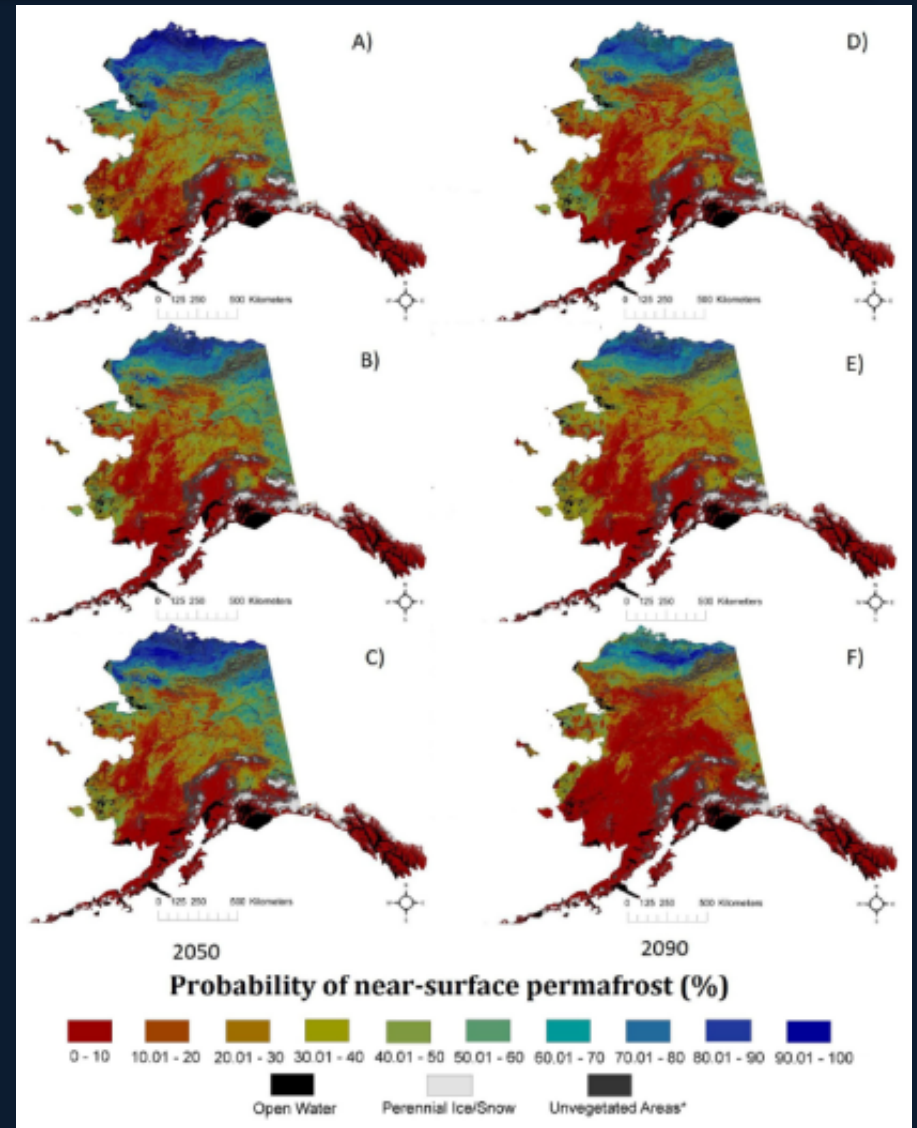
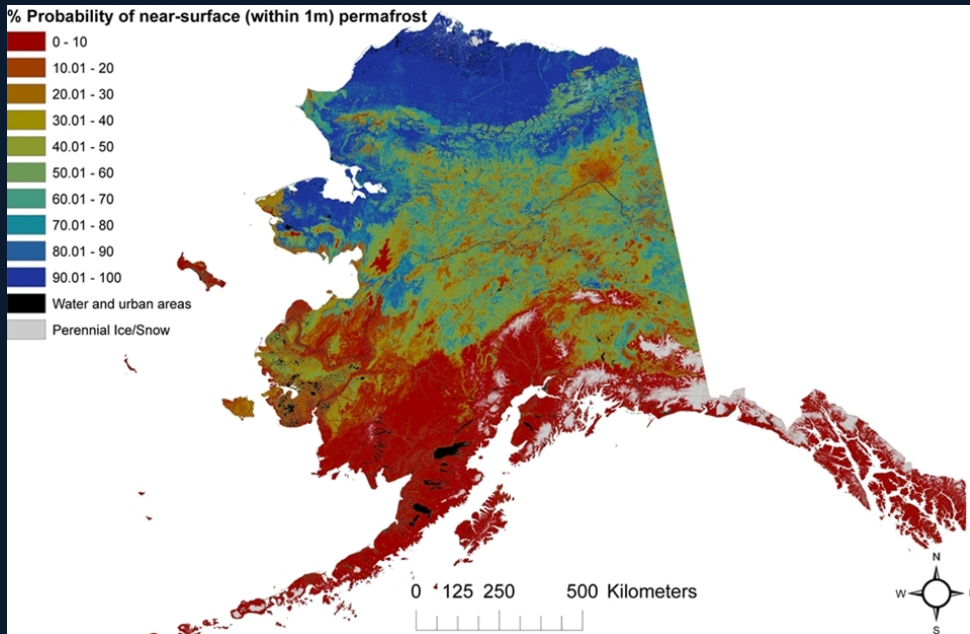


# Aquatic Carbon Transport

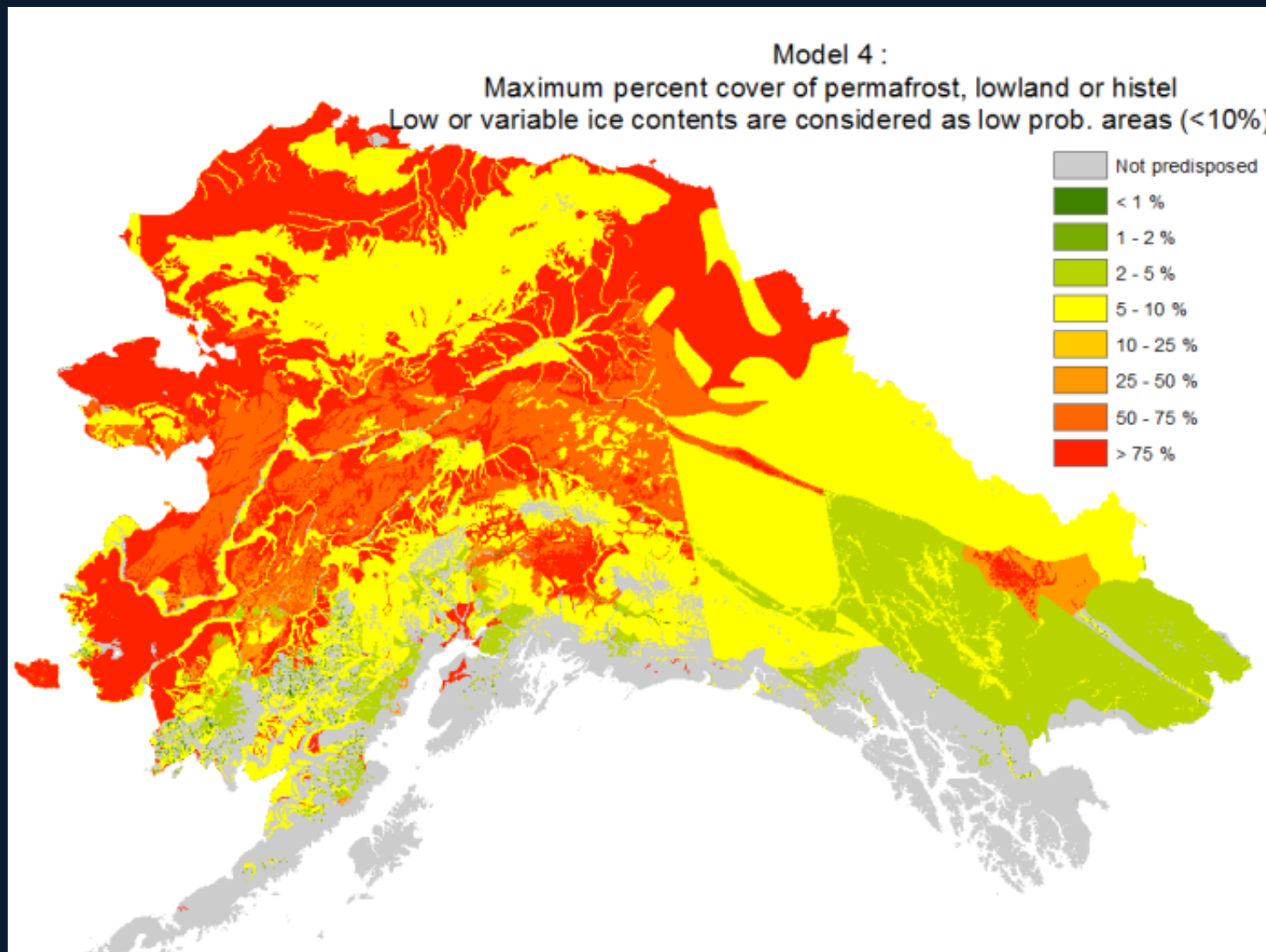




# Permafrost Mapping

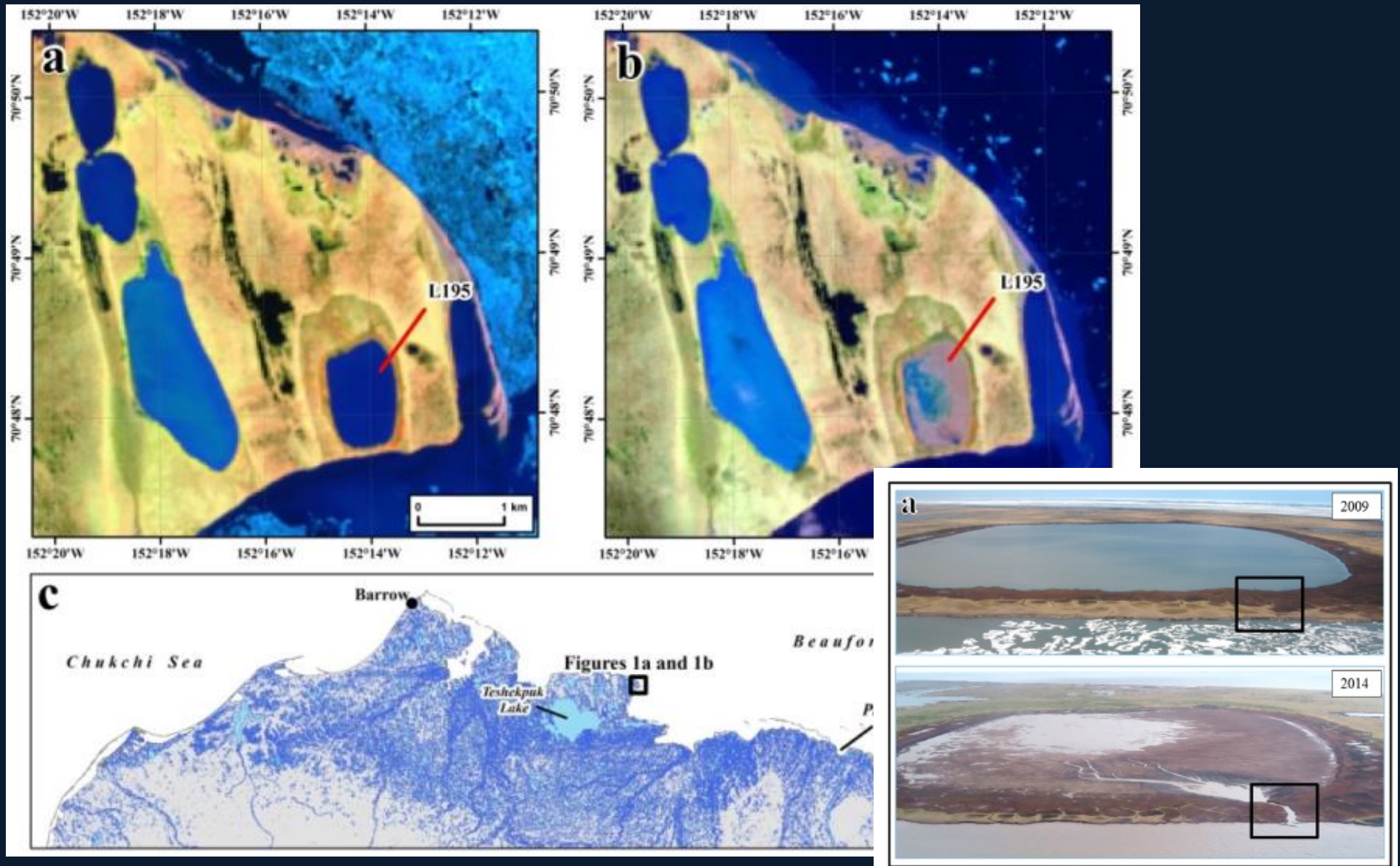


# Areas Predisposed to Thermokarst Disturbance

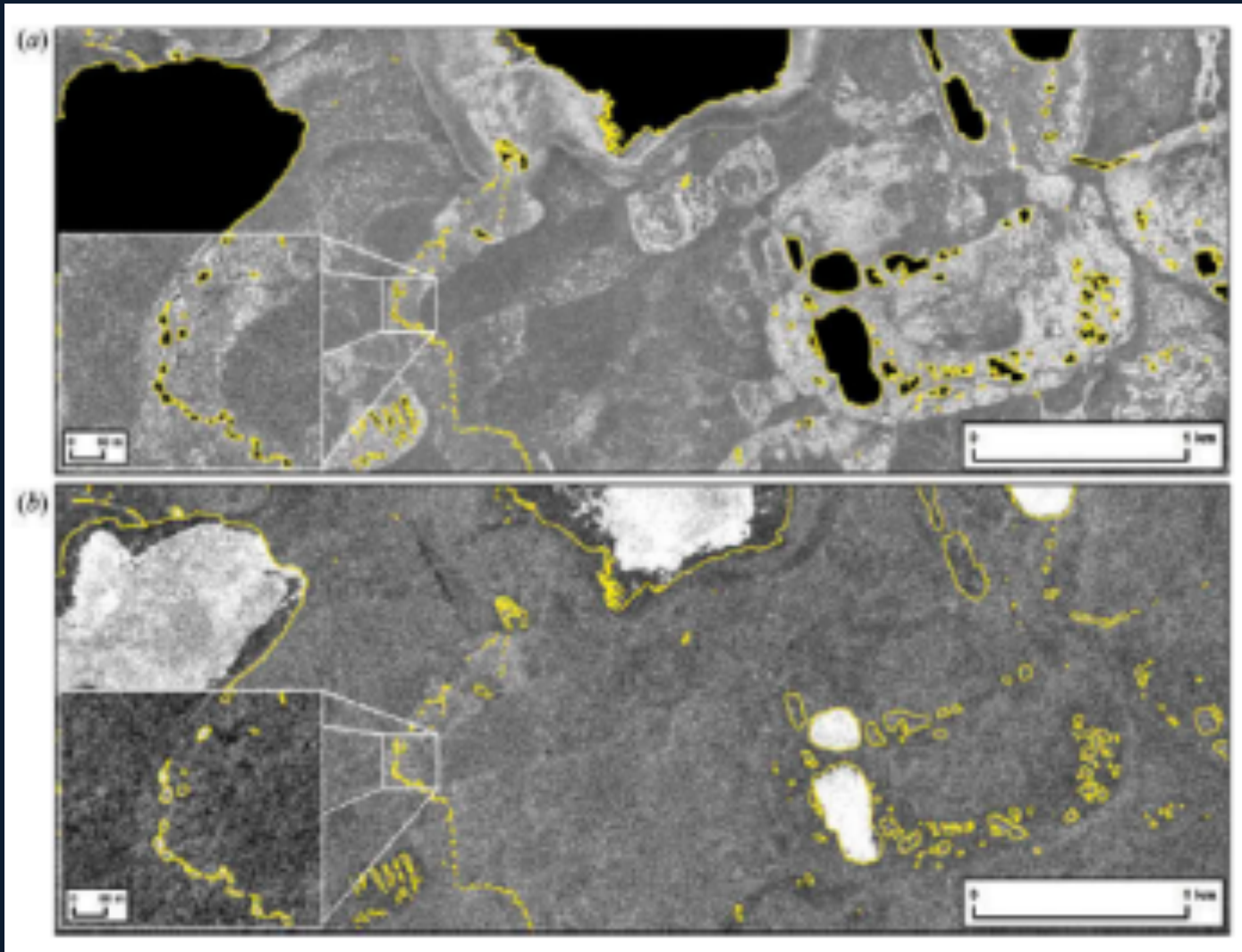




# Documenting an Arctic Lake Drainage Event

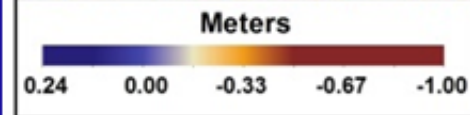
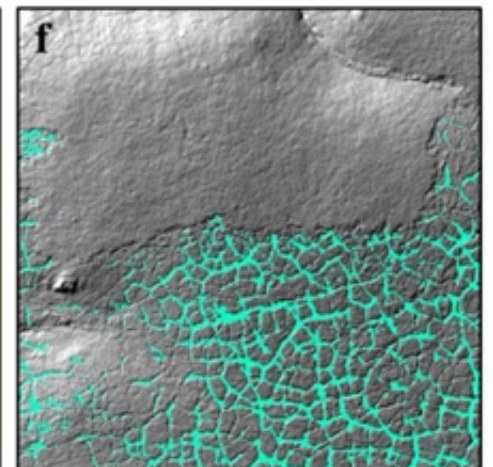
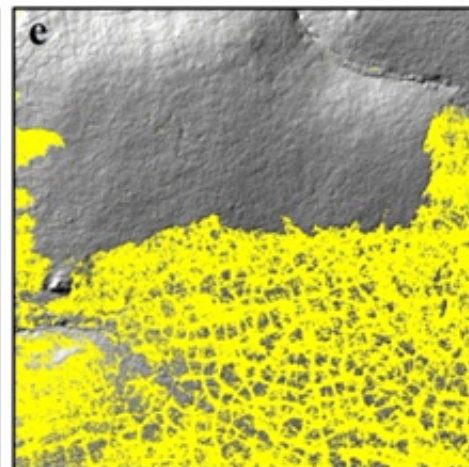
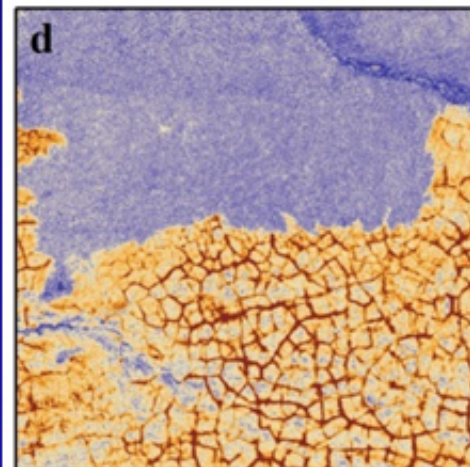
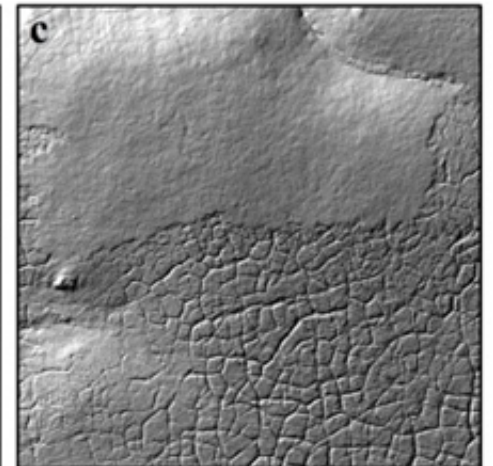
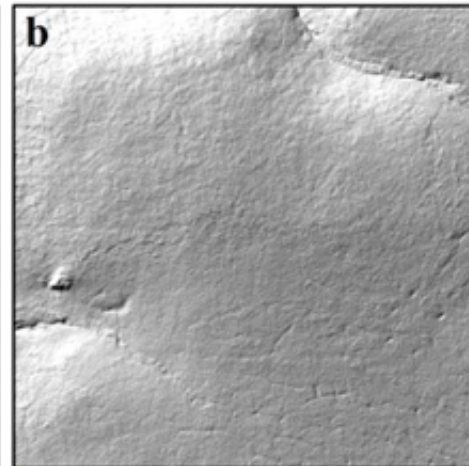
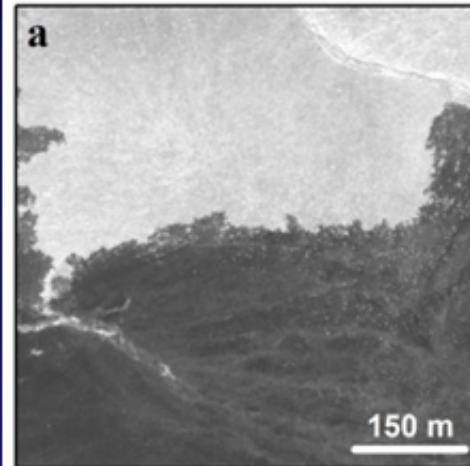
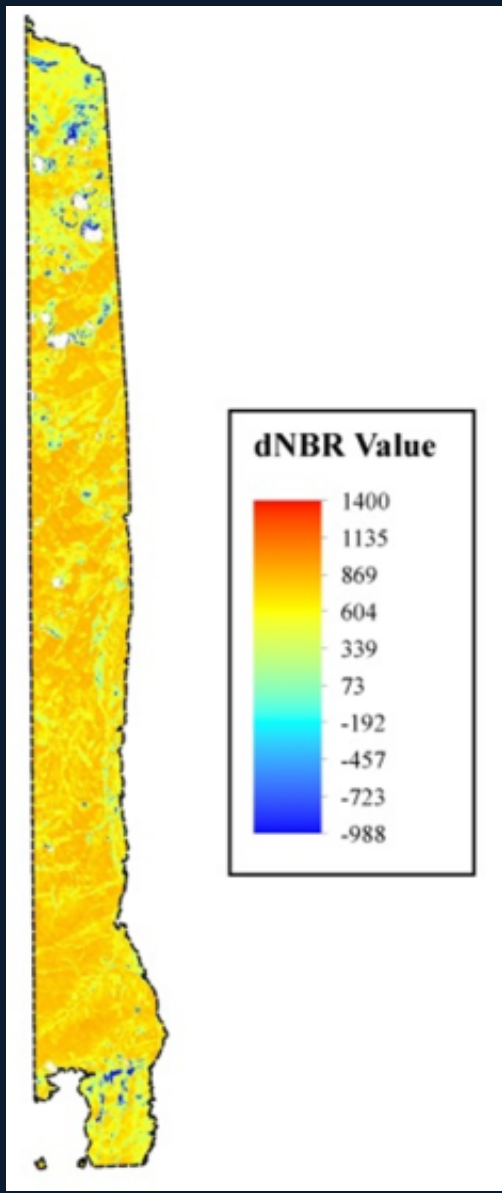



# TerraSAR-X and Ground Penetrating Radar Data Identify Winter Water






# LiDAR Documents Widespread Permafrost Thaw

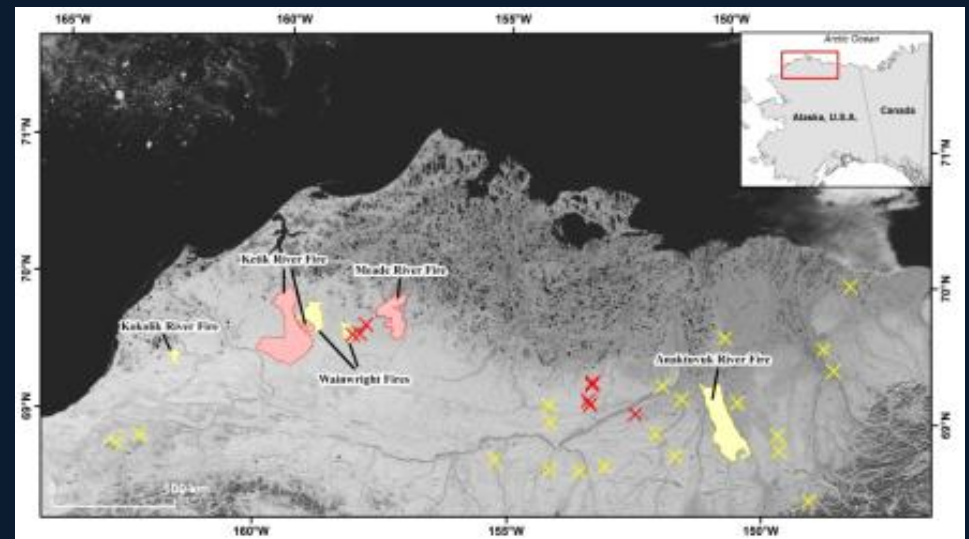
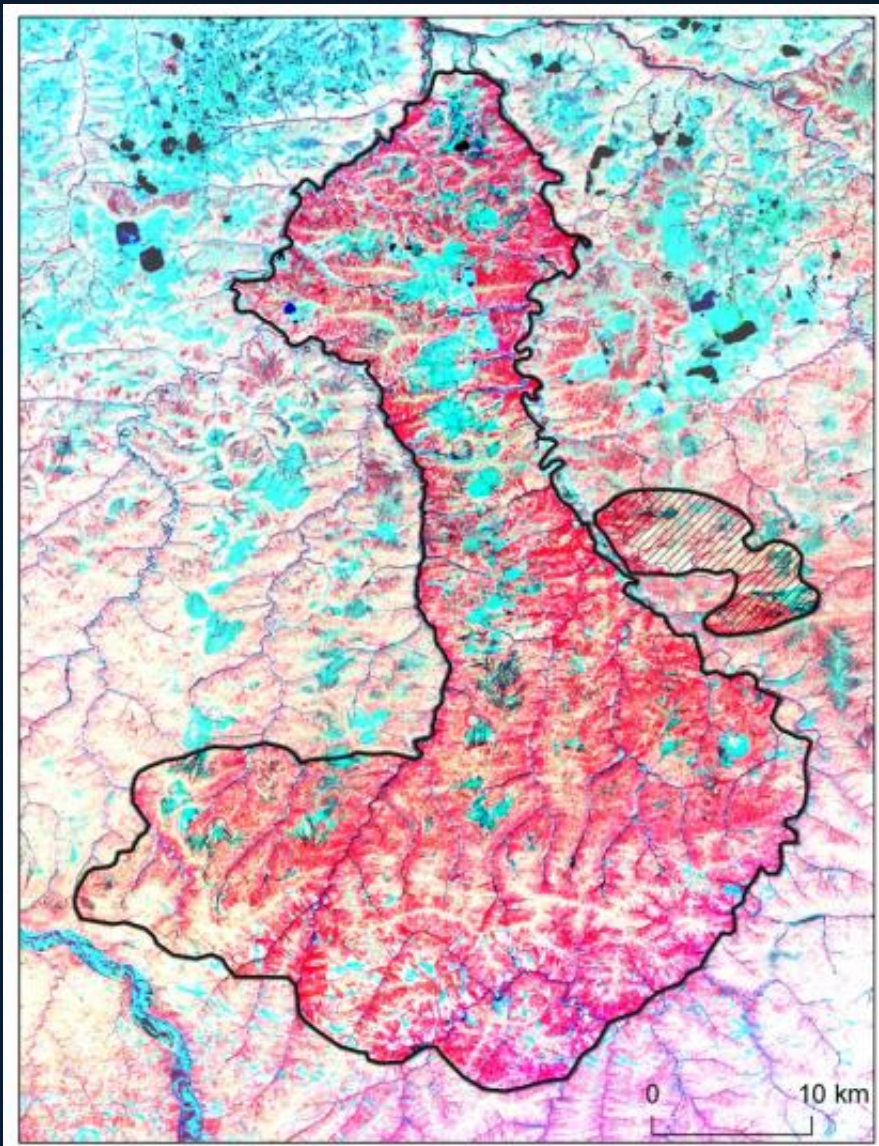


 FIS Prop. Error Threshold

 FIS 95% Prob. Threshold



# Monitoring Tundra Fires



# Risk and Vulnerability of Natural Hazards

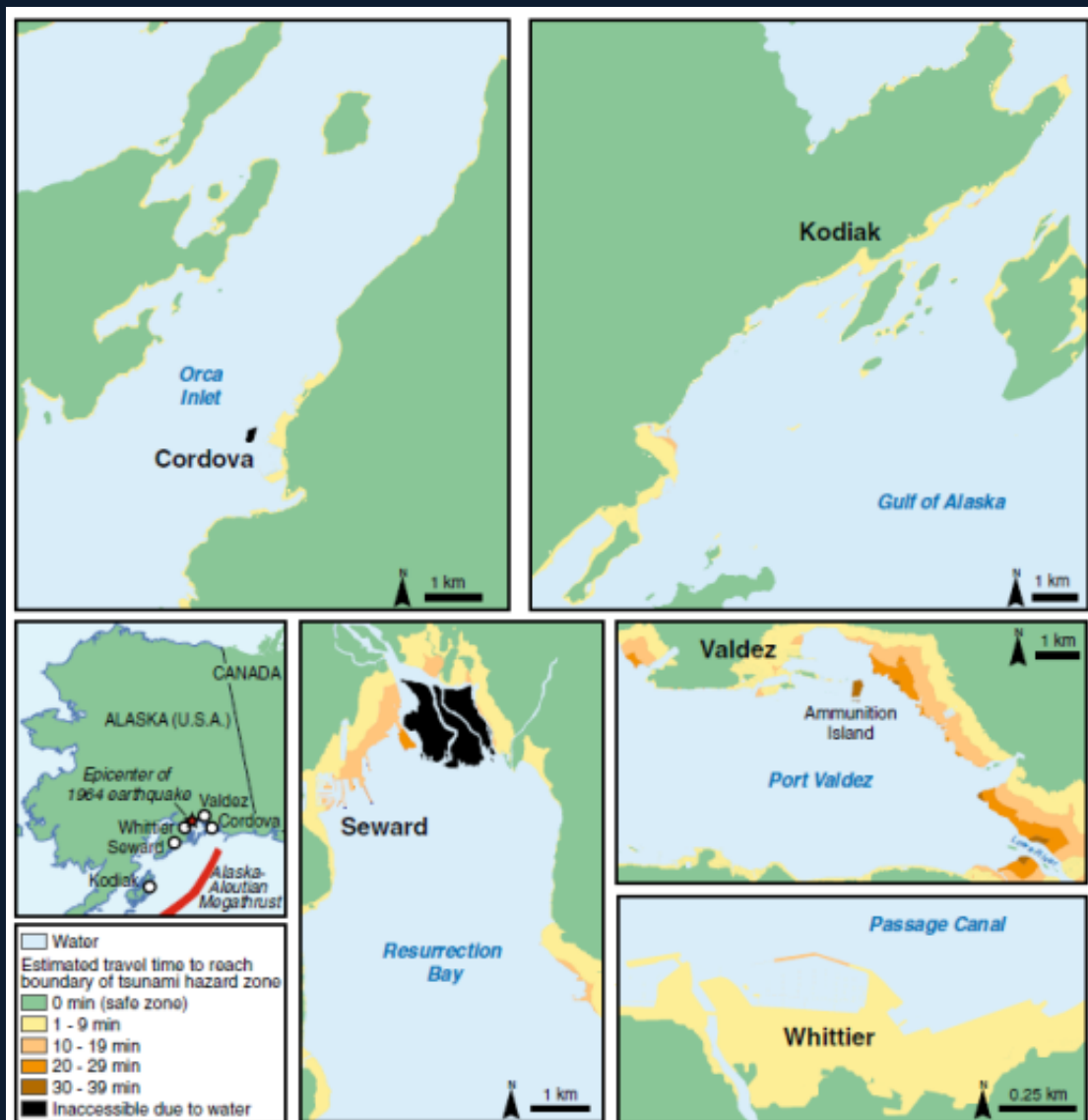
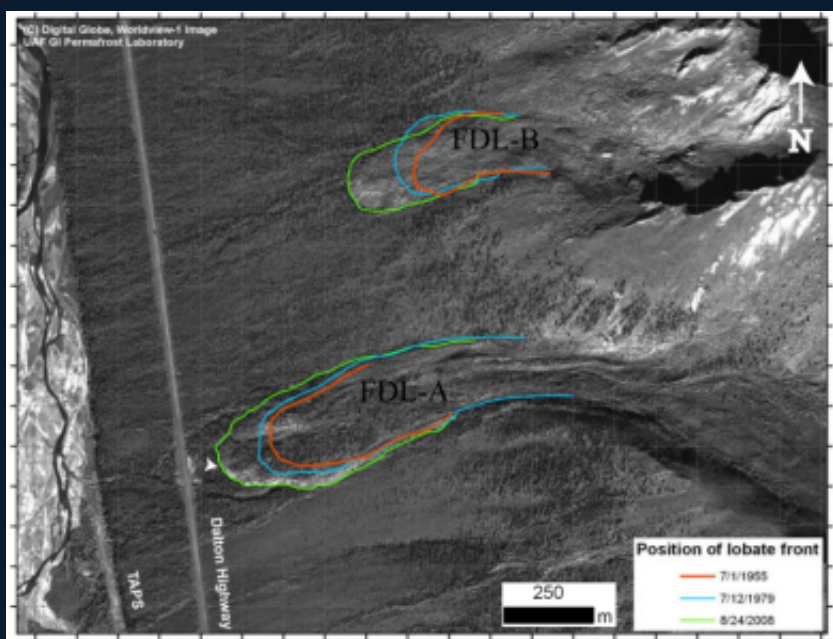


Fig. 1 Regional map showing community locations and maps of modeled pedestrian evacuation travel times in Cordova, Kodiak, Seward, Valdez, and Whittier (Alaska, USA) relative to maximum tsunami hazard zones and assuming a slow walking speed of 1.1 m/s. Map extents for each community vary considerably and are based on the extent of resident and employee locations within a community